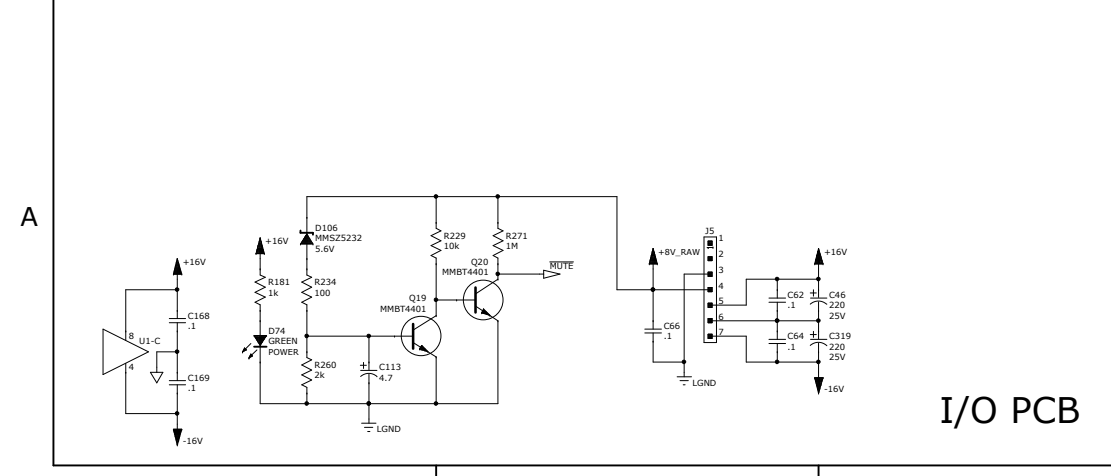
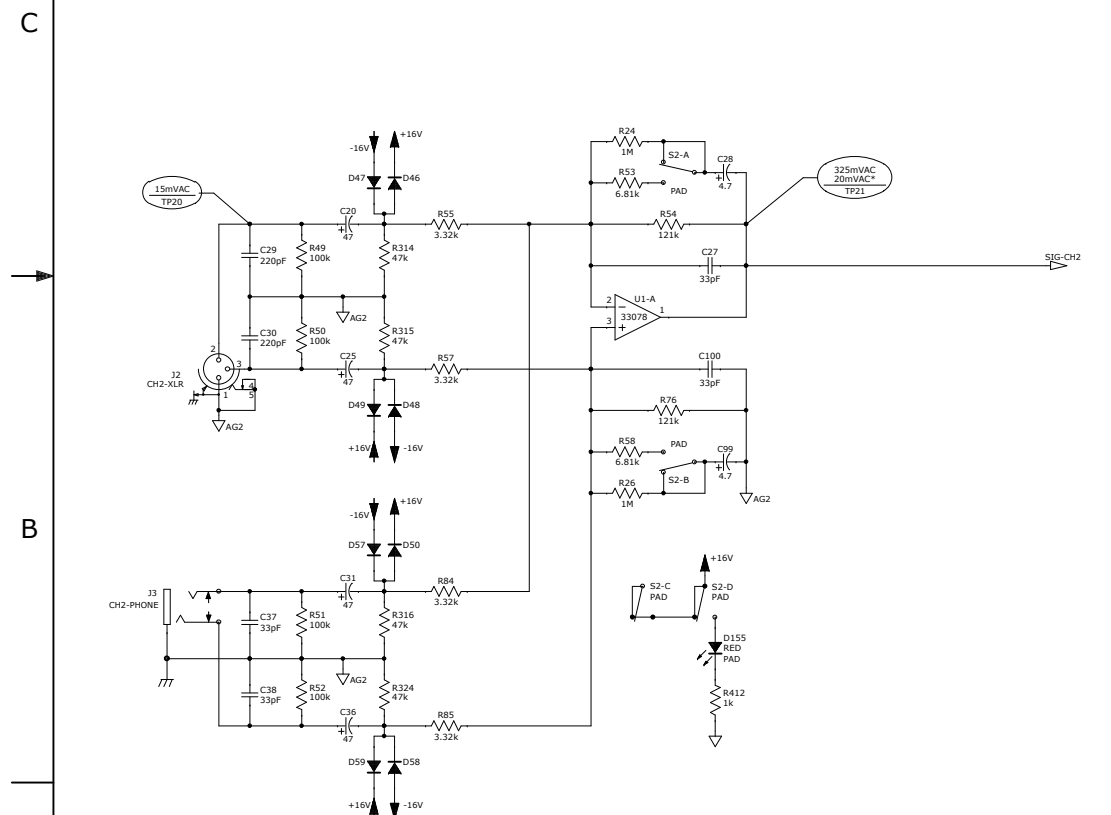
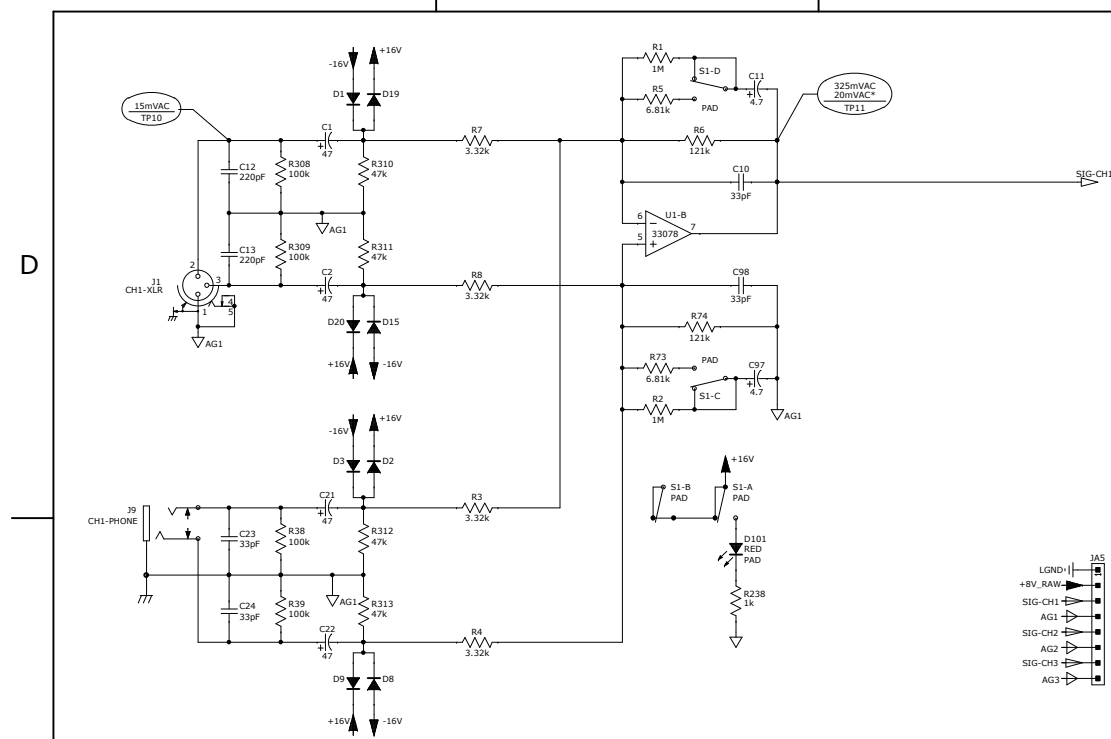
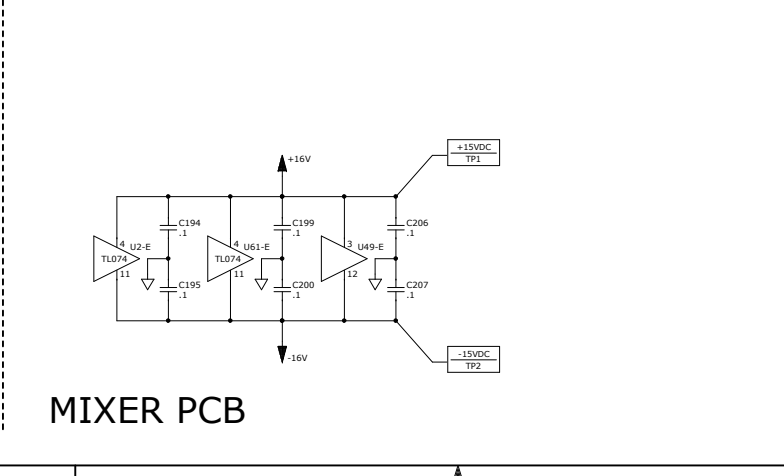
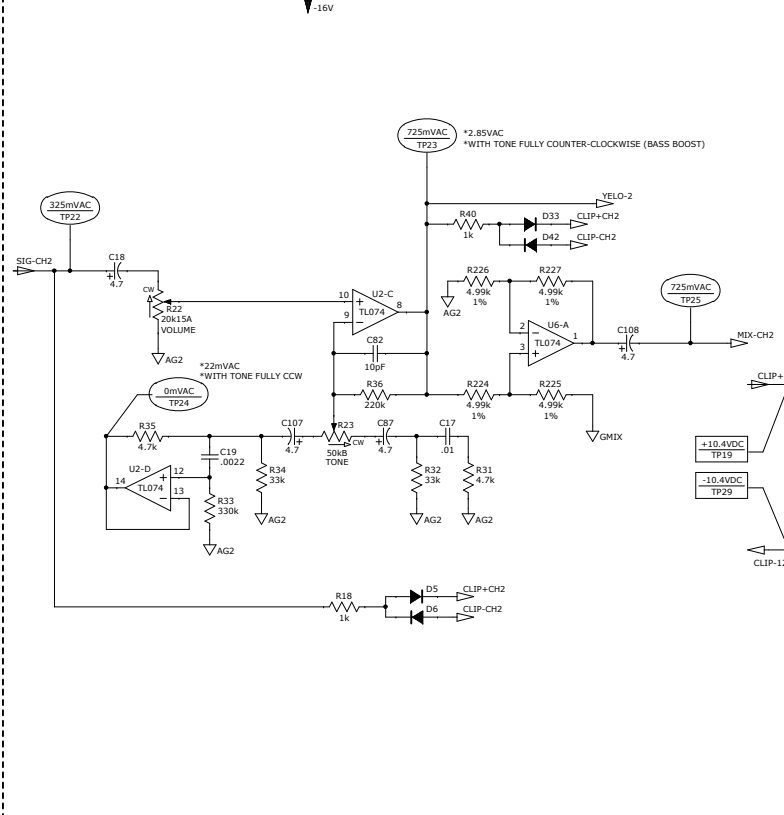
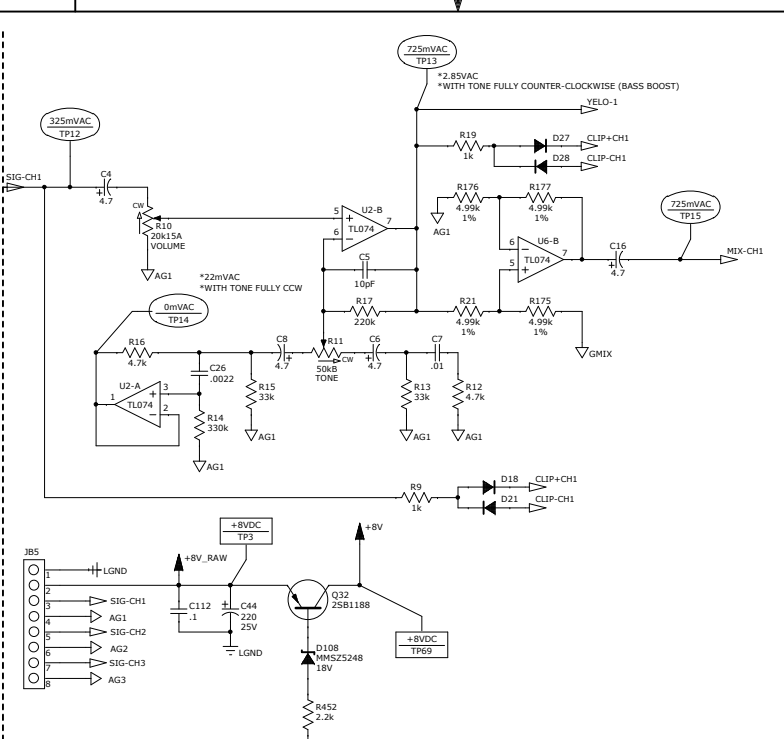


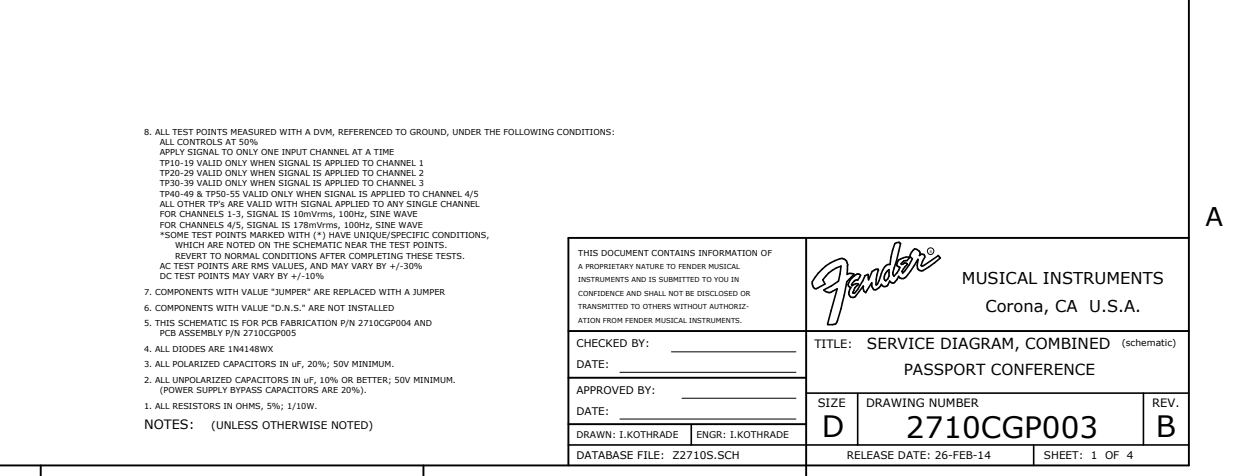
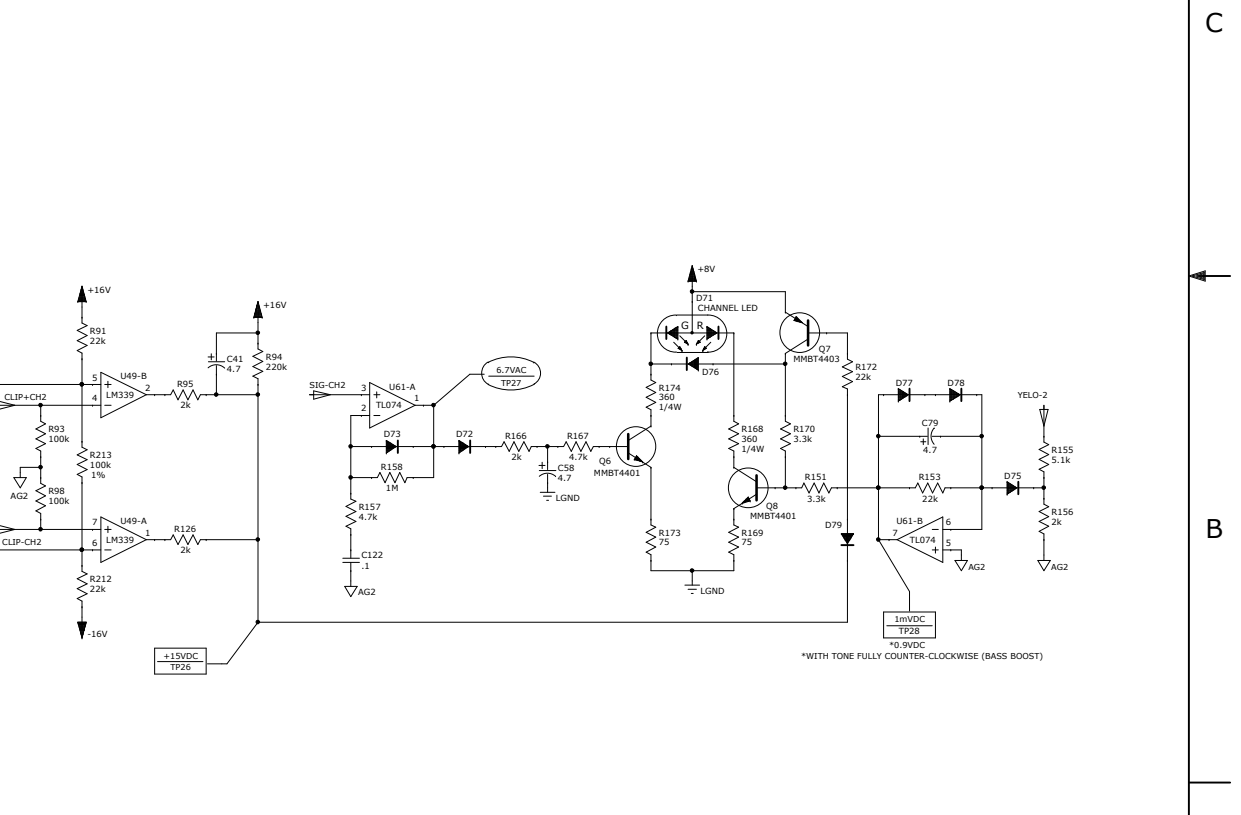
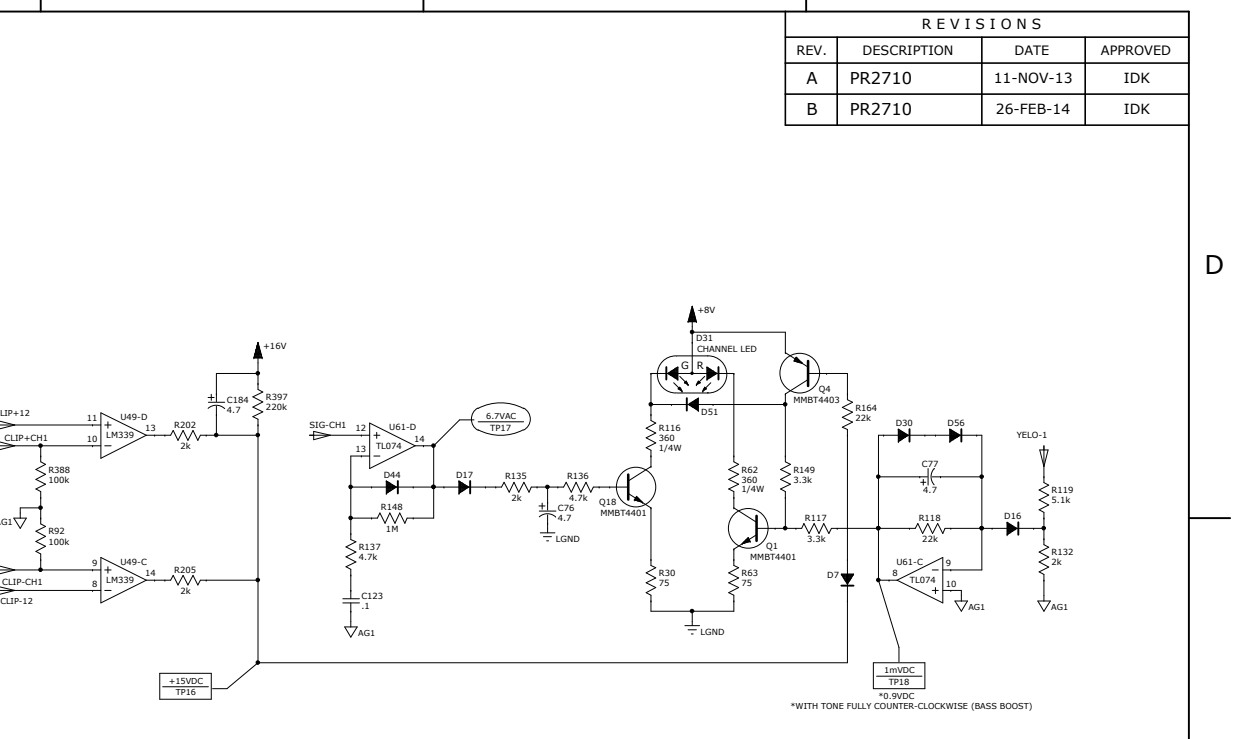
REVISIONS			
REV.	DESCRIPTION	DATE	APPROVED
A	PR2710	11-NOV-13	IDK
B	PR2710	26-FEB-14	IDK



I/O PCB



MIXER PCB



8. ALL TEST POINTS MEASURED WITH A DVM, REFERENCED TO GROUND, UNDER THE FOLLOWING CONDITIONS:
 ALL CONTROLS AT 50%
 APPLY SIGNAL TO ONLY ONE INPUT CHANNEL AT A TIME
 TP10-19 VALID ONLY WHEN SIGNAL IS APPLIED TO CHANNEL 1
 TP20-29 VALID ONLY WHEN SIGNAL IS APPLIED TO CHANNEL 2
 TP30-39 VALID ONLY WHEN SIGNAL IS APPLIED TO CHANNEL 3
 TP40-49 & TP50-55 VALID ONLY WHEN SIGNAL IS APPLIED TO CHANNEL 4/5
 ALL OTHER TPs ARE VALID WITH SIGNAL APPLIED TO ANY SINGLE CHANNEL
 FOR CHANNELS 1-3, SIGNAL IS 10mVrms, 100Hz, SINE WAVE
 FOR CHANNELS 4/5, SIGNAL IS 170mVrms, 100Hz, SINE WAVE
 SOME TEST POINTS MARKED WITH () HAVE UNIQUE/SPECIFIC CONDITIONS, WHICH ARE NOTED ON THE SCHEMATIC NEAR THE TEST POINTS.
 REVERT TO NORMAL CONDITIONS AFTER COMPLETING THESE TESTS.
 AC TEST POINTS ARE RMS VALUES, AND MAY VARY BY +/-30%.
 DC TEST POINTS MAY VARY BY +/-10%
 7. COMPONENTS WITH VALUE "JUMPER" ARE REPLACED WITH A JUMPER
 6. COMPONENTS WITH VALUE "D.N.S." ARE NOT INSTALLED
 5. THIS SCHEMATIC IS FOR PCB FABRICATION P/N 2710CGP004 AND PCB ASSEMBLY P/N 2710CGP005
 4. ALL DIODES ARE 1N4148W
 3. ALL POLARIZED CAPACITORS IN uF, 20%; 50V MINIMUM.
 2. ALL UNPOLARIZED CAPACITORS IN uF, 10% OR BETTER; 50V MINIMUM. (POWER SUPPLY BYPASS CAPACITORS ARE 20%).
 1. ALL RESISTORS IN OHMS, 5%; 1/10W
 NOTES: (UNLESS OTHERWISE NOTED)

THIS DOCUMENT CONTAINS INFORMATION OF A PROPRIETARY NATURE TO FENDER MUSICAL INSTRUMENTS AND IS SUBMITTED TO YOU IN CONFIDENCE AND SHALL NOT BE DISCLOSED OR TRANSMITTED TO OTHERS WITHOUT AUTHORIZATION FROM FENDER MUSICAL INSTRUMENTS.

Fender MUSICAL INSTRUMENTS
 Corona, CA U.S.A.

CHECKED BY: _____ TITLE: SERVICE DIAGRAM, COMBINED (schematic)
 DATE: _____ PASSPORT CONFERENCE

APPROVED BY: _____
 DATE: _____

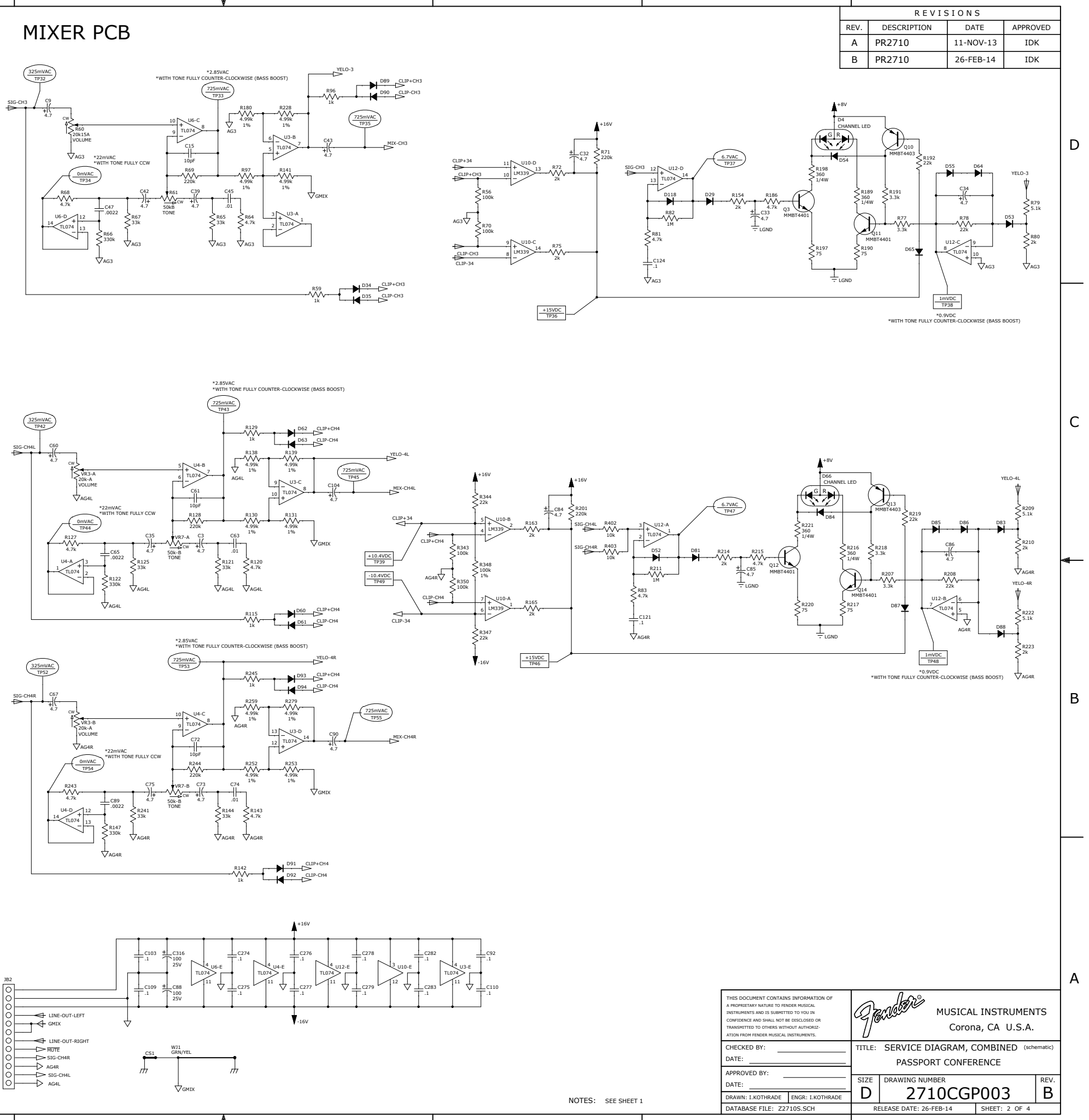
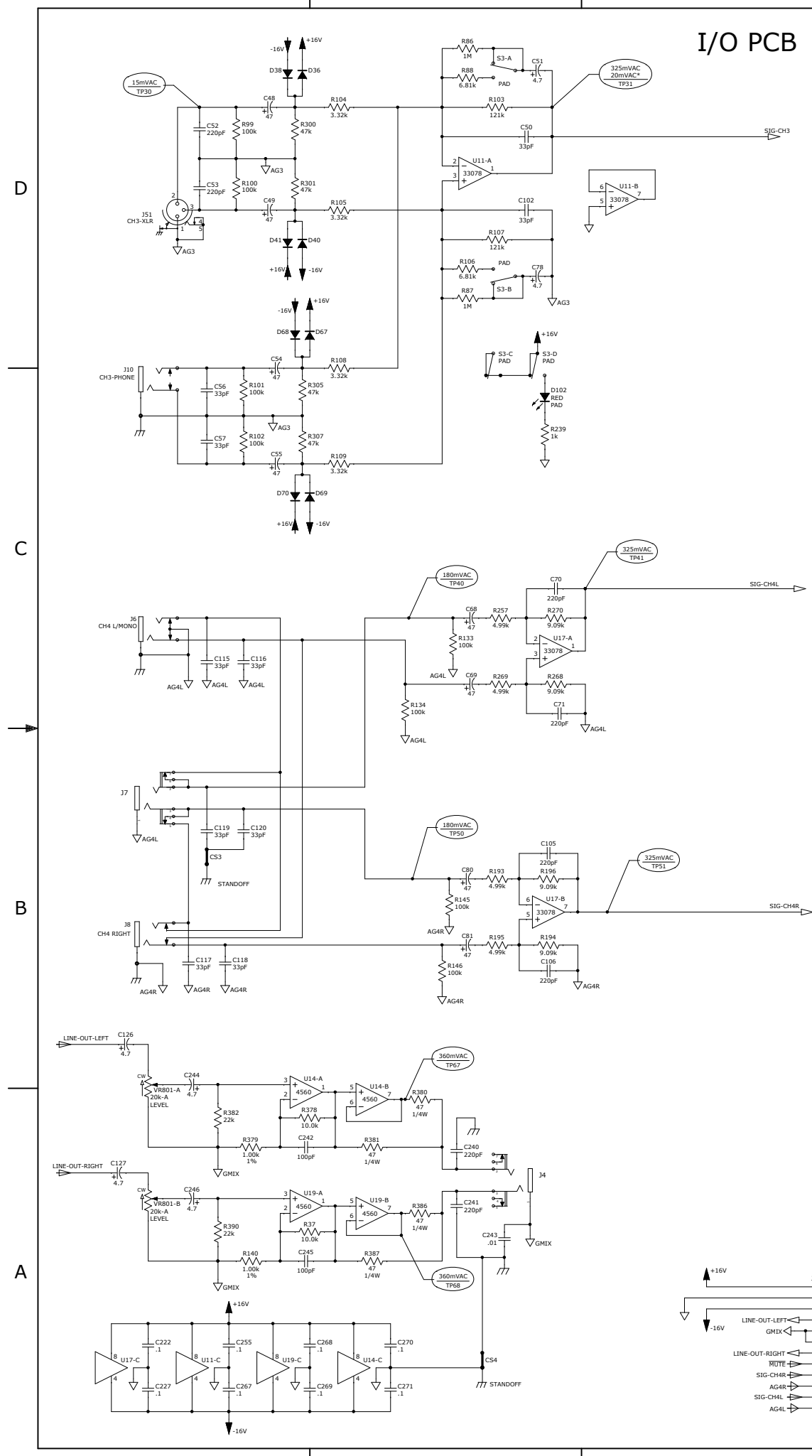
DRAWN: L.KOTHRAD ENGR: L.KOTHRAD

SIZE: D DRAWING NUMBER: 2710CGP003 REV. B
 DATABASE FILE: Z2710S.SCH RELEASE DATE: 26-FEB-14 SHEET: 1 OF 4

REVISIONS			
REV.	DESCRIPTION	DATE	APPROVED
A	PR2710	11-NOV-13	IDK
B	PR2710	26-FEB-14	IDK

I/O PCB

MIXER PCB



THIS DOCUMENT CONTAINS INFORMATION OF A PROPRIETARY NATURE TO FENDER MUSICAL INSTRUMENTS AND IS SUBMITTED TO YOU IN CONFIDENCE AND SHALL NOT BE DISCLOSED OR TRANSMITTED TO OTHERS WITHOUT AUTHORIZATION FROM FENDER MUSICAL INSTRUMENTS.

Fender MUSICAL INSTRUMENTS
Corona, CA U.S.A.

CHECKED BY: _____ TITLE: SERVICE DIAGRAM, COMBINED (schematic)
DATE: _____ PASSPORT CONFERENCE

APPROVED BY: _____ SIZE: DRAWING NUMBER
DATE: _____ 2710CGP003 REV. B

DRAWN: I.KOTHRAD ENGR: I.KOTHRAD
DATABASE FILE: Z2710S.SCH RELEASE DATE: 26-FEB-14 SHEET: 2 OF 4

NOTES: SEE SHEET 1

8

7

6

5

4

3

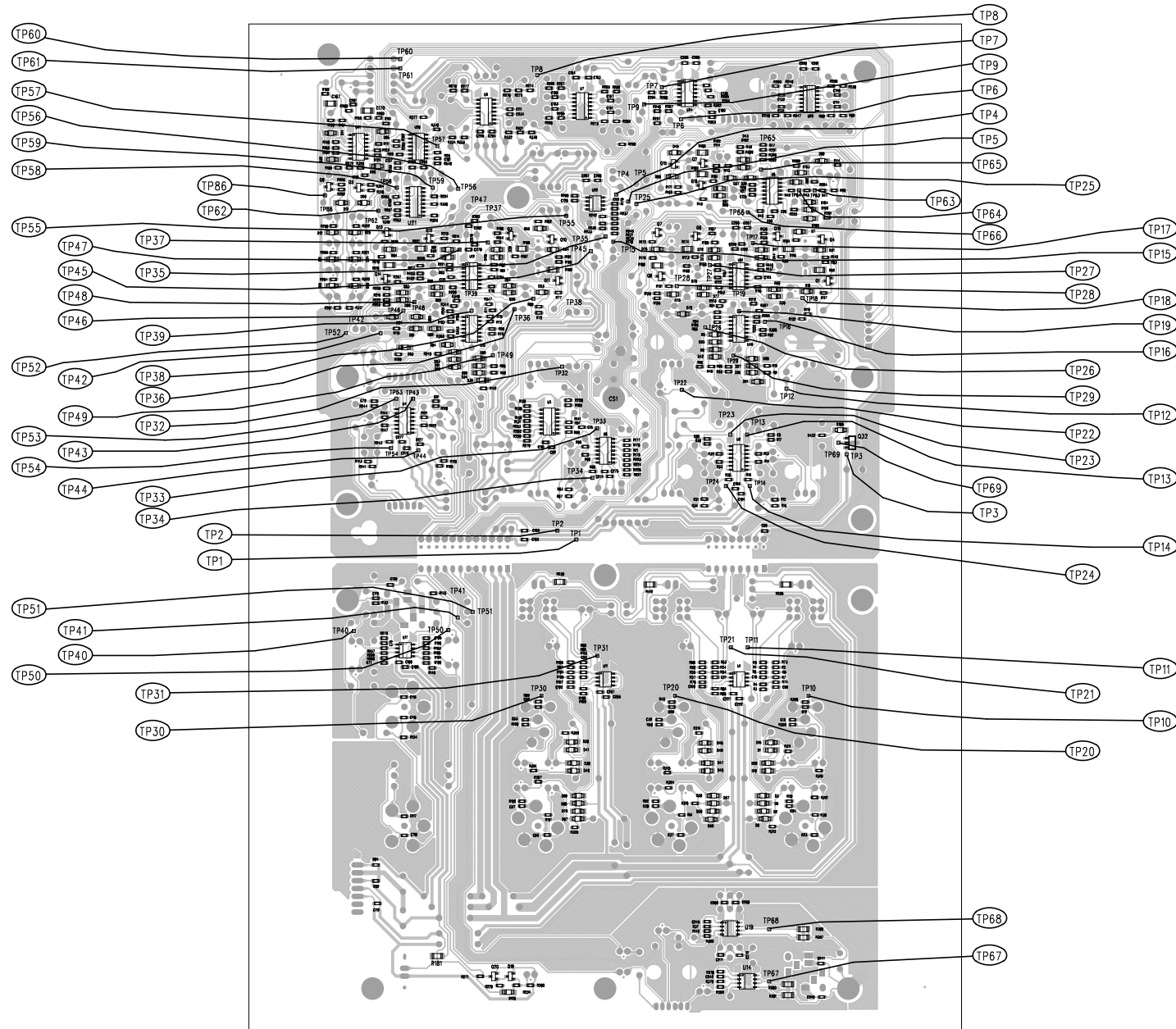
2

1

REVISIONS			
REV.	DESCRIPTION	DATE	APPROVED
A	PR 2710	08-NOV-13	I D K
B	PR 2710	26-FEB-14	I D K

D

D



C

C

B


B

A

A

SERVICE DIAGRAM
 ILM:DMG: DATE: 28-FEB-14
 DATABASE: Z2710P.PCB

NOTES: SEE SHEET 1 FOR TEST SETUP AND CONDITIONS
 (UNLESS OTHERWISE NOTED)

<small>THIS DOCUMENT CONTAINS INFORMATION OF A PROPRIETARY NATURE TO FENDER MUSICAL INSTRUMENTS AND IS SUBMITTED TO YOU IN CONFIDENCE AND SHALL NOT BE DISCLOSED OR TRANSMITTED TO OTHERS WITHOUT AUTHORIZATION FROM FENDER MUSICAL INSTRUMENTS.</small>		 MUSICAL INSTRUMENTS Corona, CA U.S.A.	
CHECKED BY: _____	DATE: _____	TITLE: SERVICE DIAGRAM, COMBINED (PCB Assy) PASSPORT CONFERENCE PCB ASSEMBLY	
APPROVED BY: _____	DATE: _____	SIZE: D DRAWING NUMBER: 2710CGP003	REV: B
DRAWN: LKOTHRAD	ENGR: LKOTHRAD	RELEASE DATE: 26-FEB-14	SHEET 4 OF 4
DATABASE FILE: Z2710P.PCB			

8

7

6

5

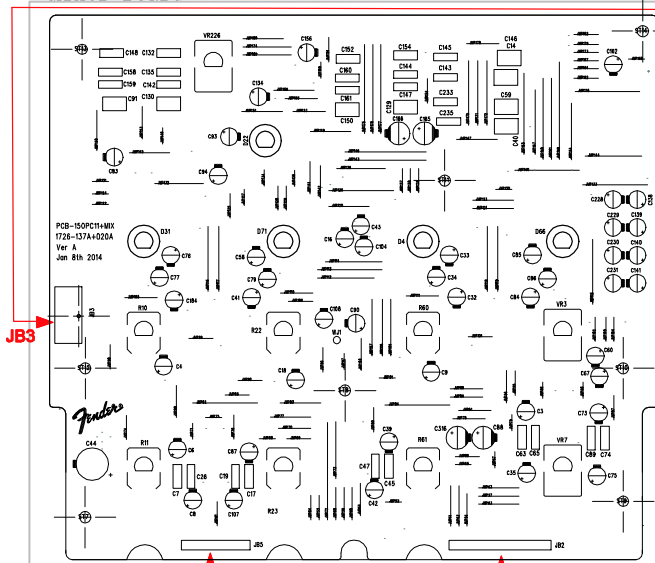
4

3

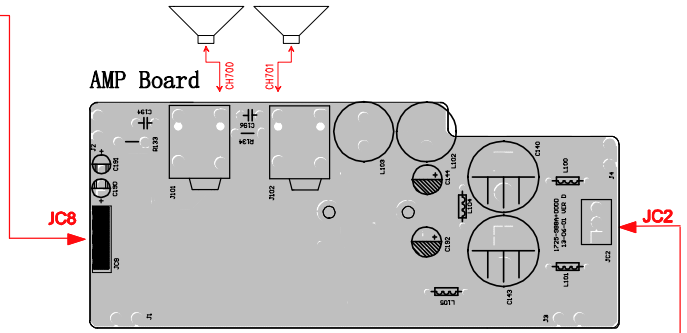
2

1

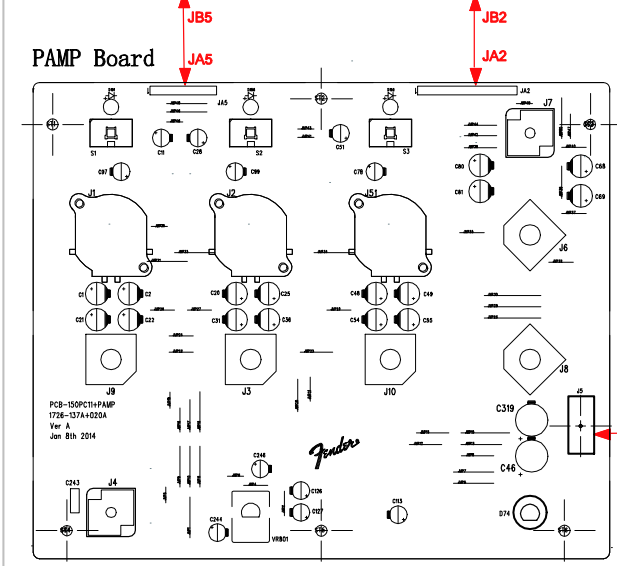
Mixer Board



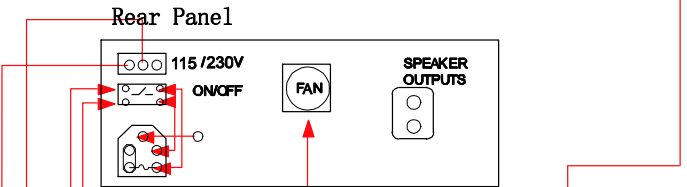
AMP Board



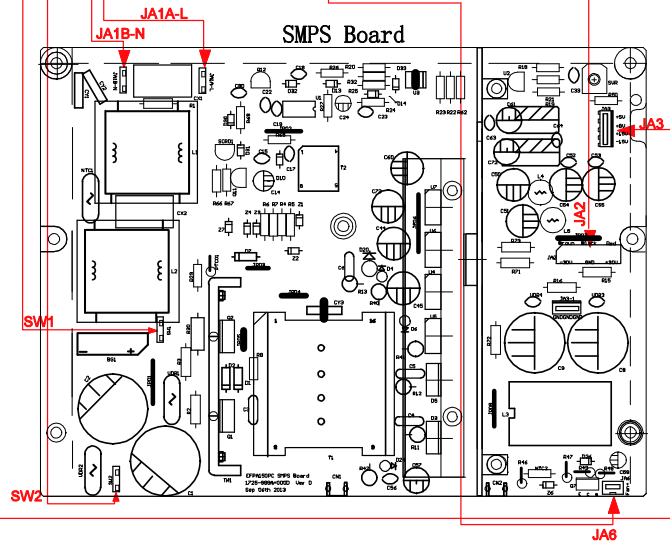
PAMP Board

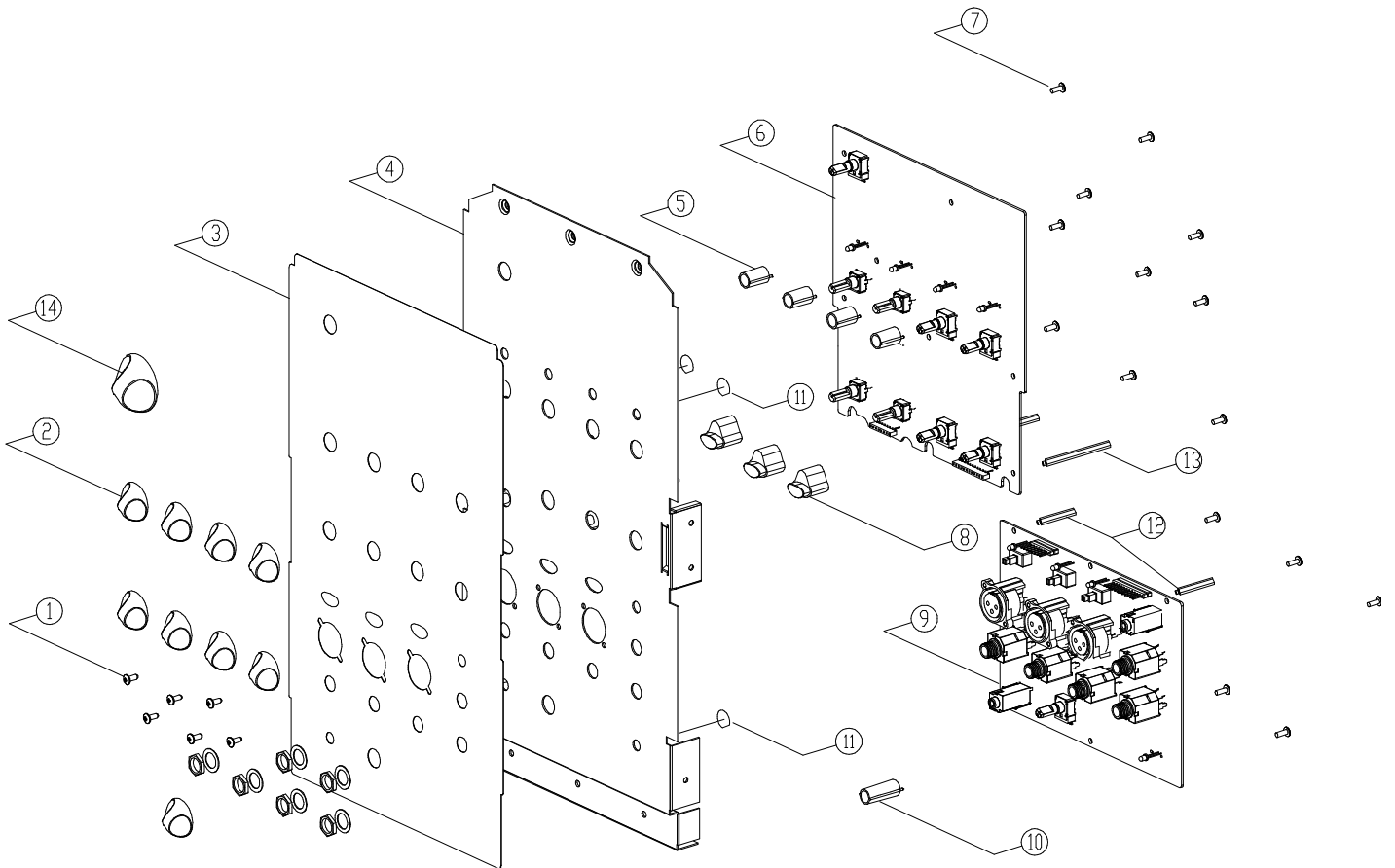


Rear Panel



SMPS Board

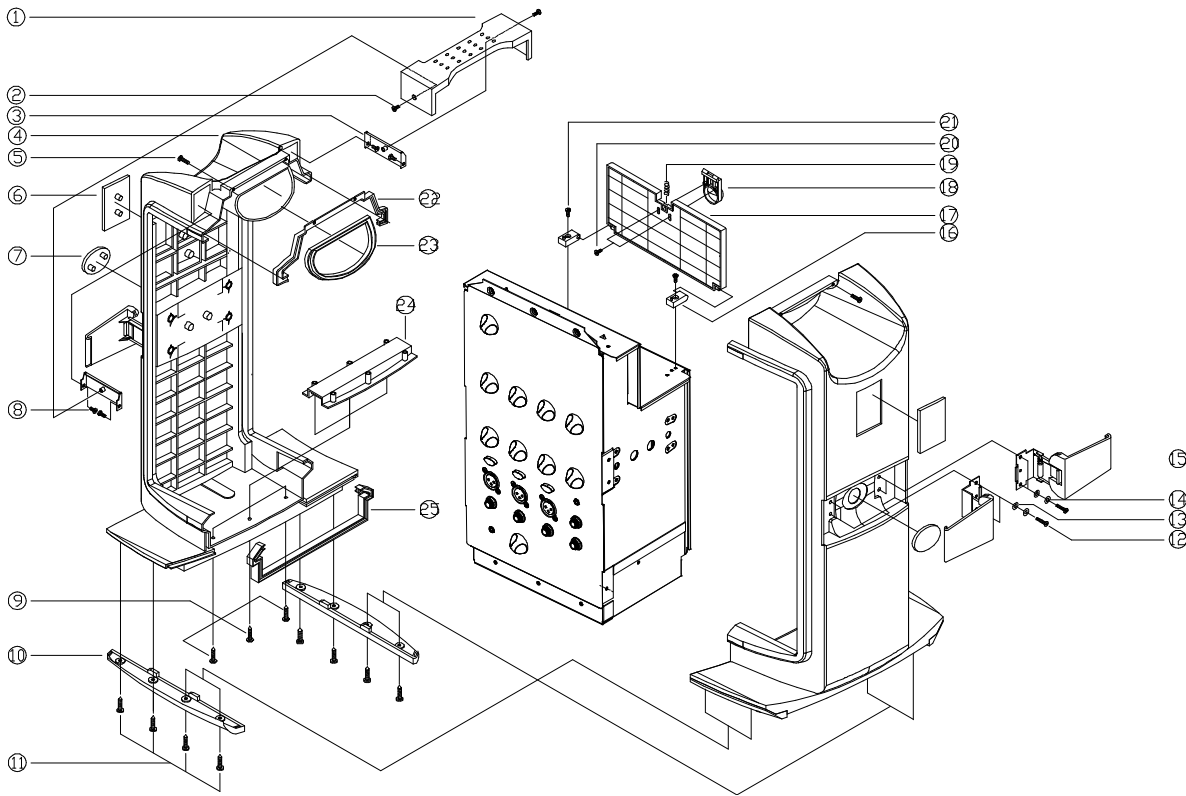




7706284000 Front Panel Ass'y Exploded View

NO.	PART NO.	DESCRIPTION	QTY
1	REF	SCREW B-TITE HEAD M3X8 BZ	6
2	0079944000	KNOB-SMALL 23.6X23.6X20.5 ABS	9
3	7706282000	PC SHEET FRONT ART FLIM	1
4	REF	PANEL-FRONT SECC	1
5	REF	LED HOLDER D10X15.6	5
6	7706288000	PCB ASSY PRE AMP	1
7	REF	SCREW M3X8	15
8	0079946000	RUBBER-KNOB PAD 14X18X20	3
9	7706287000	PCB ASSY INPUT	1
10	REF	HOLDER-LED D10X23.9 ABS	1
11	REF	DIFFUSE SHEET	6
12	REF	SHIELD PLTE2 M3X21.8	2
13	REF	SHIELD PLTE2 M3X30	2
14	0079945000	BIG KNOB ABS	1

Fender **PASSPORT**
Front Panel Ass'y Exploded View

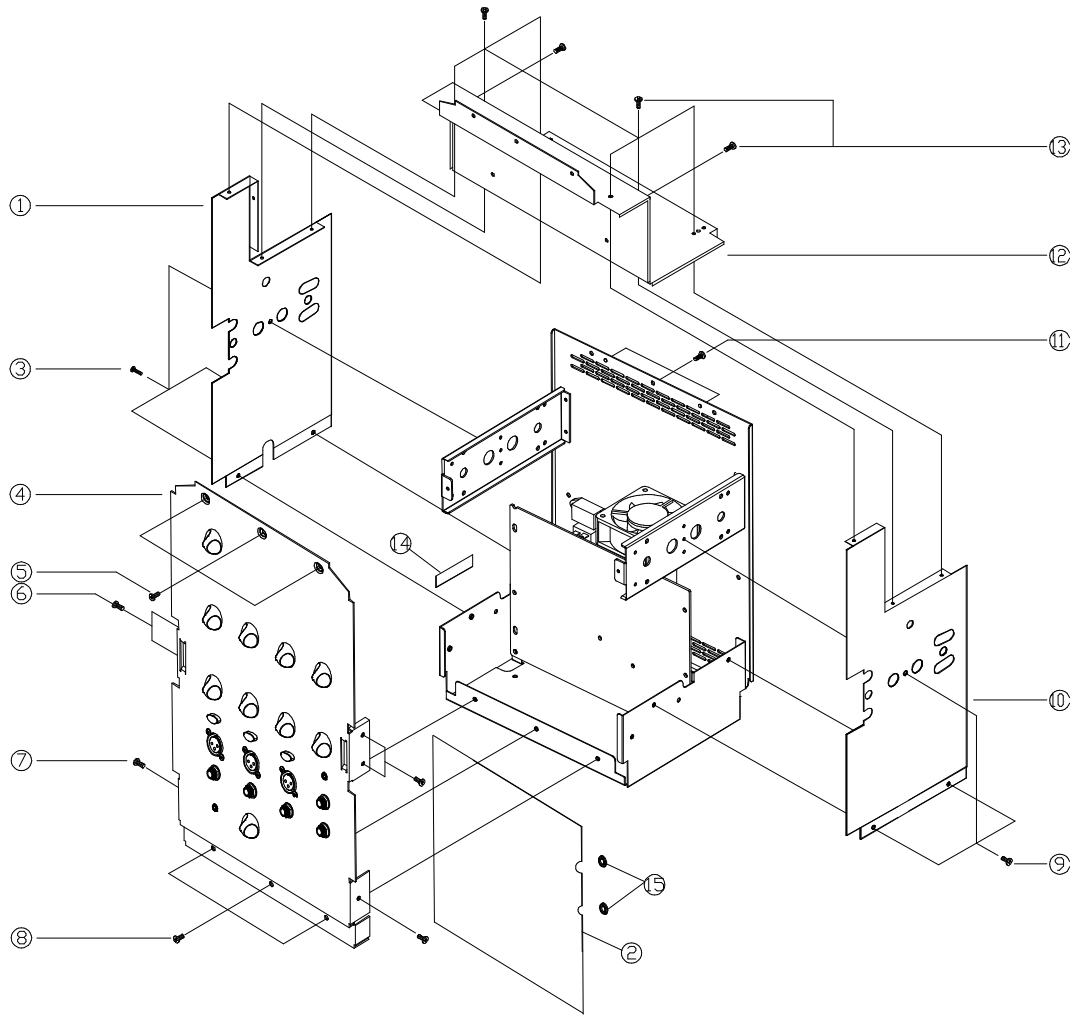


Main Unit Ass'y Exploded View – 1/4

NO.	PART NO.	DESCRIPTION	QTY	NO.	PART NO.	DESCRIPTION	QTY
1	0070241000	COVER-HANDLE	1	14	REF	WASHER METAL M4	8
2	REF	SCREW M3X5	2	15	0079983000	ASSY LATCH LOCKER	4
3	REF	HANDLE BKT	2	16	REF	HINGE	2
4	0070377000	CONSOLE MAIN	2	17	0079981000	DOOR	1
5	REF	SCREW 166.8MM	2	18	0079982000	LOCKER-DOOR	1
6	REF	BADGE-SPRUE CAP	2	19	REF	COMPRESSION SPRING	1
7	7706290000	BADGE-SPRUE CAP	2	20	REF	SCREW 2.6X6	2
8	REF	B-TITE 3X10MM	4	21	REF	S-TITE 3X8	2
9	REF	SCREW BIND M4X14	6	22	REF	GASKET TOP	1
10	REF	FOOT STAND	2	23	REF	GASKET HANDLE	1
11	REF	SCREW BH M4X 10	8	24	REF	SUPPORT RIB	1
12	REF	SCREW S-TITE 4X16	8	25	REF	GASKET BOTTOM	1
13	REF	SPRING WASHER M4	8				

Fender **PASSPORT**

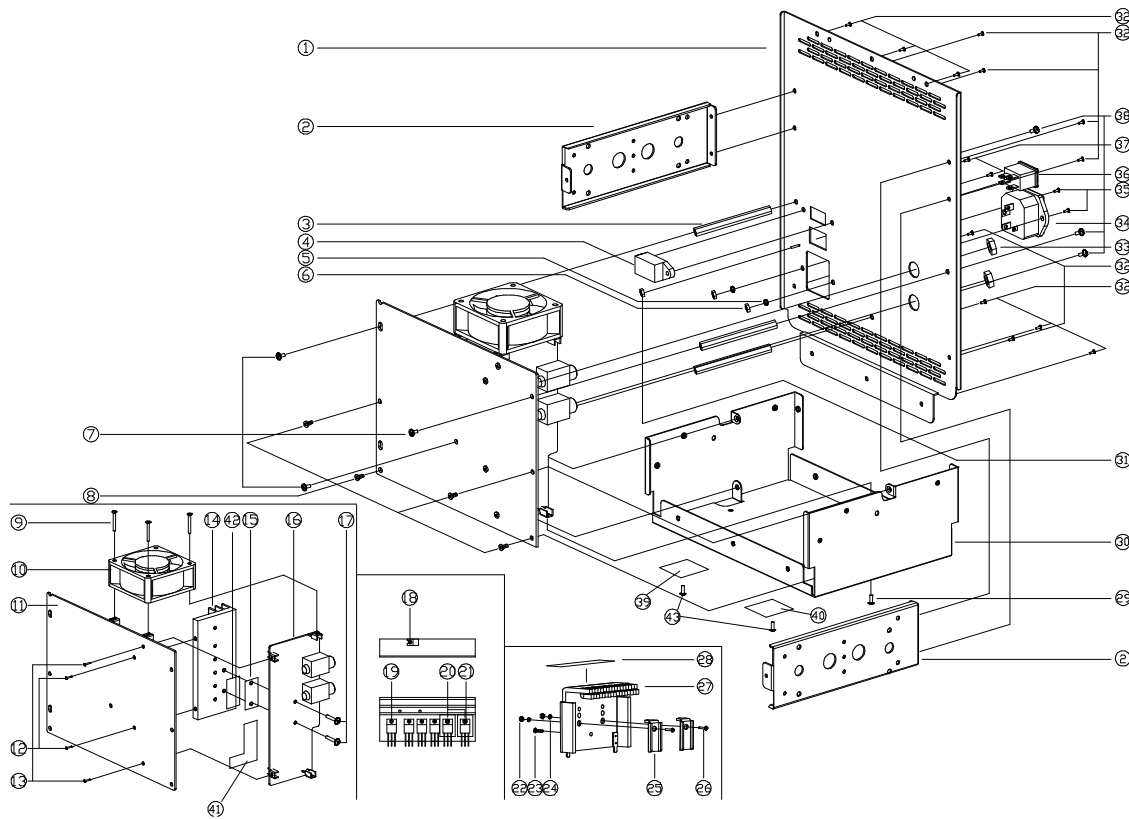
Main Unit Ass'y Exploded View - 1/4



Main Unit Ass'y Exploded View - 2/4

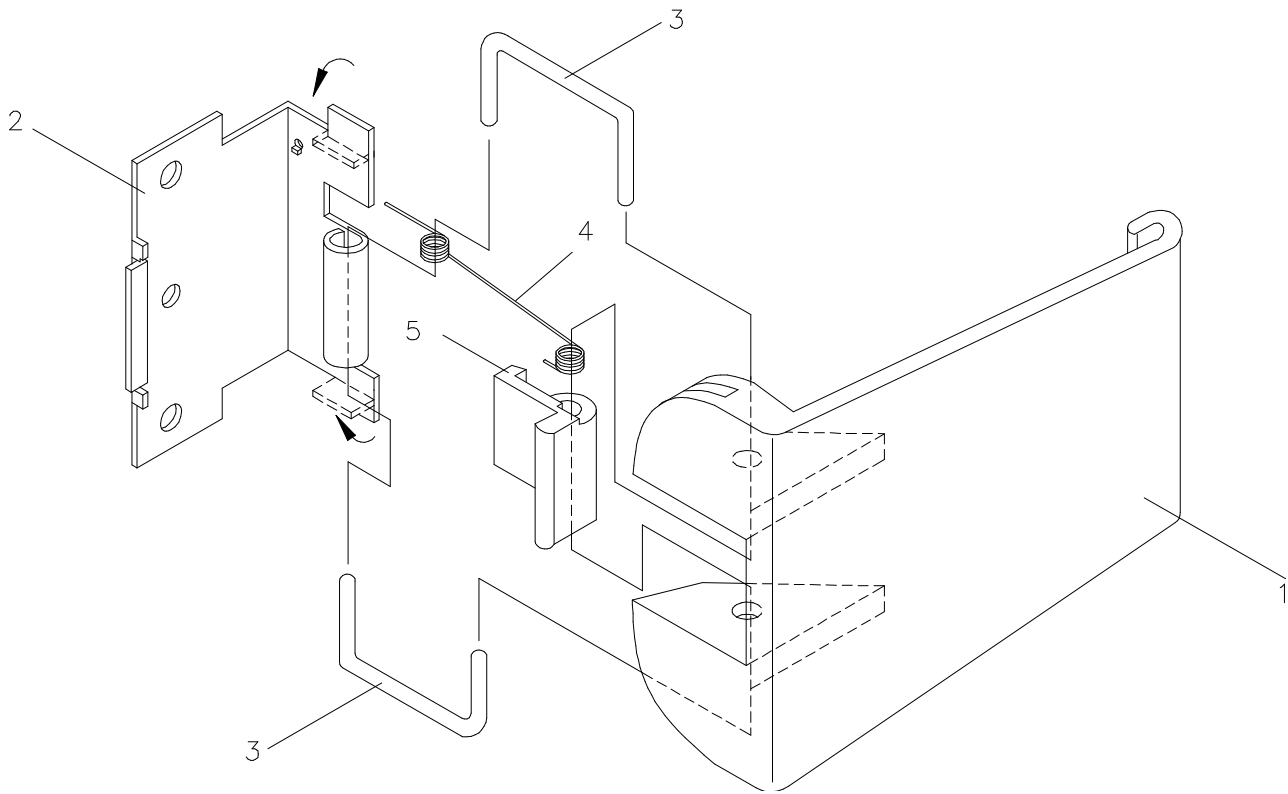
NO.	PART NO.	DESCRIPTION	QTY
1	REF	PLATE-SIDE	1
2	REF	SHIELD PLATE AMP	1
3	REF	SCREW D3X6 S-TITE	3
4	REF	FRONT PANEL ASSY	1
5	REF	SCREW D3X6 S-TITE	3
6	REF	SCREW D3X6 S-TITE	2
7	REF	SCREW D3X6 S-TITE	2
8	REF	SCREW D3X6 S-TITE	3
9	REF	SCREW D3X6 S-TITE	3
10	REF	SIDE PLATE-B	1
11	REF	SCREW D3X6 S-TITE	3
12	REF	COVER-TOP	1
13	REF	TTS SCREW M2.6x8	8
14	REF	FIBRE SHEET	1
15	REF	PLASTIC BUSHING	1

Fender **PASSPORT**
Main Unit Ass'y Exploded View - 2/4



Main Unit Ass'y Exploded View - 3/4

NO.	PART NO.	DESCRIPTION	QTY	NO.	PART NO.	DESCRIPTION	QTY
1	REF	PANEL-REAR SECC	1	23	REF	SCREW BIND M3X6	1
2	REF	MTG. BKT	2	24	REF	WASHER SPRING	2
3	REF	SPINDLE M3X6	3	25	REF	IC PRESSURE BKT	2
4	0074484000	SWITCH AC SELECTOR	1	26	REF	SCREW BH M3X 14	2
5	REF	WASHER SPRING	2	27	REF	TRA HEAT SINK	1
6	REF	M3 NUT NI	2	28	REF	WARNING LABEL	1
7	REF	SCREW M3X8	3	29	REF	MS SCREW M3X6	1
8	REF	SCREW BH M3X6	4	30	REF	COVER-BOTTOM	1
9	REF	SCREW MACH M3X30	3	31	REF	NUT HEX M4	1
10	0079969000	FAN DC 24V	1	32	REF	S-TITE 3X8	9
11	7706289000	PCB ASSY POWER	1	33	REF	NUT PLASTIC	2
12	REF	MS SCREW M3X8	2	34	0079950000	AC INLET SOCKET	1
13	REF	MS SCREW M3X6	2	35	REF	M3X8 C'SINK	2
14	REF	HEATSINK SMPS	1	36	0079954000	SWITCH POWER	1
15	REF	INSULATION SHEET	1	37	REF	S-TITE 3X8	2
16	7706286000	PCB ASSY AMP	1	39	REF	FIBER SHEET	1
17	REF	SCREW M3X12	2	40	REF	FIBER SHEET	1
18	REF	MS SCREW M3X6	1	41	REF	INSULATION SHEET	1
19	REF	0SCREW BH M3X10	6	42	REF	INSULATION SHEET AL	1
20	REF	MICA T-400	2			OXIDE	
21	REF	BUSHING TO-220A	2	43	REF	SCREW M3*8	2
22	REF	M3 NUT NI	2				



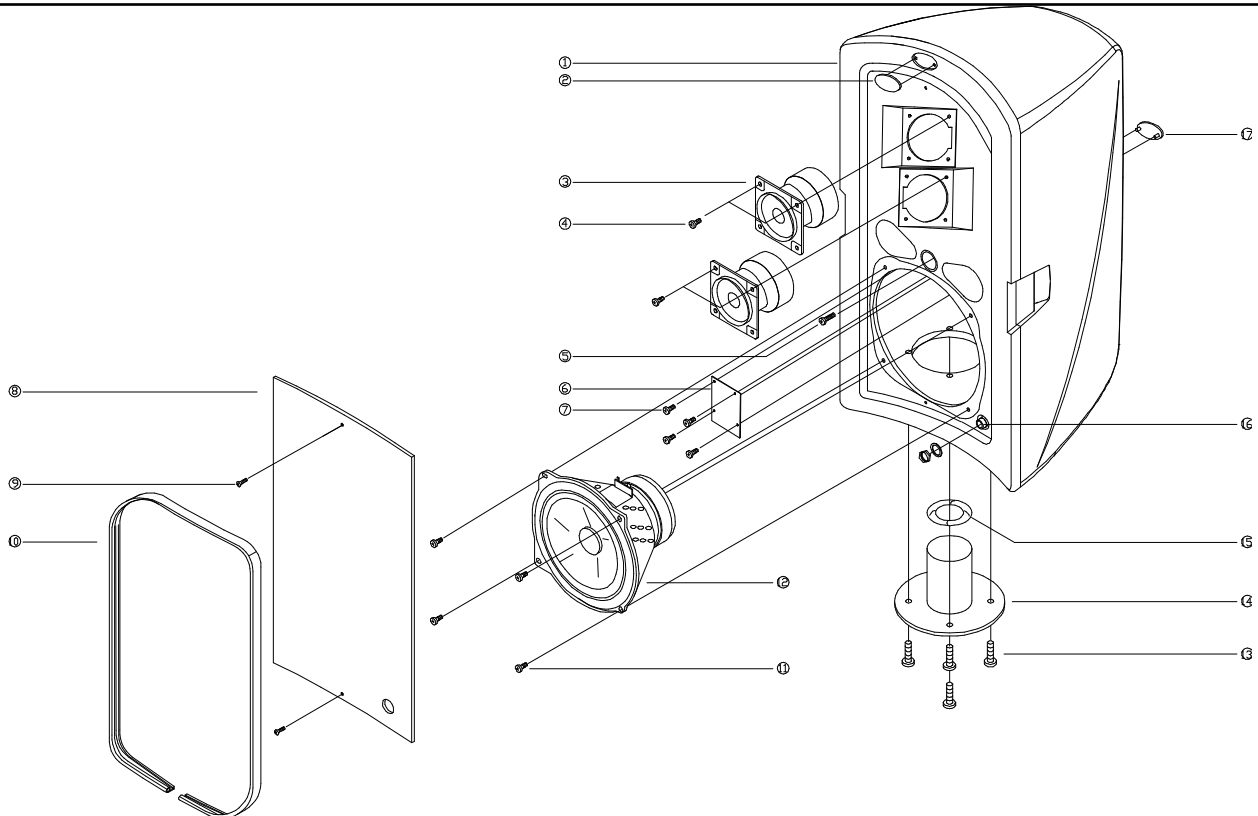
Main Unit Ass'y Exploded View - 4/4

NO.	PART NO.	DESCRIPTION	QTY
1	REF	1464-3500-0 LATCH	1
2	REF	4132-4681-0 LATCH BKT	1
3	REF	4132-4691-0 C PIN	2
4	REF	2751-5-0 SPRING-LATCH	1
5	REF	1464-3600-0 LATCH LOCKER	1

Fender

PASSPORT

Main Unit Ass'y Exploded View - 4/4



Speaker Ass'v Exploded View

NO.	PART NO.	DESCRIPTION	QTY
1	0079984000	SPEAKER BOX 150G2 PP	1
2	7706291000	BADGE-SPRUE CAP	1
3	0079986000	TWEETER FOR PG2-150	2
4	REF	SCREW TAP-C2 BH M4X 10	8
5	REF	SCREW B-TITE BIND M4X14	1
6	0079789000	PCXOVER FOR 150PC	1
7	REF	B-TITE 3X10MM (BLK.ZN)	4
8	REF	GRILLE 4132-4781-0 P150	1
9	REF	SCREW B-TITE FLAT-CS M3X	2
10	REF	GASKET SPEAKER	1
11	REF	SCREW TAP-C2 BH M4X 10	4
12	0079987000	WOOFER PG2-150	1
13	REF	SCREW BH M6X 25 MM BZ CR	4
14	REF	STAND PLUG BOTTOM EF010C	1
15	REF	EVA GASKET 5*500	0.3
16	0074732000	REAR PHONE JACK 5 PIN	1
17	0079979000	BADGE-SPRUE CAP	1

Fender

PASSPORT