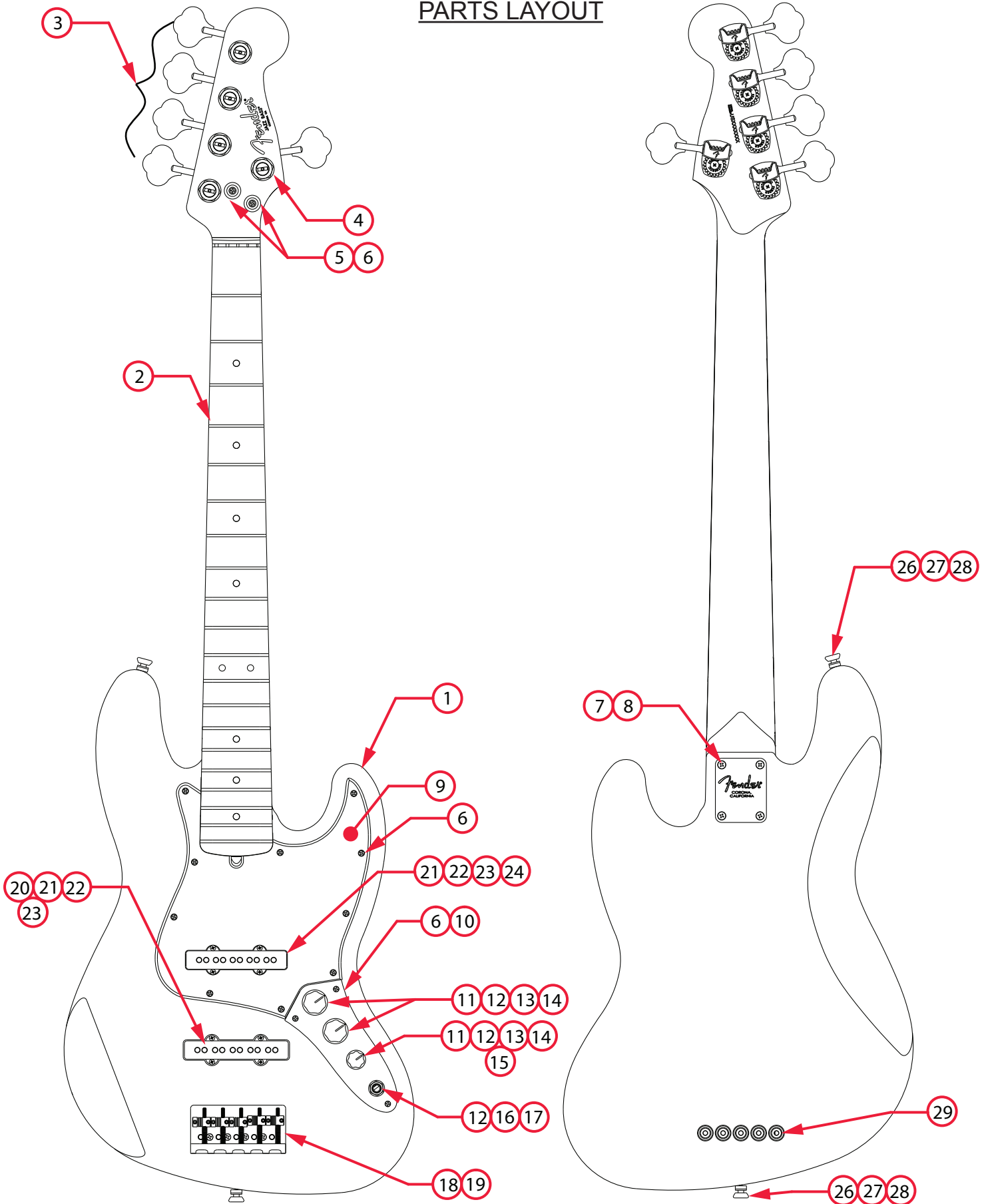


AMERICAN PRO JAZZ BASS® V (0193950000)

PARTS LAYOUT



AMERICAN PRO JAZZ BASS® V (0193950000)

PARTS LIST

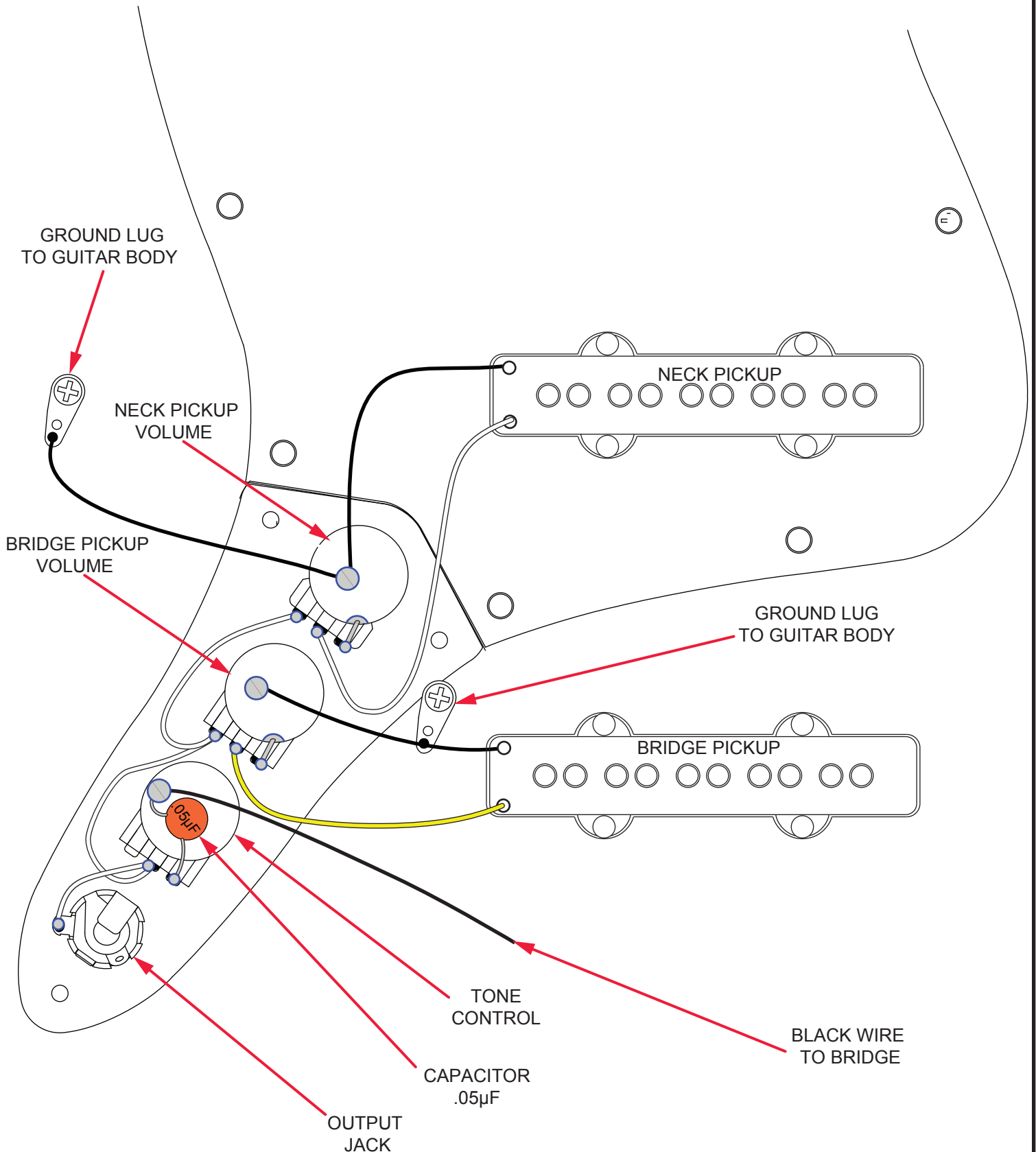
REF#	DESCRIPTION	PART NUMBER
1	BODY AM STD JAZZ BASS V 3TS	0055220500
1	BODY AM STD JAZZ BASS V OWT	0056192505
1	BODY AM STD JAZZ BASS V BLK	0056192506
1	BODY AM STD JAZZ BASS SNG	0056192548
2	NECK ASSY AM PRO J-BASS V MPL	7710494000
2	NECK ASSY AM PRO J-BASS V RW	7710493000
3	KEY BASS DLX NEW MOD TAPER SHORT	7710695000
4	KEY BASS DLX NEW MOD TAPER SHORT LH	7710696000
5	STRING GUIDE BASS NI	0075561000
6	SCREW SMAB 4 X 1/2 OHP NI	0015578049
7	NECK PLATE CORONA CA W/HARDWARE	0991446100
8	SCREW SMA 8 X 1-3/4 OHP NI	0015636049
9	PICKGUARD AM STD JAZZ BASS V P/B/P	0056204000
9	PICKGUARD AM STD JAZZ BASS V MG/BLK/MG	7710673000
10	PLATE CONTROL JAZZ BASS CHROME	0992057100
11	KNOB 2 LARGE 1 SMALL SKIRTED BLACK	0991370000
12	HEX NUT 3/8-32 X 3/32 TK NI	0016352049
13	WASHER LOCK INTL 3/8 X .687	0016436049
14	CONTROL 250K 10%	0990831000
15	CAPACITOR CD .05µF 100V 20%	0015552049
16	JACK PHONE OPEN CIRCUIT	0021956049
17	WASHER FLAT 3/8 X .614 NI	0031153049
18	BRIDGE ASSY HIGH MASS VINTAGE BASS V CHROME	0075128000
18A	BASE PLATE BASS V HIGH MASS VINTAGE	0075129000
18B	BRIDGE BACKSTOP BASS V HIGH MASS VINTAGE	0075130000
18C	BRIDGE SADDLE BASS V HMV 1-2	0075136000
18D	BRIDGE SADDLE BASS V HMV 3-5	0075137000
18E	SCREW 6-32 X 5/16 FHP ZI	0076154000
18F	SCREW CAP 6-32 X 1-1/2 HEX SKT BLX	0075394000
18G	SPRING TELE BRIDGE BLACK	0018872049
18H	SCREW SET 6-32 X 7/16 HEX SKT BLX NYLOK	0075354000
19	SCREW SMAB 5 X 1 OHP NI	0015610049
20	PICKUP ASSY AM PRO J-BASS V BRIDGE	7710536000
21	COVER PICKUP AM STD J-BASS V LONG	0048734000
22	SCREW WD 4 X 1-1/2 RHP NI	0078420000

*= NOT PICTURED IN DIAGRAM



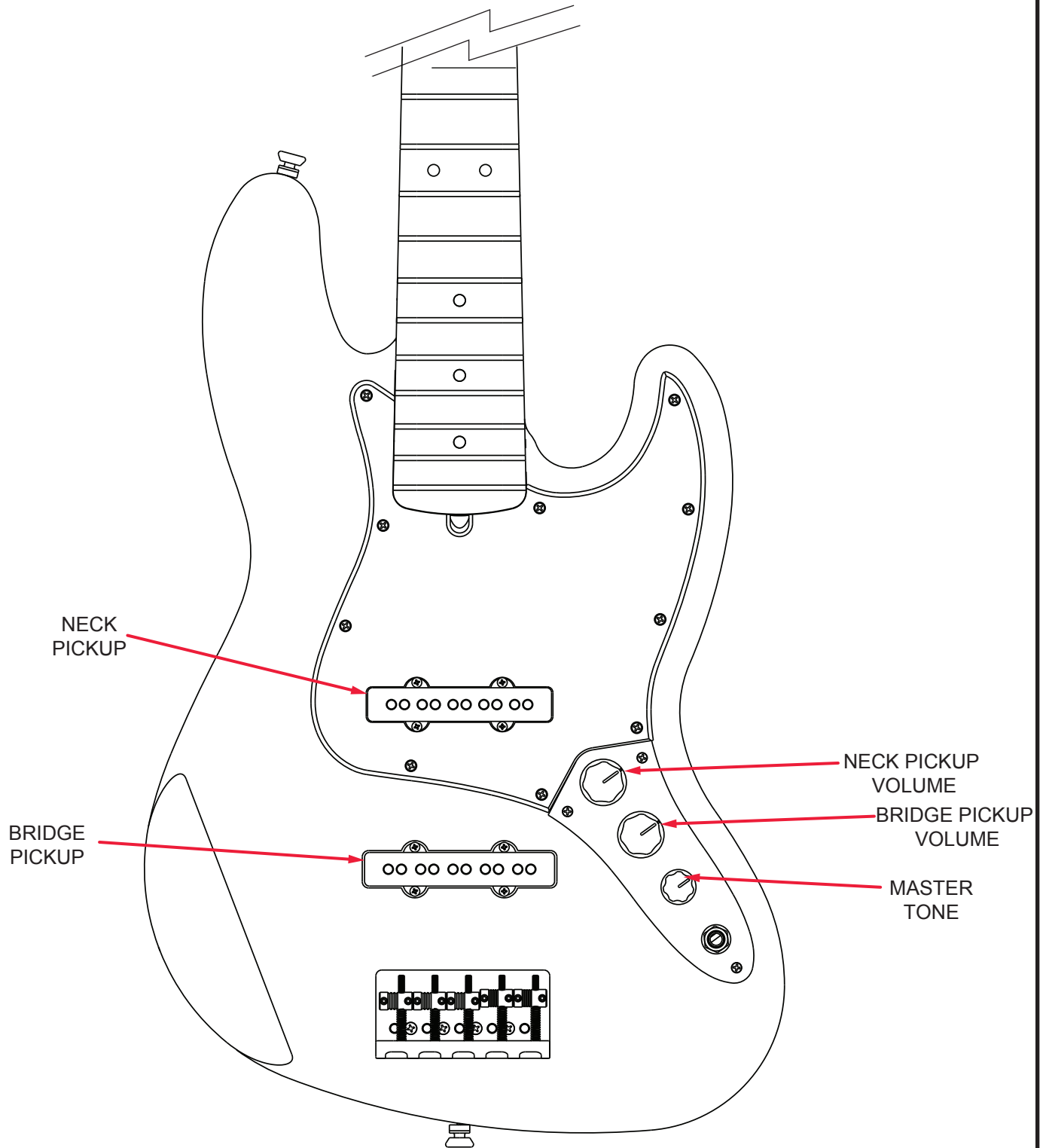
AMERICAN PRO JAZZ BASS® V (0193950000)

WIRING ASSEMBLY



AMERICAN PRO JAZZ BASS® V (0193950000)

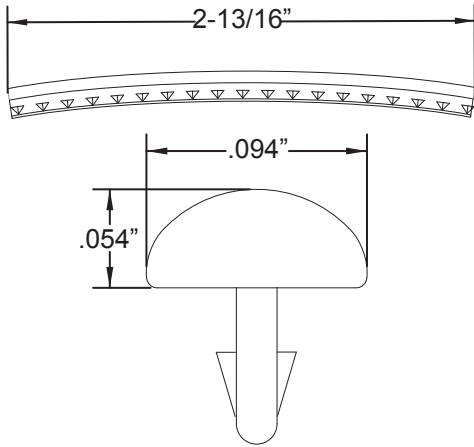
SWITCH AND CONTROL FUNCTION



AMERICAN PRO JAZZ BASS® V (0193950000)

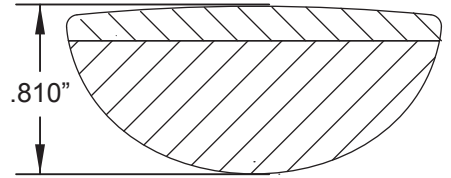
ADDITIONAL SPECIFICATION DETAIL

FRET SIZE: JUMBO NARROW
(FRET DIMENSIONS ARE BEFORE INSTALLATION)

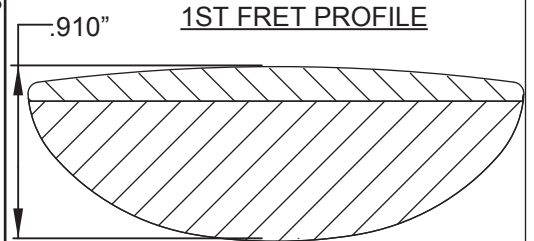


PLEASE NOTE: AS EACH NECK IS SANDED & FINISHED BY HAND, THICKNESS DIMENSIONS MAY VARY SLIGHTLY FROM THOSE SHOWN.

NECK PROFILE: MODERN "C"

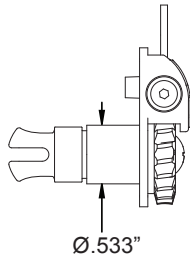


1ST FRET PROFILE

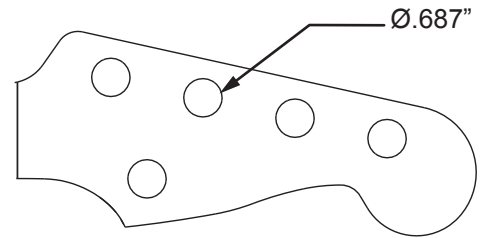


12TH FRET PROFILE

STAGGERED TUNING MACHINES SET: P/N 0097335049
OUTER SHAFT DIAMETER .533"

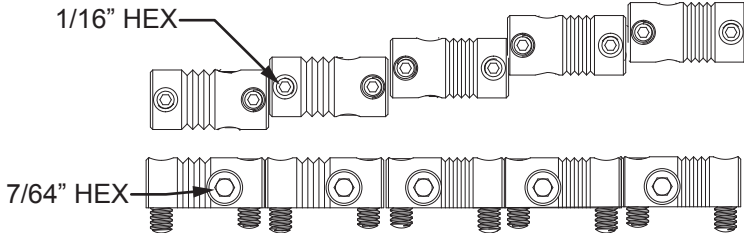


TUNING MACHINE THRU-HOLE
INNER DIAMETER .687"



SADDLE HEIGHT ADJUSTMENT WRENCH:
1/16" HEX KEY P/N 0021109049

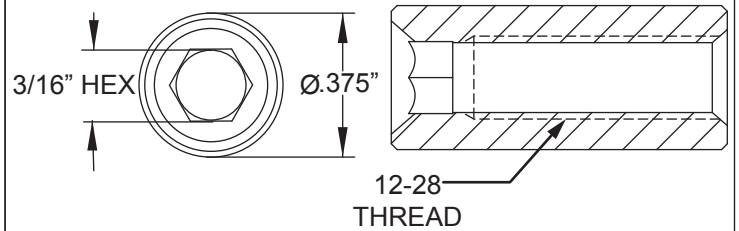
SADDLE HEIGHT ADJUSTMENT SCREWS: P/N 0075354000



INTONATION ADJUSTMENT WRENCH:
7/64 HEX KEY P/N 0995504002

TRUSS ROD ADJUSTMENT NUT:
P/N 0048688049

TRUSS ROD ADJUSTMENT WRENCH:
3/16" HEX KEY P/N 7710885000



LOGO: AM PRO J-BASS V DECAL
APPLIED UNDER THE FINISH



PICKUP SPECIFICATIONS

POSITION	MAGNETS	DC RESISTANCE	POLARITY
NECK	ALNICO 2 & 5 UNBEVELED	7.2 - 7.8KΩ	SOUTH
BRIDGE	ALNICO 2 & 5 UNBEVELED	7.5 - 8.1KΩ	NORTH