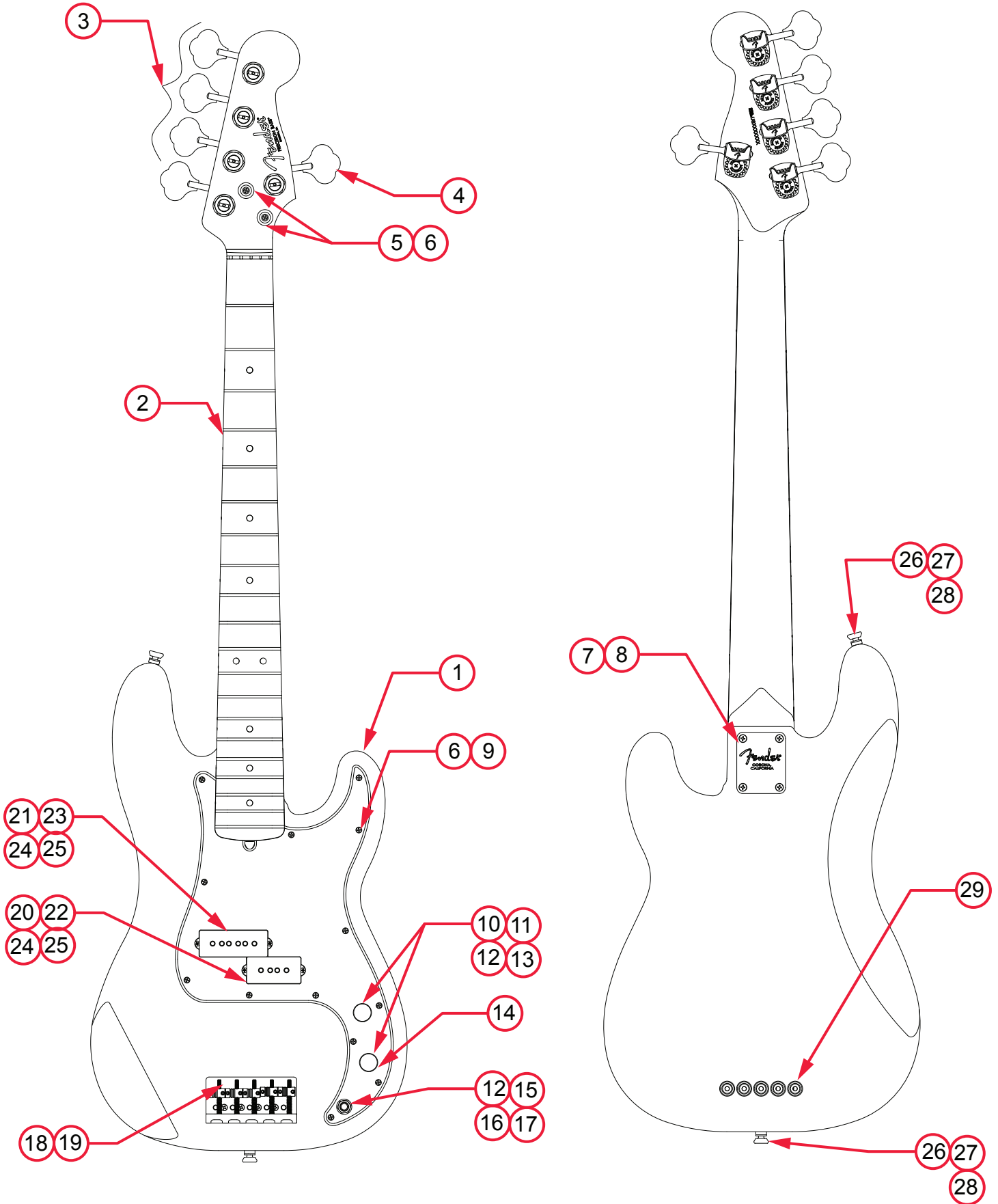


# AMERICAN PRO PRECISION BASS® V (019465XXX)

## PARTS LAYOUT



# AMERICAN PRO PRECISION BASS® V (019465XXX)

## PARTS LIST

REF#	DESCRIPTION	PART NUMBER
1	BODY AM STD P-BASS V 3TS	0075345500
1	BODY AM STD P-BASS V OWT	0075383505
1	BODY AM STD P-BASS V BLK	0075383506
1	BODY AM STD P-BASS V ATO	0075383576
2	NECK ASSY AM PRO P-BASS V RW	7710495000
2	NECK ASSY AM PRO P-BASS V MPL	7710496000
3	KEY BASS DLX NEW MOD TAPER SHORT	7710695000
4	KEY BASS DLX NEW MOD TAPER SHORT LH	7710696000
5	STRING GUIDE BASS NI	0075561000
6	SCREW SMAB 4 X 1/2 OHP NI	0015578049
7	NECK PLATE CORONA CA W/HARDWARE	0991446100
8	SCREW SMA 8 X 1-3/4 OHP NI	0015636049
9	PICKGUARD AM STD P-BASS V MG/BLK/MG	7710672000
10	KNOBS CONTROL ALUM CHROME W/SET SCREW	0095799049
11	CONTROL 250K 10% AUDIO METAL	0990831000
12	HEX NUT 3/8-32 X 3/32 TK NI	0016352049
13	WASHER LOCK INTL 3/8 X .687	0016436049
14	CAPACITOR CD .05µF 100V 20%	0015552049
15	JACK PHONE OPEN CIRCUIT	0021956049
16	WASHER FLAT 3/8 X .614 NI	0031153049
17	WASHER LOCKING INTL 3/8 X .500 X .020 NI	0022384049
18	BRIDGE ASSY HIGH MASS VINTAGE BASS V CHROME	0075128000
18A	BASE PLATE BASS V HIGH MASS VINTAGE	0075129000
18B	BRIDGE BACKSTOP BASS V HIGH MASS VINTAGE	0075130000
18C	BRIDGE SADDLE BASS V HMV 1-2	0075136000
18D	BRIDGE SADDLE BASS V HMV 3-5	0075137000
18E	SCREW 6-32 X 5/16 FHP ZI	0076154000
18F	SCREW CAP 6-32 X 1-1/2 HEX SKT BLX	0075394000
18G	SPRING TELE BRIDGE BLACK	0018872049
18H	SCREW SET 6-32 X 7/16 HEX SKT BLX NYLOK	0075354000
19	SCREW SMAB 5 X 1 OHP NI	0015610049
20	PICKUP ASSY AM PRO P-BASS V BRIDGE	7710531000
21	PICKUP ASSY AM PRO P-BASS V NECK	7710532000
22	COVER PICKUP P-BASS DLX V BRIDGE	0056036000
23	COVER PICKUP P-BASS DLX V NECK	0056037000
24	SCREW 4 X 1-1/4 WOOD RHP NI	0027035049

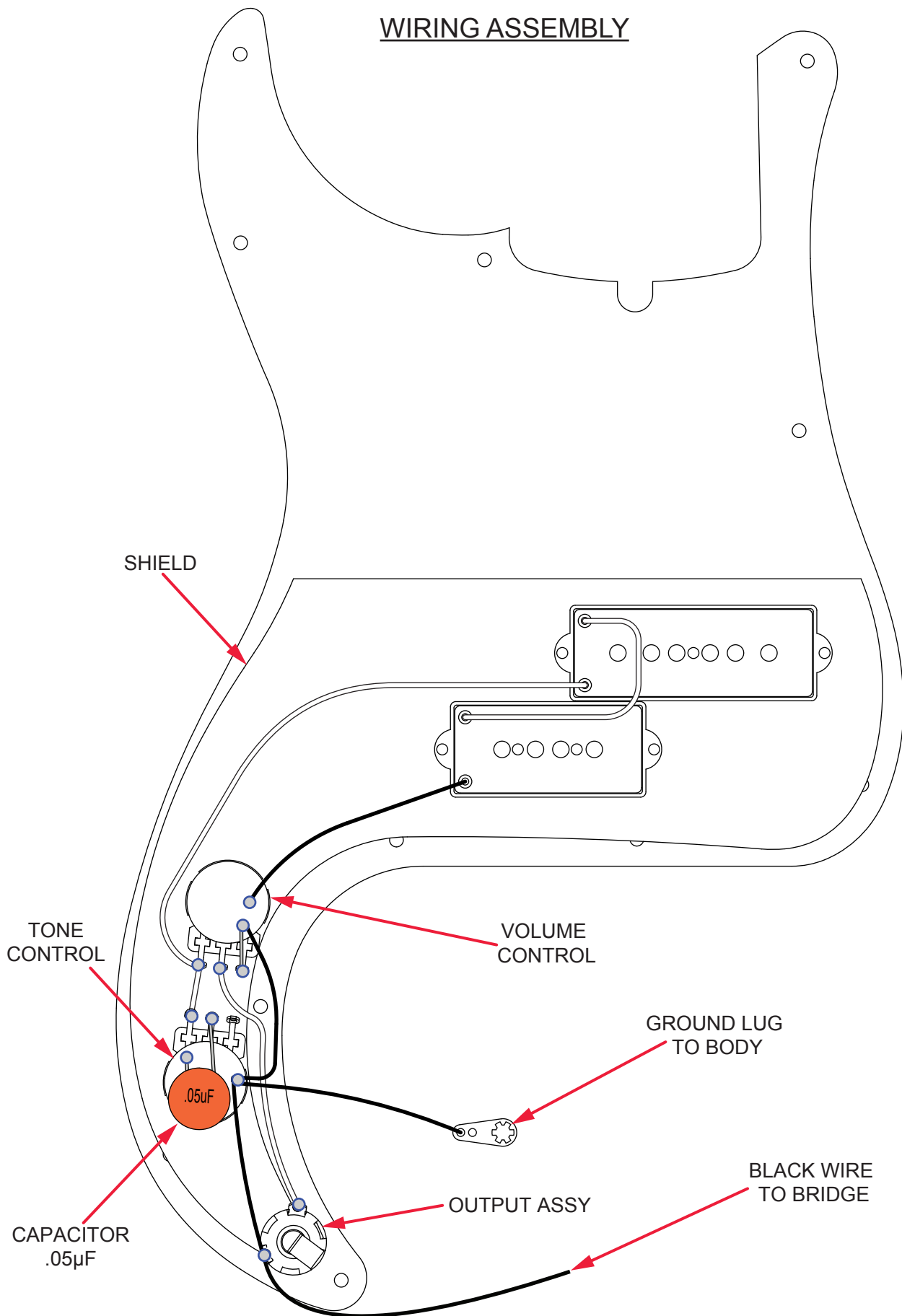
\*= NOT PICTURED IN DIAGRAM





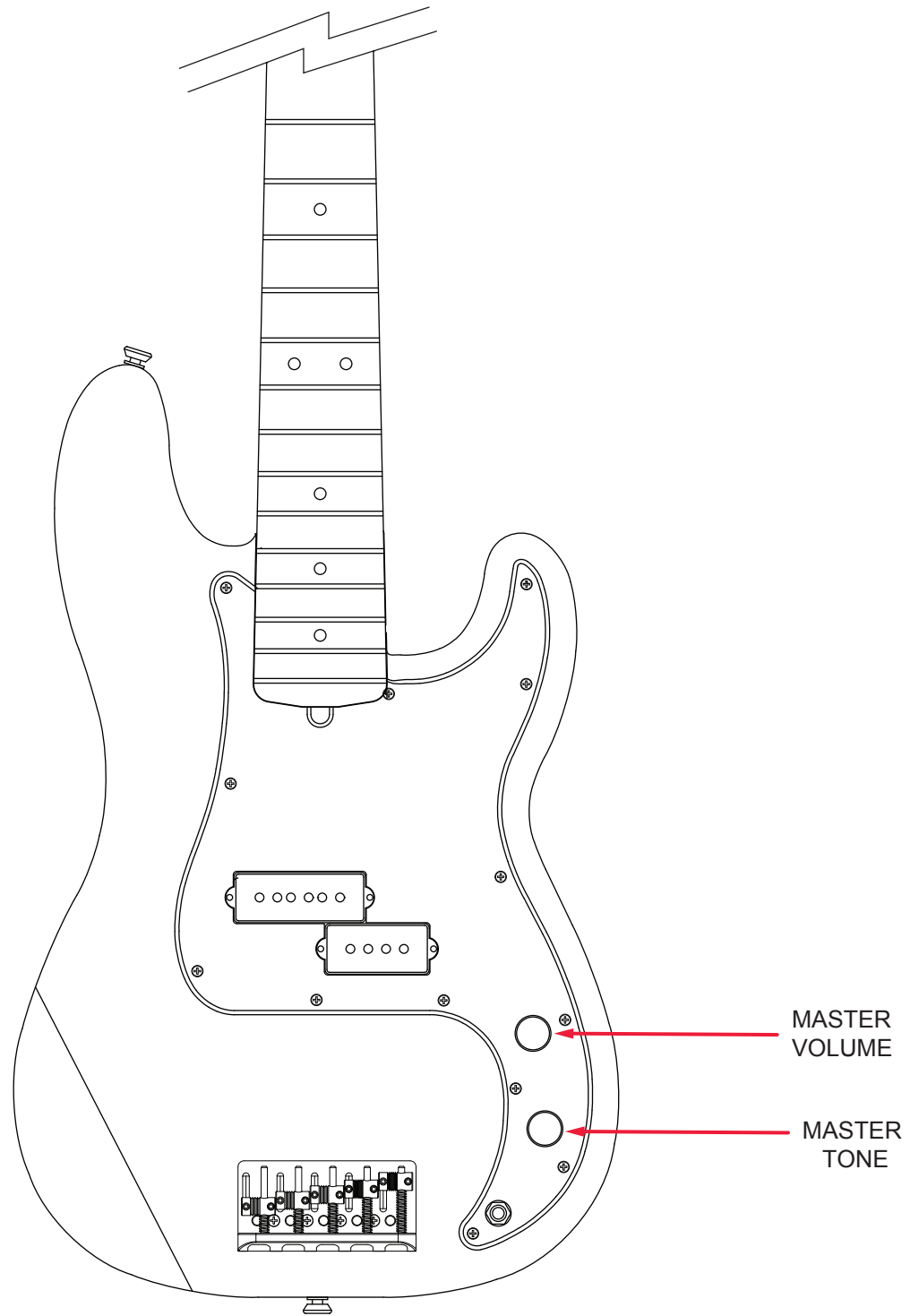
# AMERICAN PRO PRECISION BASS® V (019465XXX)

## WIRING ASSEMBLY



**AMERICAN PRO PRECISION BASS® V (019465XXX)**

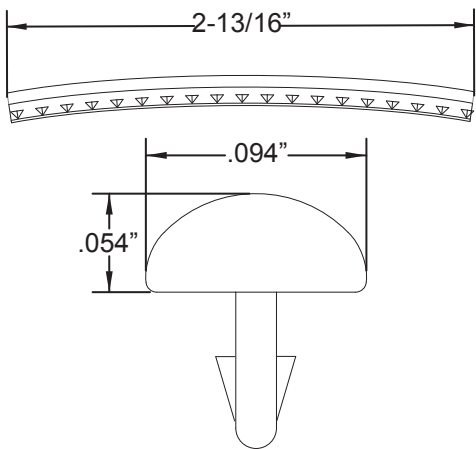
**SWITCH AND CONTROL FUNCTION**



# AMERICAN PRO PRECISION BASS® V (019465XXXX)

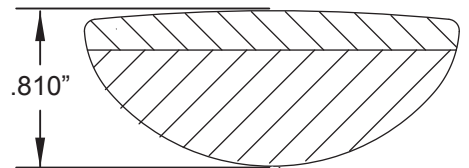
## ADDITIONAL SPECIFICATION DETAIL

**FRET SIZE: JUMBO NARROW**  
(FRET DIMENSIONS ARE BEFORE INSTALLATION)

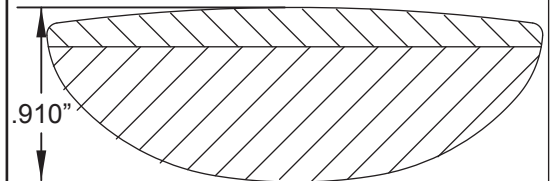


PLEASE NOTE: AS EACH NECK IS SANDED & FINISHED BY HAND, THICKNESS DIMENSIONS MAY VARY SLIGHTLY FROM THOSE SHOWN.

**NECK PROFILE: MODERN "C"**

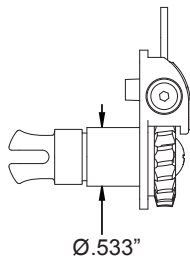


1ST FRET PROFILE

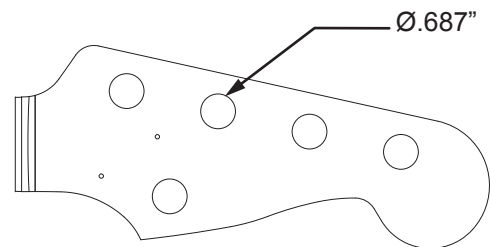


12TH FRET PROFILE

**STAGGERED TUNING MACHINES SET: P/N 0097335049**  
**OUTER SHAFT DIAMETER .533"**

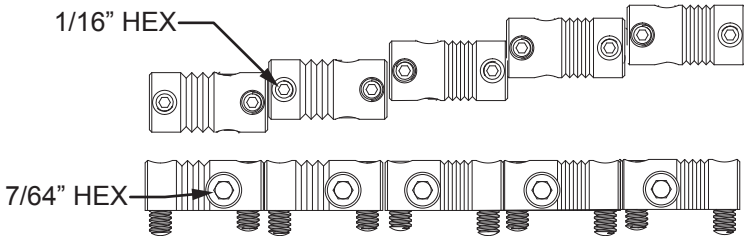


**TUNING MACHINE THRU-HOLE**  
**INNER DIAMETER .687"**



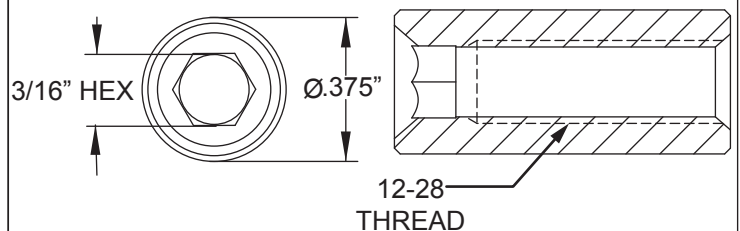
**SADDLE HEIGHT ADJUSTMENT WRENCH:**  
**1/16" HEX KEY P/N 0021109049**

**SADDLE HEIGHT ADJUSTMENT SCREWS: P/N 0075354000**



**INTONATION ADJUSTMENT WRENCH:**  
**7/64 HEX KEY P/N 0995504002**

**TRUSS ROD ADJUSTMENT NUT:**  
**P/N 0048688049**  
**TRUSS ROD ADJUSTMENT WRENCH:**  
**3/16" HEX KEY P/N 7710885000**



**LOGO: AM PRO P-BASS V DECAL**  
**APPLIED UNDER THE FINISH**



### PICKUP SPECIFICATIONS

POSITION	MAGNETS	DC RESISTANCE	POLARITY
NECK	ALNICO 2 BEVELED	6.3 - 6.9KΩ	SOUTH
BRIDGE	ALNICO 5 BEVELED	5.4 - 6.0KΩ	NORTH