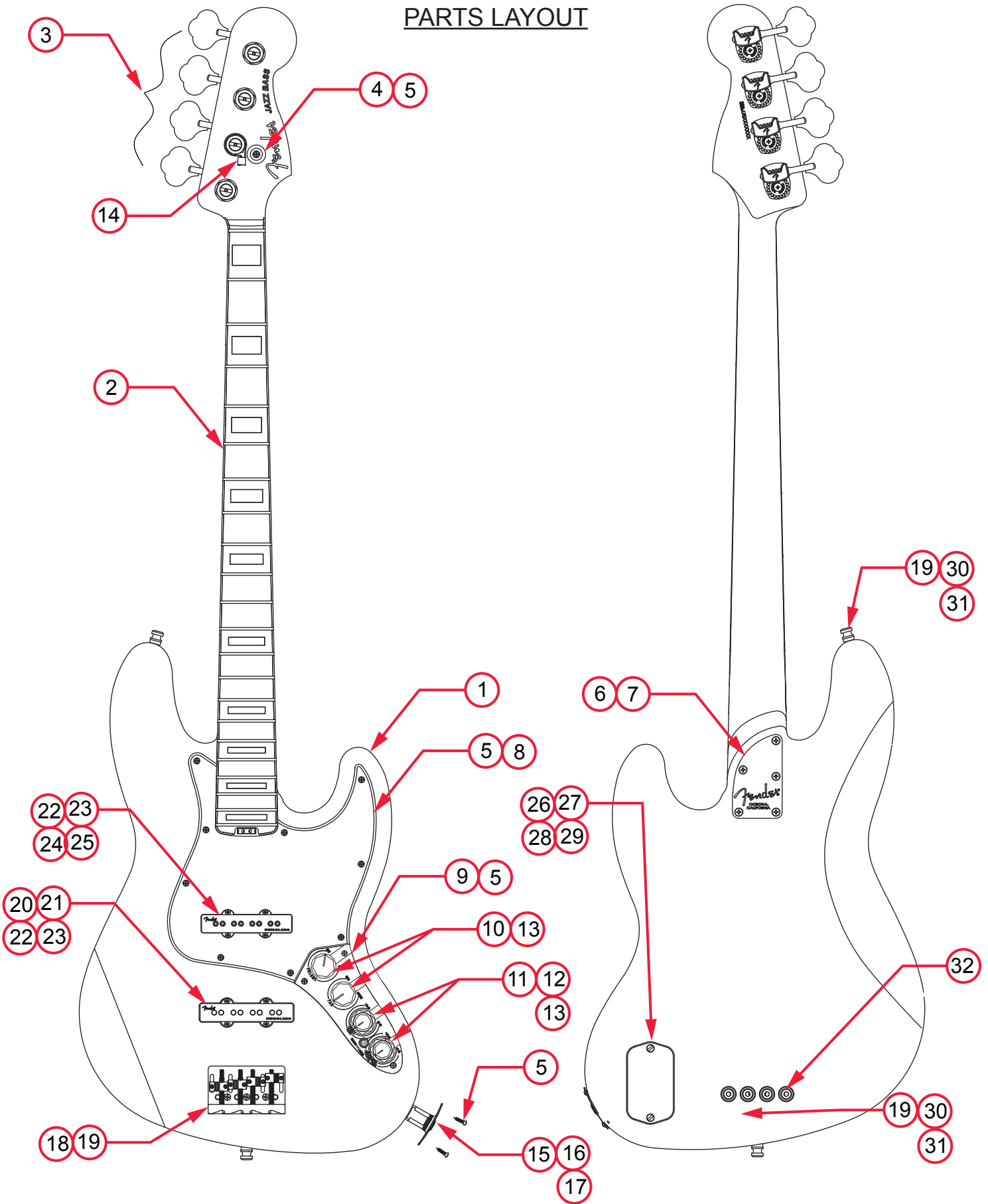


AMERICAN ELITE JAZZ® BASS (019700XXXX)

PARTS LAYOUT



AMERICAN ELITE JAZZ® BASS (019700XXXX)

PARTS LIST

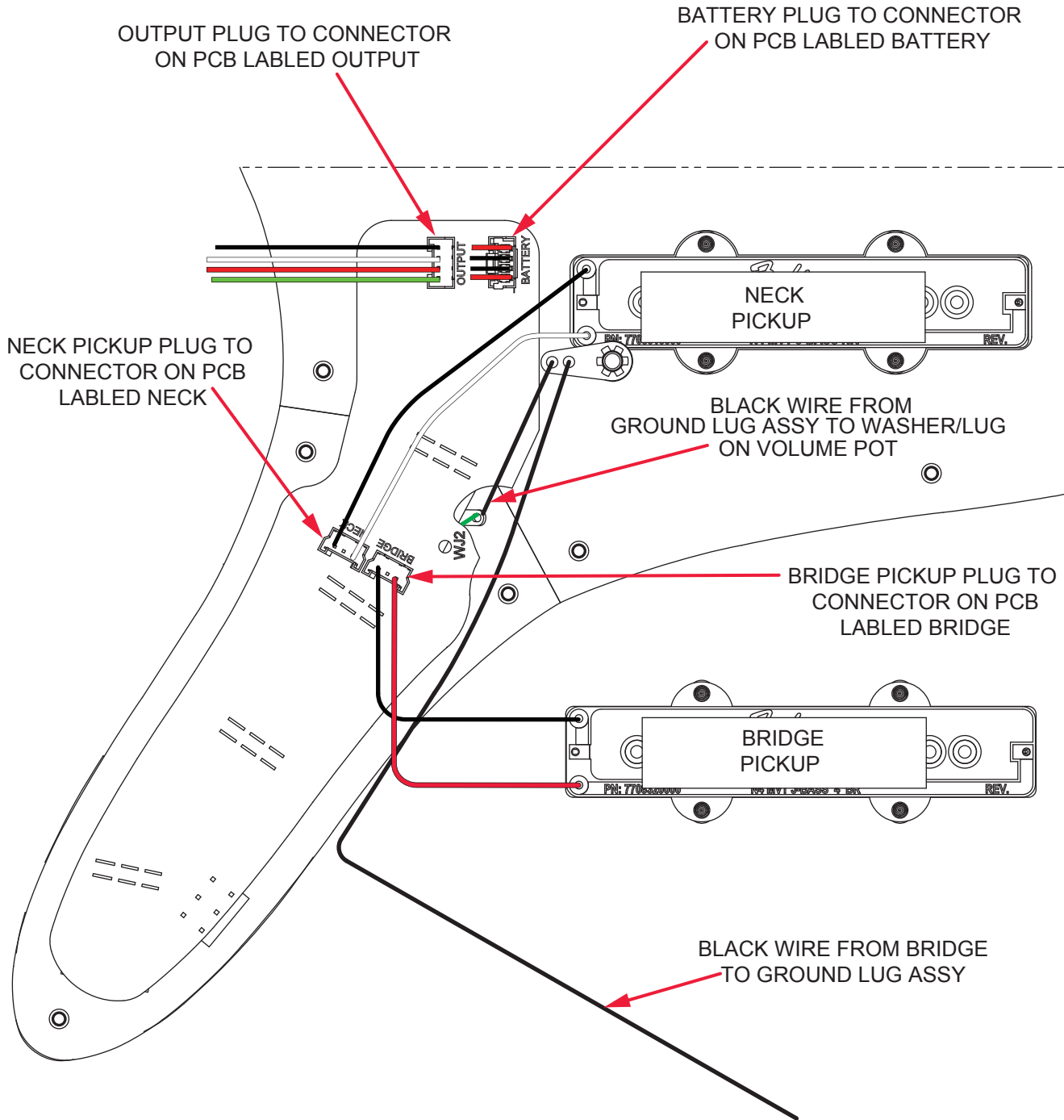
REF#	DESCRIPTION	PART NUMBER
1	BODY AM ELITE J-BASS 3TS	7708050500
1	BODY AM ELITE J-BASS OWT	7708493505
1	BODY AM ELITE J-BASS BLK	7708493506
1	BODY AM ELITE J-BASS NAT	7708364521
1	BODY AM ELITE J-BASS TBS	7708364552
2	NECK ASSY AM ELITE J-BASS RW	7708052000
2	NECK ASSY AM ELITE J-BASS MPL	7708051000
3	KEYS BASS FENDER DLX LONG CHROME	0097335049
4	STRING GUIDE P/J BASS CHROME	0079014000
5	SCREW SMAB 4 X 1/2 OHP NI	0015578049
6	NECK PLATE BASS 5-BOLT CHROME	0058329000
7	SCREW SMA 8 X 1-3/4 OHP NI	0015636049
8	PICKGUARD AM ELITE J-BASS IV MG/BLK/MG	7708501000
8	PICKGUARD AM ELITE J-BASS IV B/W/B	7708308000
9	PLATE CONTROL J-BASS AM DLX 2010	0078864000
10	KNOB LARGE SKIRTED BLACK W/SET SCREW	0991370000
11	KNOB LOWER CONCENTRIC BLACK W/SET SCREW	0049412049
12	KNOB UPPER CONCENTRIC BLACK W/SET SCREW	0049411049
13*	PCB CONTROL AM ELITE J-BASS W/MTG HDWR	7708254000
14	STRING GUIDE AM DLX BASS A STRING CHROME	0080597000
15	JACK 6.3 OUTPUT	0073618000
16	FERRULE JACK RECESS FOOTBALL CHROME	0050100000
17*	WIRE HARNESS OUTPUT 4-PIN 24GA 9.5"	7708984000
18	BRIDGE ASSY HIGH MASS VINTAGE BASS CHROME	0075124000
18A	BASE PLATE HIGH MASS VINTAGE BASS CHROME	0075125000
18B	BLOCK HIGH MASS VINTAGE BASS CHROME	0075126000
18C	BRIDGE SADDLE HMV BASS 1-2	0075127000
18D	BRIDGE SADDLE HMV BASS 3-4	0075135000
18E	SCREW 6-32 X 5/16 FHP ZI	0076154000
18F	SCREW CAP 6-32 X 1-1/2 HEX SKT BLX	0075394000
18G	SPRING TELE BRIDGE BLACK	0018872049
18H	SCREW SET 6-32 X 7/16 HEX SKT BLX NYLOK	0075354000
19	SCREW SMAB 5 X 1 OHP NI	0015610049
20	PICKUP ASSY DLX NOISELESS J-BASS IV BRIDGE BLK	7708441000
21	PICKUP COVER J-BASS IV DLX NOISELESS BRIDGE BLK	7708569020
22	WEATHERSTRIPPING 9/16 X 1/2 OP CL NEOP	0018556049

*= NOT PICTURED IN DIAGRAM



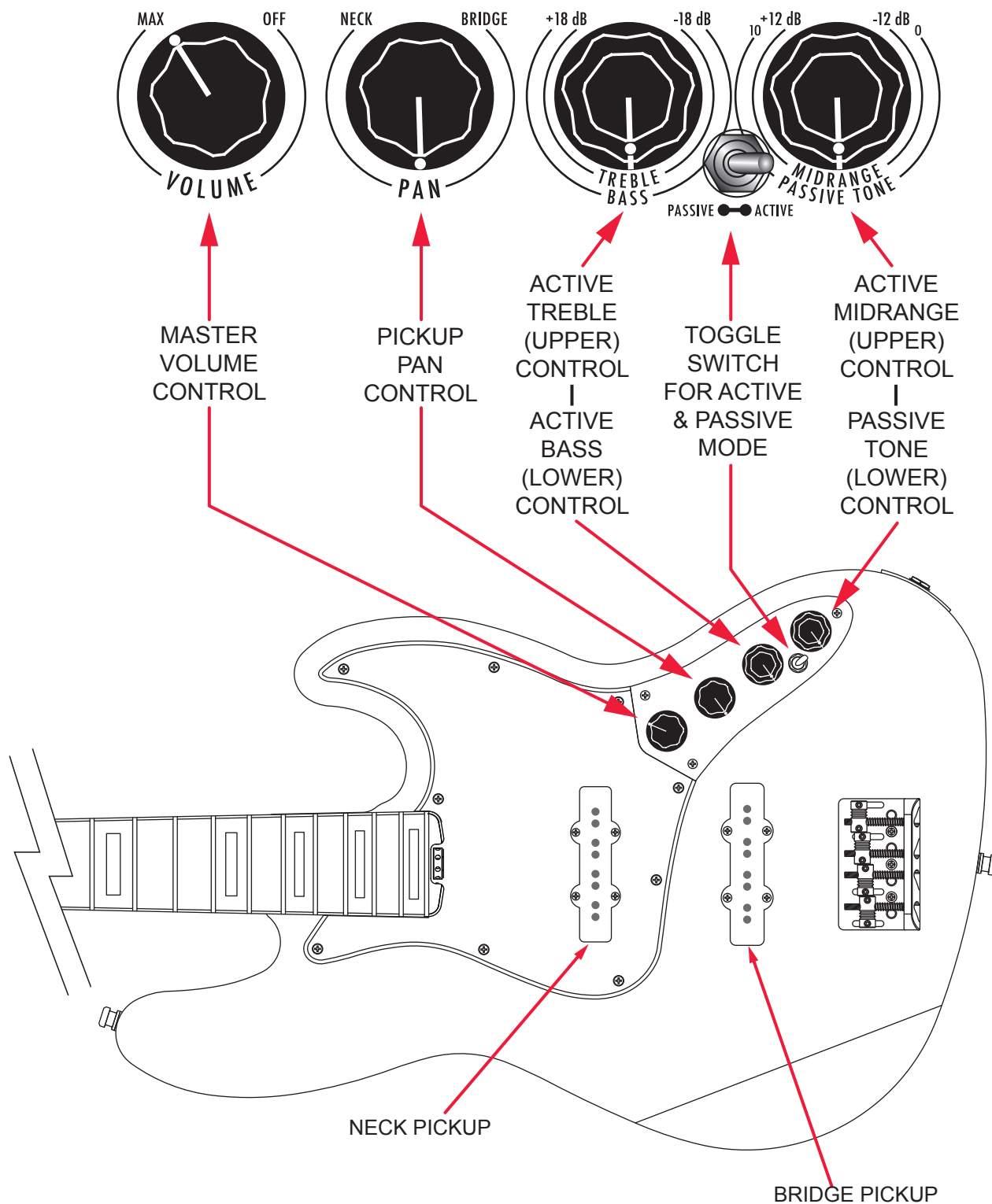
AMERICAN ELITE JAZZ® BASS (019700XXXX)

WIRING ASSEMBLY



AMERICAN ELITE JAZZ® BASS (019700XXXX)

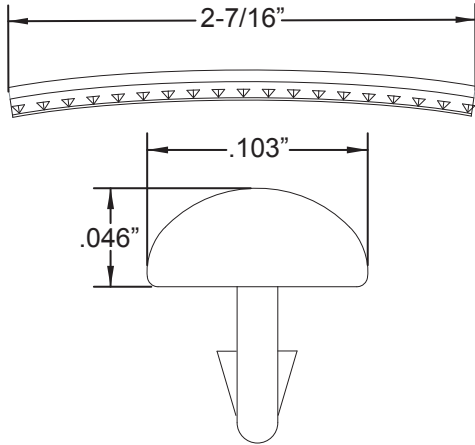
SWITCH AND CONTROL FUNCTION



AMERICAN ELITE JAZZ® BASS (019700XXXX)

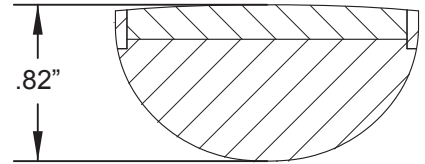
ADDITIONAL SPECIFICATION DETAIL

FRET SIZE: MEDIUM JUMBO
(FRET DIMENSIONS ARE BEFORE INSTALLATION)

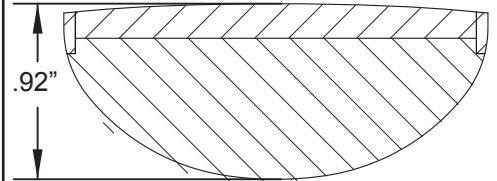


PLEASE NOTE: AS EACH NECK IS SANDED & FINISHED BY HAND, THICKNESS DIMENSIONS MAY VARY SLIGHTLY FROM THOSE SHOWN.

NECK PROFILE: MODERN "C"

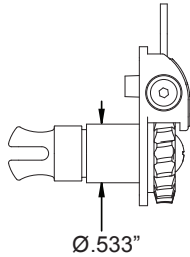


1ST FRET PROFILE

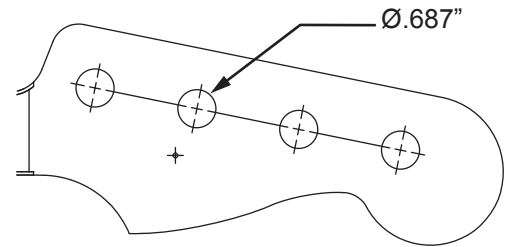


12TH FRET PROFILE

STAGGERED TUNING MACHINES SET: P/N 0097335049
OUTER SHAFT DIAMETER .533"

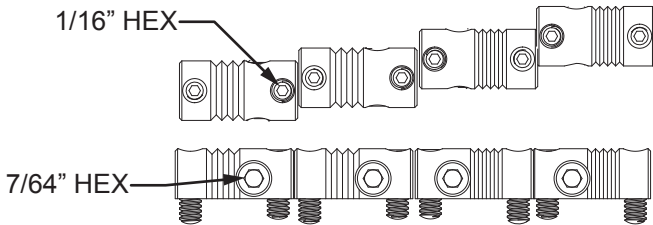


TUNING MACHINE THRU-HOLE
INNER DIAMETER .687"



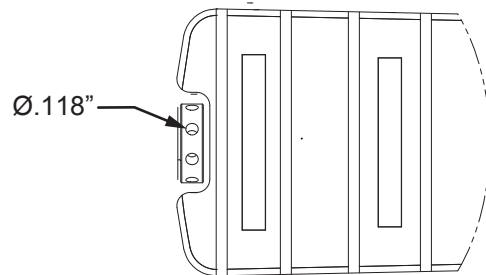
SADDLE HEIGHT ADJUSTMENT WRENCH:
1/16" HEX KEY P/N 0021109049

SADDLE HEIGHT ADJUSTMENT SCREWS: P/N 0075354000



INTONATION ADJUSTMENT WRENCH:
7/64 HEX KEY P/N 0995504002

TRUSS ROD THUMB WHEEL:
P/N 7708832000 GOLD - P/N 7708809000 BLACK
TRUSS ROD ADJUSTMENT WRENCH:
3/32" HEX KEY P/N 0018622000



LOGO: AM ELITE J-BASS DECAL
APPLIED UNDER THE FINISH



PICKUP SPECIFICATIONS

POSITION	MAGNETS	DC RESISTANCE	POLARITY
NECK	ALNICO 5 UNBEVELED	10.8 - 11.2KΩ	NORTH
BRIDGE	ALNICO 5 UNBEVELED	12.3 - 12.7KΩ	NORTH