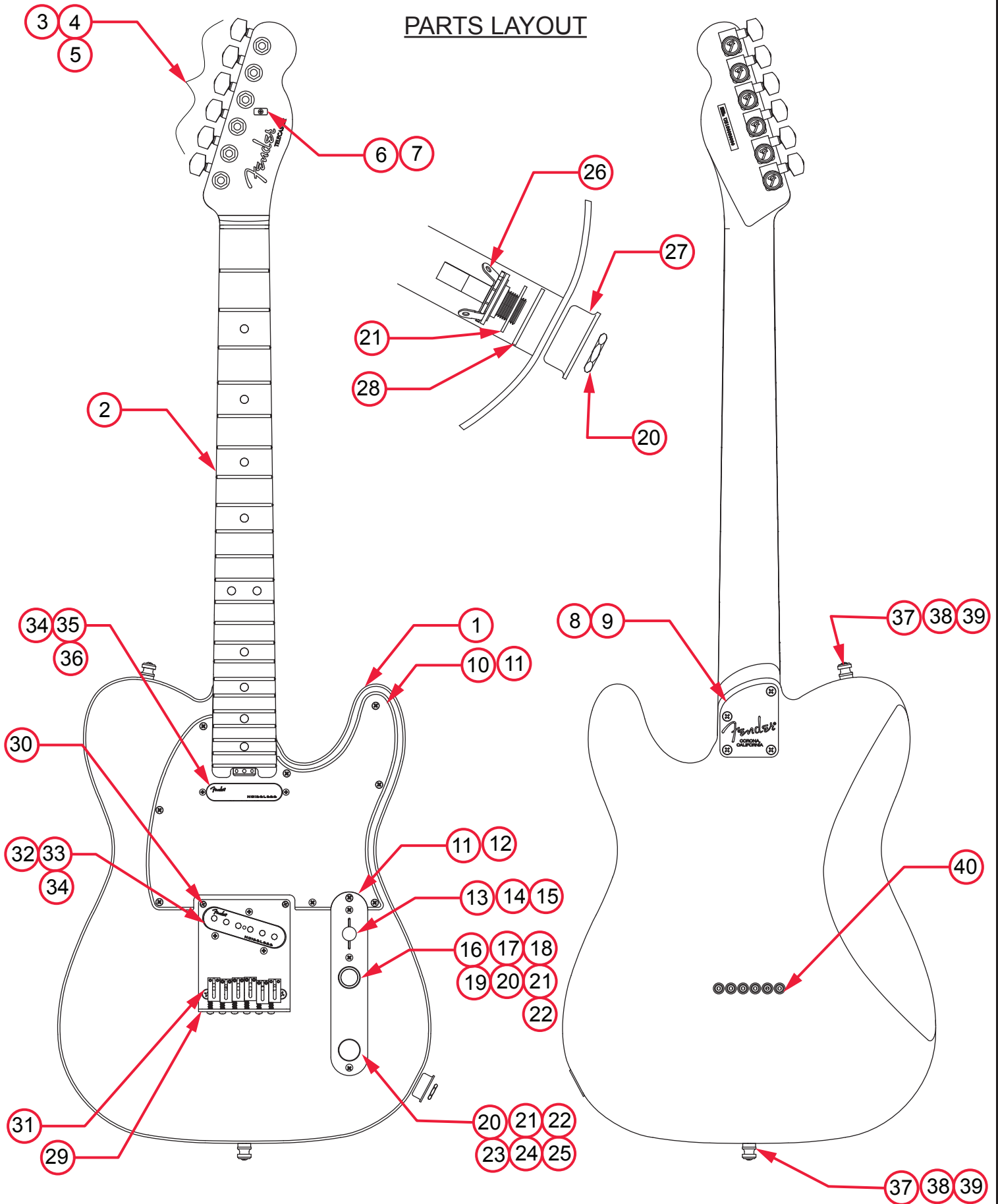


AMERICAN ELITE TELECASTER® (011421XXXX)

PARTS LAYOUT



AMERICAN ELITE TELECASTER® (011421XXXX)

PARTS LIST

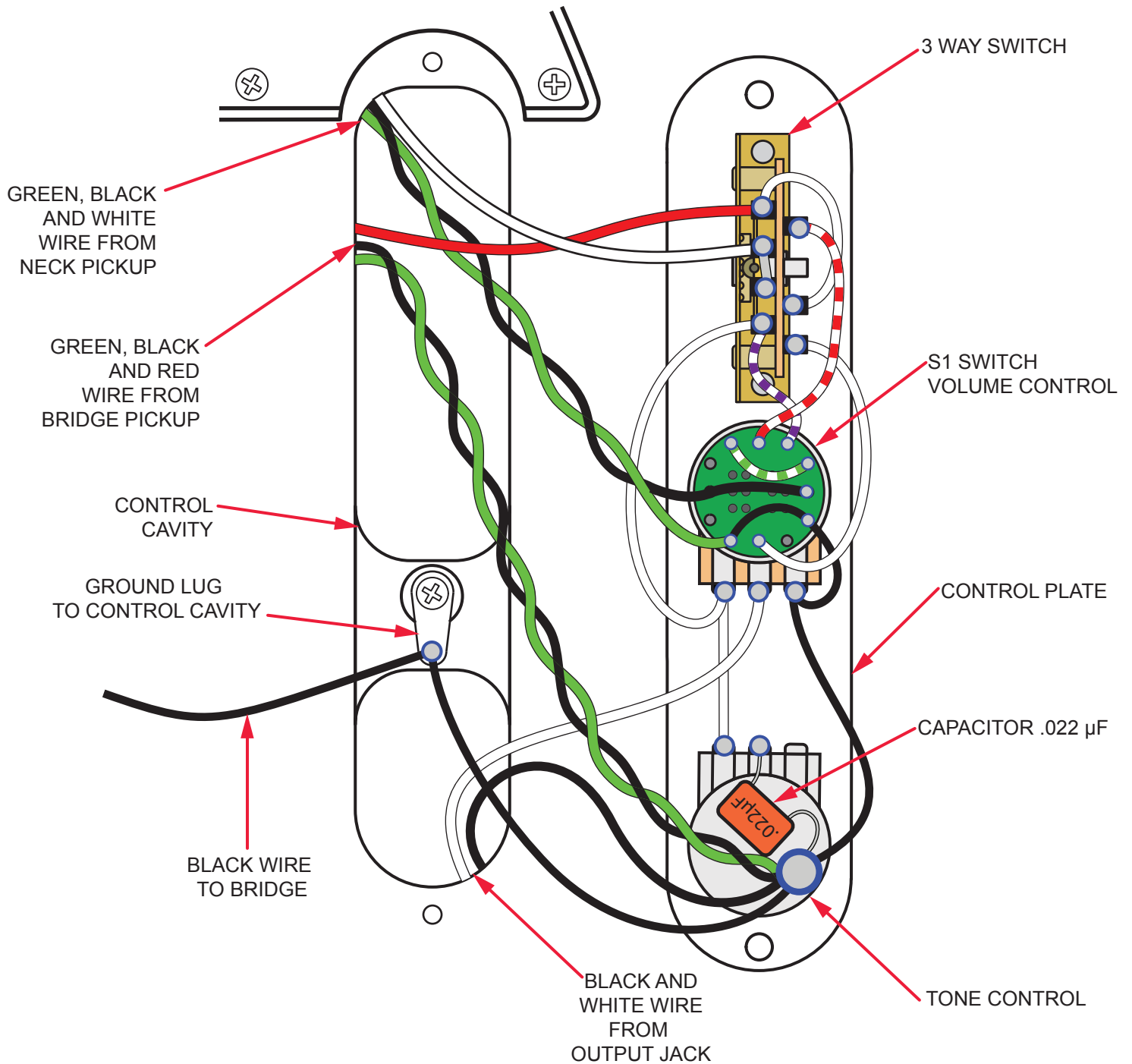
REF#	DESCRIPTION	PART NUMBER
1	BODY AM ELITE TELE WHT BINDING 3TSB	7708458500
1	BODY AM ELITE TELE WHT BINDING MYSBLK	7708460510
1	BODY AM ELITE TELE WHT BINDING ACB	7708458531
1	BODY AM ELITE TELE BLK BINDING BTB	7708461550
1	BODY AM ELITE TELE BLK BINDING TBS	7708459552
1	BODY AM ELITE TELE WHT BINDING ABM	7708460596
2	NECK ASSY AM ELITE TELE MPL	7708462000
2	NECK ASSY AM ELITE TELE RW	7708463000
3	KEY LOCKING 1,2,3 POLISHED CHROME EA	0073114000
4	BUSHING KEY SET	0058820049
5	WASHER KEY SET	0053106049
6	STRING TREE AM ELITE GUITAR CHROME	7708381000
7	SCREW SMA 2 X 9/16 FHP NICKEL	0051621000
8	NECK PLATE GUITAR DELUXE CHROME ALUM RH NO HOLE	7708496000
9	SCREW SMA 8 X 1-3/4 OHP NICKEL	0015636049
10	PICKGUARD AM ELITE TELE WHITE PEARL	7708406000
10	PICKGUARD AM ELITE TELE BLK/WHT/BLK	7708408000
10	PICKGUARD AM ELITE TELE MG/BLK/MG	7708229000
10	PICKGUARD AM ELITE TELE 1-PLY BLACK	7709277000
11	SCREW SMAB 4 X 1/2 ONP NICKEL	0015578049
12	CONTROL PLATE TELE VINT CHROME	0093823000
13	3 WAY LEVER SWITCH	0992041000
14	SWITCH KNOB VINT TELE	0994936000
15	SCREW 6-32 X 5/8 RHP NICKEL	0994925000
16	SW KNOB TELE/P-BASS CHROME	0059272000
17	SW CAP TELE/P-BASS CHROME	0059270000
*18	COUPLING SLEEVE SOSH NYL	0059278000
*19	SW/POT ASSY S-1 250K SOSH	0078979000
*20	NUT HEX 3/8-32 X 3/32 TK NI	0016352049
*21	WASHER LOCK INTL 3/8 X .687	0016436049
*22	SCREW SET 8-32 X 3/16	9949220000
23	KNOB CONTROL ALUM CHROME	0095799000
*24	CONTROL 250K 10% TAPER NO LOAD SOSH	0078782000
*25	CAPACITOR MPF RDL .022µF 250V	0024832049
26	JACK PHONE OPEN CIRUIT 11	0021956049
27	JACK FERRULE STD TELE CHROME	0021452000
28	RETAINER JACK NI PLT TELE	0010355069

*= NOT PICTURED IN DIAGRAM



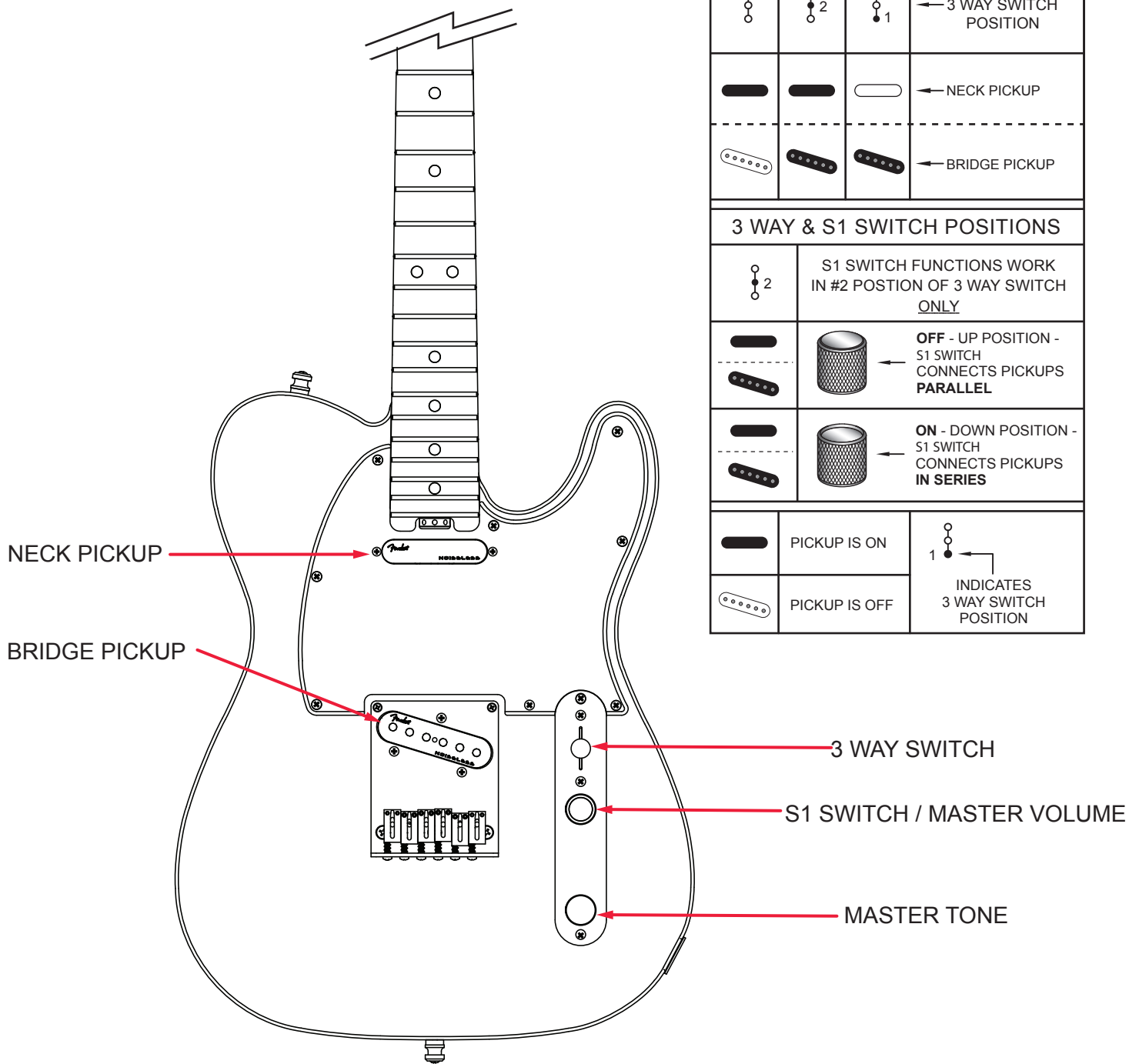
AMERICAN ELITE TELECASTER® (011421XXXX)

WIRING ASSEMBLY



AMERICAN ELITE TELECASTER® (011421XXXX)

SWITCH AND CONTROL FUNCTION

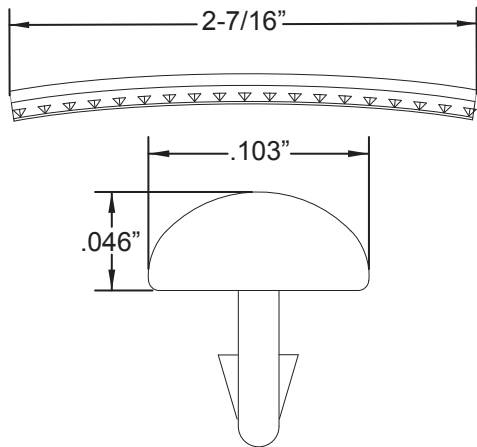


3 WAY SWITCH POSITIONS			
			← 3 WAY SWITCH POSITION
			← NECK PICKUP
<hr/>			
			← BRIDGE PICKUP
3 WAY & S1 SWITCH POSITIONS			
	S1 SWITCH FUNCTIONS WORK IN #2 POSITION OF 3 WAY SWITCH <u>ONLY</u>		
		← OFF - UP POSITION - S1 SWITCH CONNECTS PICKUPS PARALLEL	
		← ON - DOWN POSITION - S1 SWITCH CONNECTS PICKUPS IN SERIES	
	PICKUP IS ON		INDICATES 3 WAY SWITCH POSITION
	PICKUP IS OFF		

AMERICAN ELITE TELECASTER® (011421XXXX)

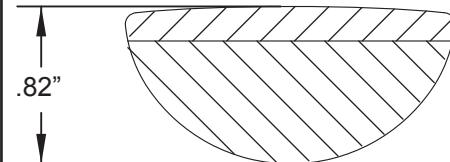
ADDITIONAL SPECIFICATION DETAIL

FRET SIZE: MEDIUM JUMBO
(FRET DIMENSIONS ARE BEFORE INSTALLATION)

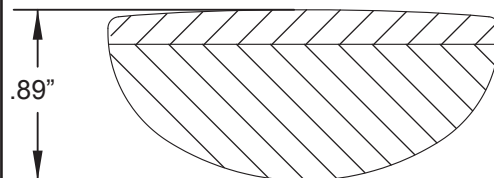


PLEASE NOTE: AS EACH NECK IS SANDED & FINISHED BY HAND, THICKNESS DIMENSIONS MAY VARY SLIGHTLY FROM THOSE SHOWN.

NECK PROFILE: COMPOUND "C" TO "D"

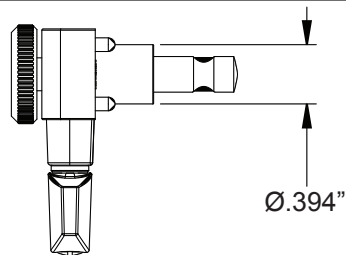


1ST FRET PROFILE

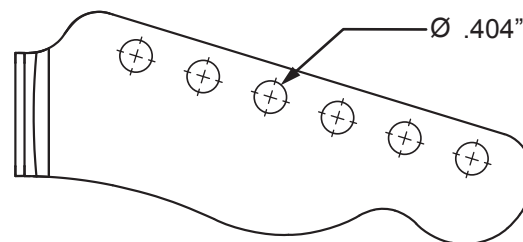


12TH FRET PROFILE

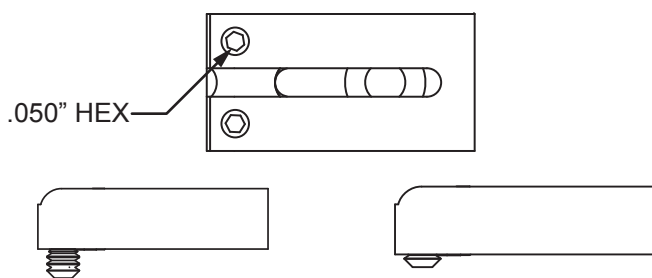
STAGGERED LOCKING TUNING MACHINES EA: P/N 0073114000
OUTER SHAFT DIAMETER .394"



TUNING MACHINE THRU-HOLE
INNER DIAMETER .404"

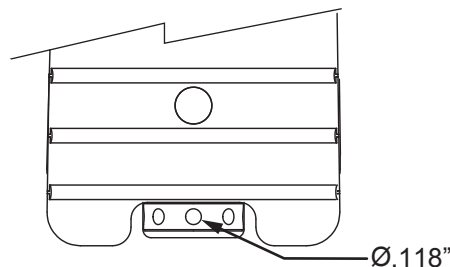


SADDLE HEIGHT ADJUSTMENT WRENCH:
.050" HEX KEY P/N 0018531049



SADDLE HEIGHT ADJUSTMENT SCREWS:
TALL: P/N 0031913049 SHORT: P/N 0017031049

TRUSS ROD THUMB WHEEL:
P/N 7708832000 GOLD - P/N 7708809000 BLACK
TRUSS ROD ADJUSTMENT WRENCH:
3/32" HEX KEY P/N 0018622000



LOGO: AM ELITE TELE DECAL BLACK CHROME
APPLIED UNDER THE FINISH



PICKUP SPECIFICATIONS

POSITION	MAGNETS	DC RESISTANCE	POLARITY
NECK	ALNICO 5 UNBEVELED	10.4 - 10.8KΩ	NORTH
MIDDLE	-	-	-
BRIDGE	ALNICO 5 UNBEVELED	10.4 - 10.8KΩ	NORTH