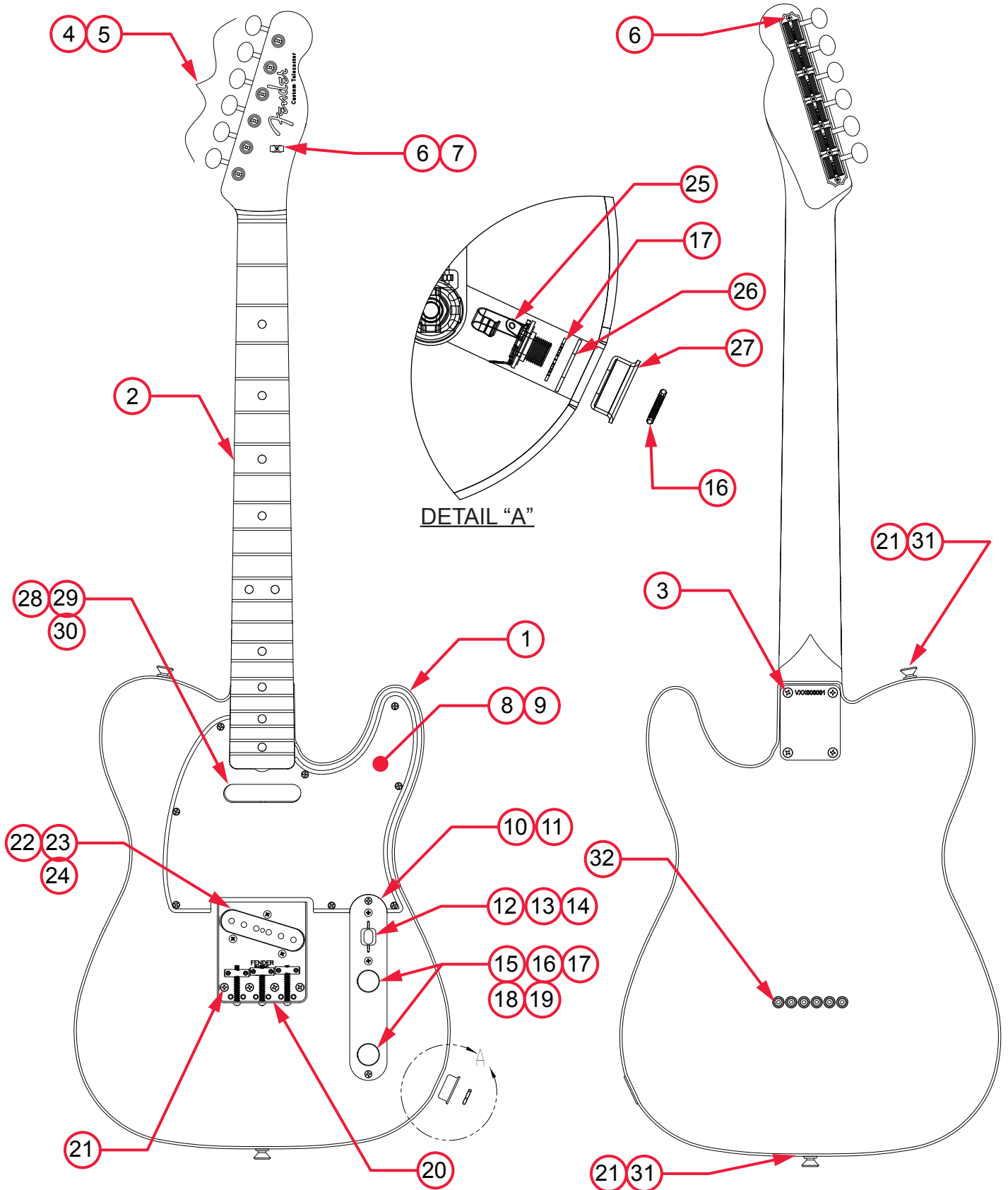


AMERICAN ORIGINAL 60'S TELECASTER (0110140XXX)

PARTS LAYOUT



AMERICAN ORIGINAL 60'S TELECASTER (0110140XXX)

PARTS LIST

REF#	DESCRIPTION	PART NUMBER
1	BODY AM ORIGINAL 60'S TELE 3TSB	7711115500
1	BODY AM ORIGINAL 60'S TELE FRD	7711116540
1	BODY AM ORIGINAL 60'S TELE LPB	7711116502
2	NECK ASSY AM ORIGINAL 60'S TELE RW	7710902000
3	SCREWS SMA 8 X 1-3/4 OHP NI	0015636049
4	KEY GTR NI FENDER LOGO SET	0091059060
5	BUSHING STRING POST VINT	0994946000
6	SCREW SMA 3 X 3/8 RHP STL NI	0011357049
7	VINTAGE STRING TREE KIT	0992083000
8	SCREWS SMA 4 X 1/2 OHP NI	0015578049
9	PICKGUARD 64 TELE VINT E/B/E	0094218049
10	PLATE CONTROL TELE VINT CRS CHRM	0093607000
11	SCREWS WD 5 X 5/8 OHP STL NI	0015602049
12	SWITCH 3-WAY LEVER	0038993049
13	SCREW M 6-32 X 3/8 RHP NI	0015800049
14	KNOB SWITCH TELE TOP HAT	0994937000
15	KNOBS KNURLED CHROME	0991366000
16	NUT HEX 3/8-32 X 3/32 TK NI	0016352049
17	WASHER LOCK INTL 3/8 X .687	0016436049
18	CONTROL 250K 10% AUDIO METAL	0990831000
19	CAP CERAMIC DISC .05µF 50V	0094251049
20	BRIDGE ASSY 2018 AM VINT 60'S TELE	7711293000
20A	BRIDGE PLATE TELE PAT# C/S	0058257000
20B	BRIDGE SECTION VINTAGE TELE NI	0094037000
20C	SPRING COMPRESSION 1-1/16 #144	0018689049
20D	SCREW ST 6-32 X 3/8 OVPT SL NI	0094038000
20E	SCREW ST 6-32 X 7/16 OVPT SL NI	0016105049
20F	SCREW M 6-32 X 1-1/4 RHP NI	0015834049
21	SCREW WD 6 X 1 OHP NI	0037952049
22	PICKUP ASSY 64 TELE BRIDGE	0094008000
23	SCREWS M 6-32 X 5/8 RHP STL NI	0015800049
24	TUBING LATEX CUT .375 X 1/8ID X 1/4OD	0036878000
25	JACK PHONE OPEN CIRCT 11	0021956049
26	RETAINER JACK NI	0010355069
27	FERRULE JACK STD TELE CHROME	0021452000
28	PICKUP ASSY 64 TELE NECK	0094009000
29	TUBING LATEX CUT .550 x 1/8	0039410000
30	SCREWS WD 3x1 RHP STL NI	0016295049

*= NOT PICTURED IN DIAGRAM



AMERICAN ORIGINAL 60'S TELECASTER (0110140XXX)

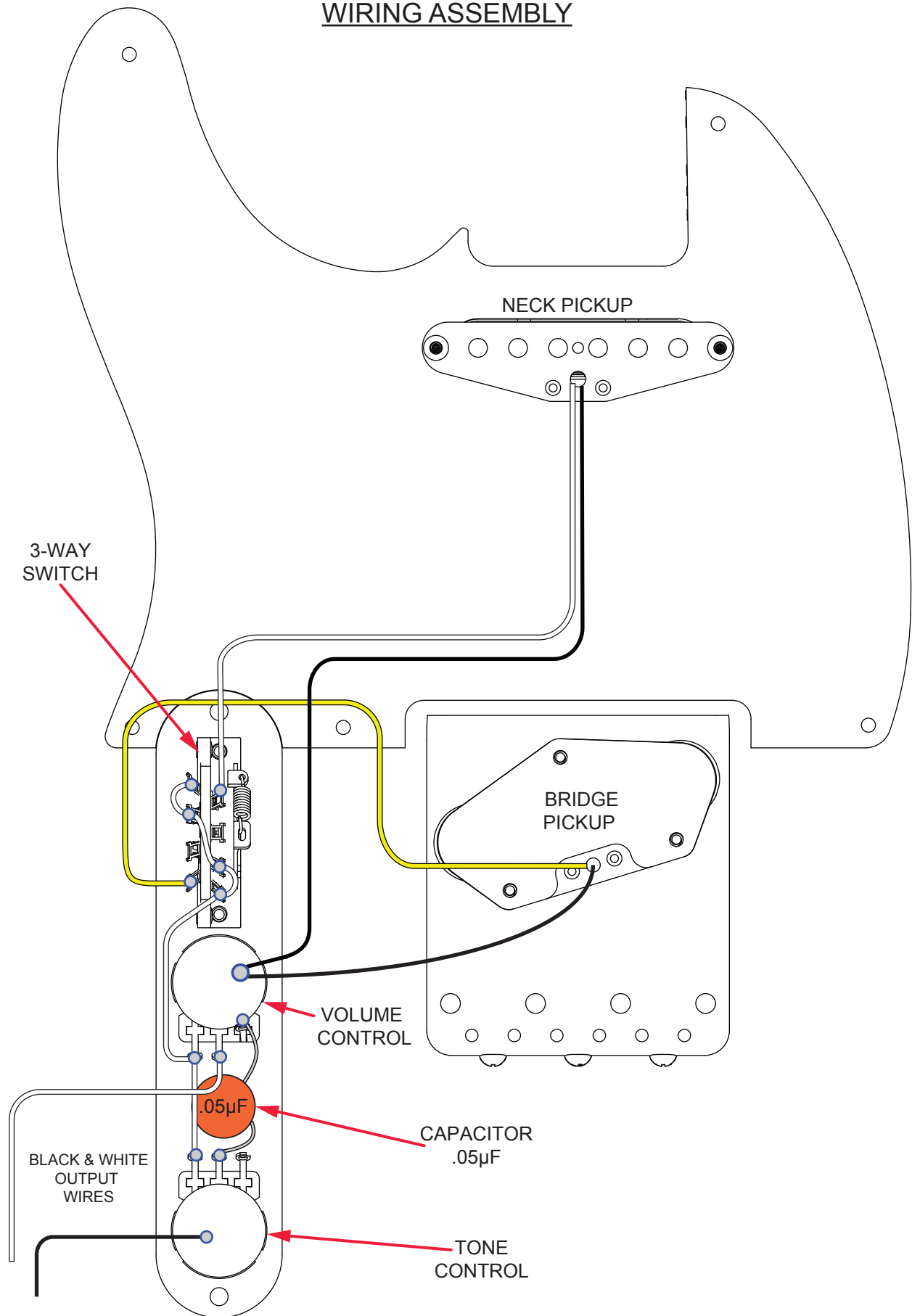
REF#	DESCRIPTION	PART NUMBER
31	STRAP BUTTONS NI .156	0994915000
32	FERRULES STRING RETAINER NI	0994918000
*	CASE STRAT/TELE BLACK NO C/S LOGO	0068102011

*= NOT PICTURED IN DIAGRAM



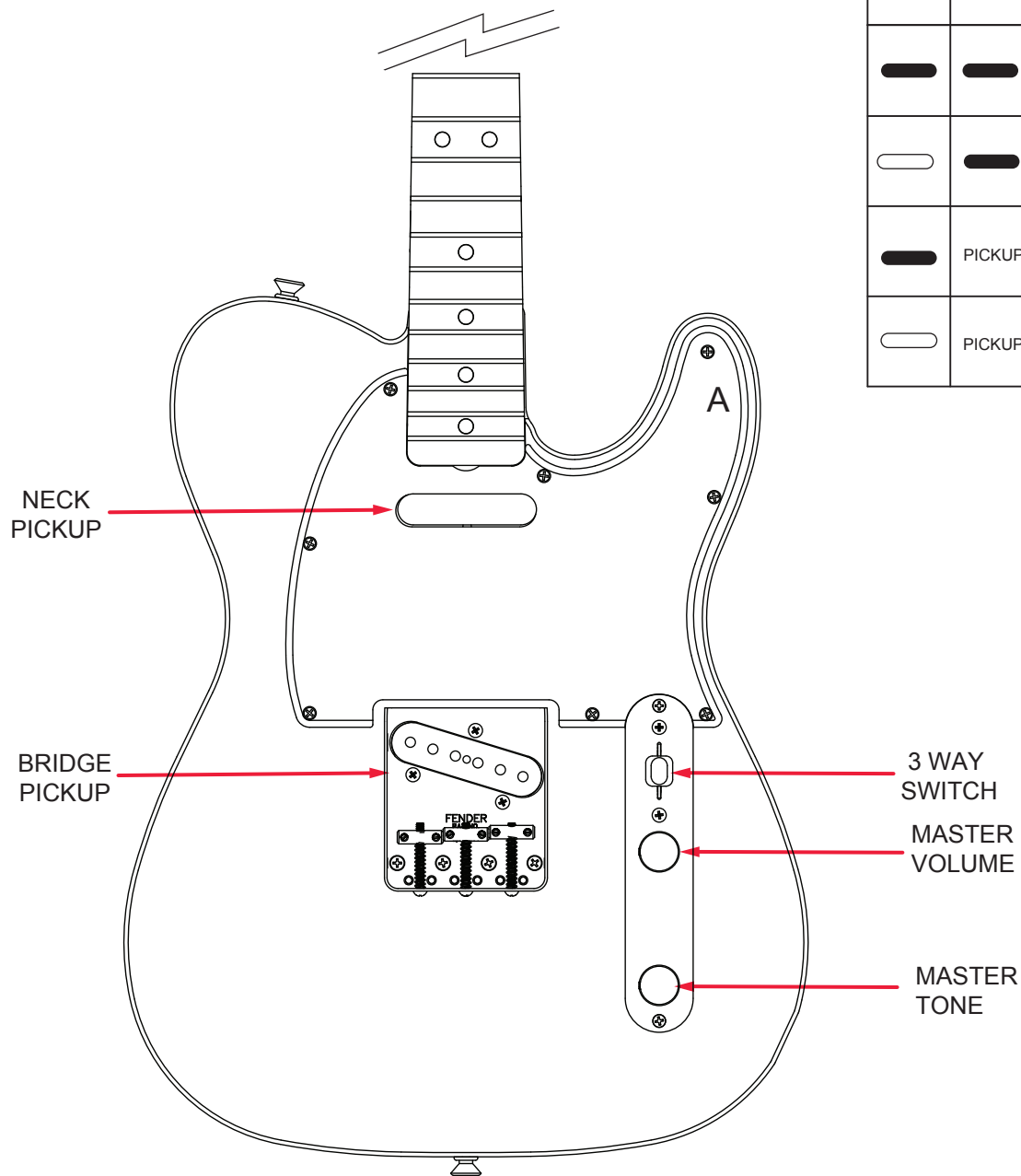
AMERICAN ORIGINAL 60'S TELECASTER (0110140XXX)

WIRING ASSEMBLY



AMERICAN ORIGINAL 60'S TELECASTER (0110140XXX)

SWITCH AND CONTROL FUNCTION

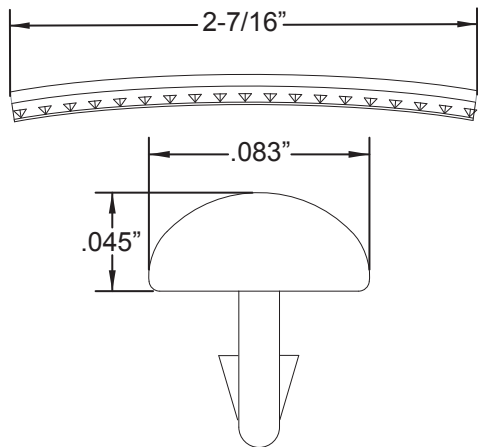


3 WAY SWITCH POSITION			
			← 3 WAY SWITCH POSITION
			← NECK PICKUP
			← BRIDGE PICKUP
	PICKUP IS ON	INDICATES POSITION OF 3 WAY SWITCH 	
	PICKUP IS OFF		

AMERICAN ORIGINAL 60'S TELECASTER (0110140XXX)

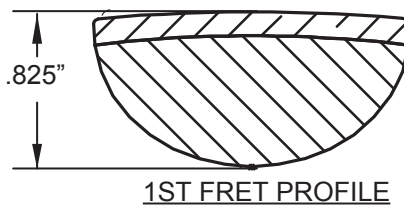
ADDITIONAL SPECIFICATION DETAIL

FRET SIZE: VINTAGE
(FRET DIMENSIONS ARE BEFORE INSTALLATION)

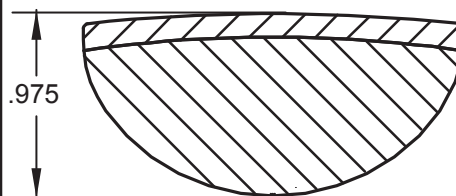


PLEASE NOTE: AS EACH NECK IS SANDED & FINISHED BY HAND, THICKNESS DIMENSIONS MAY VARY SLIGHTLY FROM THOSE SHOWN.

NECK PROFILE: VINTAGE "U" SHAPE

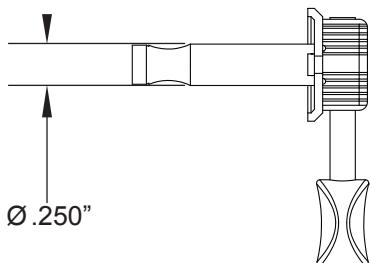


1ST FRET PROFILE

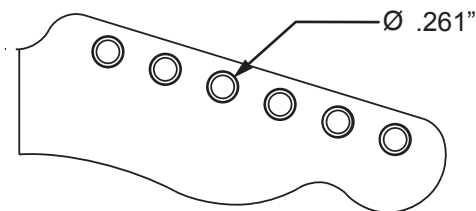


12TH FRET PROFILE

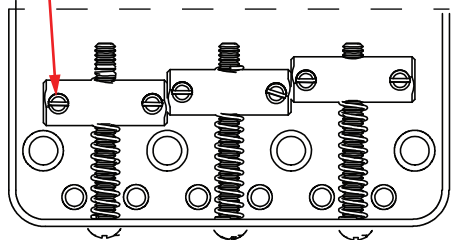
STAGGERED TUNING MACHINE SET W/HDWR P/N 0992074000
OUTER SHAFT DIAMETER .250"



TUNING MACHINE THRU-HOLE
INNER DIAMETER .261"



SLOTTED SET SCREW

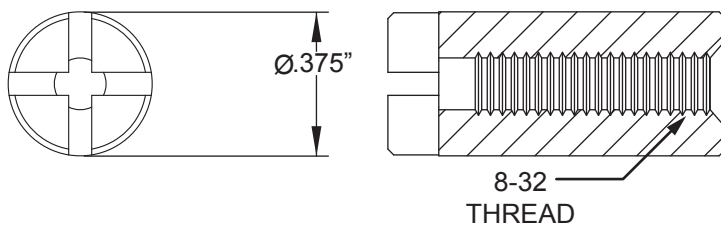


SADDLE HEIGHT SET SCREWS SLOTTED

TALL: P/N 0016105049

SHORT: P/N 0094038000

TRUSS ROD NUT P/N 0058171000



LOGO: 60'S CUSTOM TELE
APPLIED OVER FINISH



PICKUP SPECIFICATIONS

POSITION	MAGNETS	DC RESISTANCE	POLARITY
NECK	ALNICO 5 UNBEVELED	6.6 - 8.1KΩ	NORTH
BRIDGE	ALNICO 5 UNBEVELED	5.4 - 6.6KΩ	NORTH