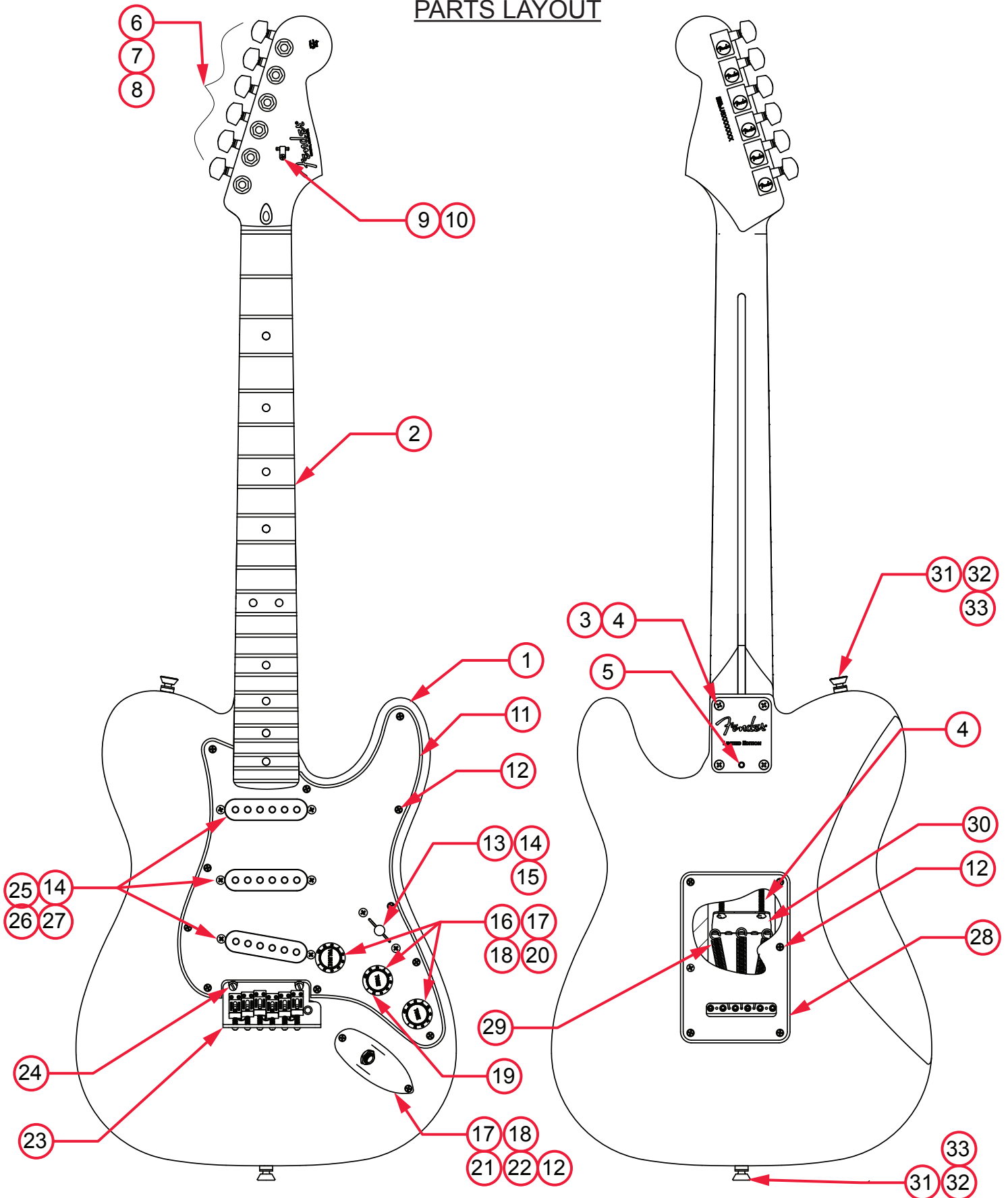


LIMITED EDITION STRAT-TELE HYBRID (0176032XXX)

PARTS LAYOUT



LIMITED EDITION STRAT-TELE HYBRID (0176032XXX)

PARTS LIST

REF#	DESCRIPTION	PART NUMBER
1	BODY STRAT-TELE HYBRID 2TSB	7712045503
2	NECK ASSY STRAT-TELE HYBRID MPL	7712092000
3	NECK PLATE LTD ED ALUM CHROME W/TILT	7711588000
4	SCREW SMA 8 X 1-3/4 OHP NI	0015636049
5	SET SCREW 1/4-20 X 3/8 OP NI HEX	0031571000
6	KEYS 2 PIN MOUNT SET W/HARDWARE	0990820100
7	KEY WASHERS	0053106049
8	KEY BUSHINGS	0058820049
9	STRING TREE W/HARDWARE	0994911000
10	SCREW SMAB 3 X 3/8 RHP STL NI	0011357049
11	PICKGUARD STRAT-TELE HYBRID MG/BLK/MG	7712049000
12	SCREW SMAB 4 X 1/2 OHP NI	0015578049
13	5-WAY SELECTOR SWITCH	0038929049
14	SCREW MA 6-32 X 5/8 OHP NI	0015776049
15	KNOB PICKUP SWITCH VINT AGED WHITE	0994938000
16	CONTROL 250K 10% TPR SPLIT	0990830000
17	NUT HEX 3/8-32 X 3/32	0016352049
18	WASHER LCK INTNL 3/8 X 500 X .02 NI	0022384049
19	CAPACITOR CERAMIC DISC .01MFD 50V	0094393000
20	KNOBS STRAT 1-VOL 2-TONE AGED WHITE	0991369000
21	FERRULE JACK CHROME	0991940000
22	JACK PHONE OPEN CIRCUIT 11	0021956049
23	BRIDGE ASSY AM PRO STRAT	7709950000
23A	BRIDGE PLATE TREM AM PRO STRAT CHROME	7709899000
23B	BLOCK TREMOLO AM DLX STRAT RH SILVER MET	0077090000
23C	BRIDGE SECTION ASSY NI AS STRAT SHORT	0075123101
23D	BRIDGE SECTION ASSY NI AS STRAT TALL	0075123102
23E	SPRING BRIDGE #1932	0019281049
23F	SCREW M 4-40 X 5/8 RHP NI	0015693049
23G	SCREW M 8-32 X 3/8 FHP NI	0019656049
23H	SPRING CLIP ULTRA	0036531000
23I	BUSHING NYL NAT .31 OD X .191 ID X .87 L	7710005000
23J	SET SCREW 10-32 X 3/16 HEX SKT FP BLX	0036615049
24	BRIDGE PIVOT POST ASSY	0093273000

*= NOT PICTURED IN DIAGRAM



LIMITED EDITION STRAT-TELE HYBRID (0176032XXX)

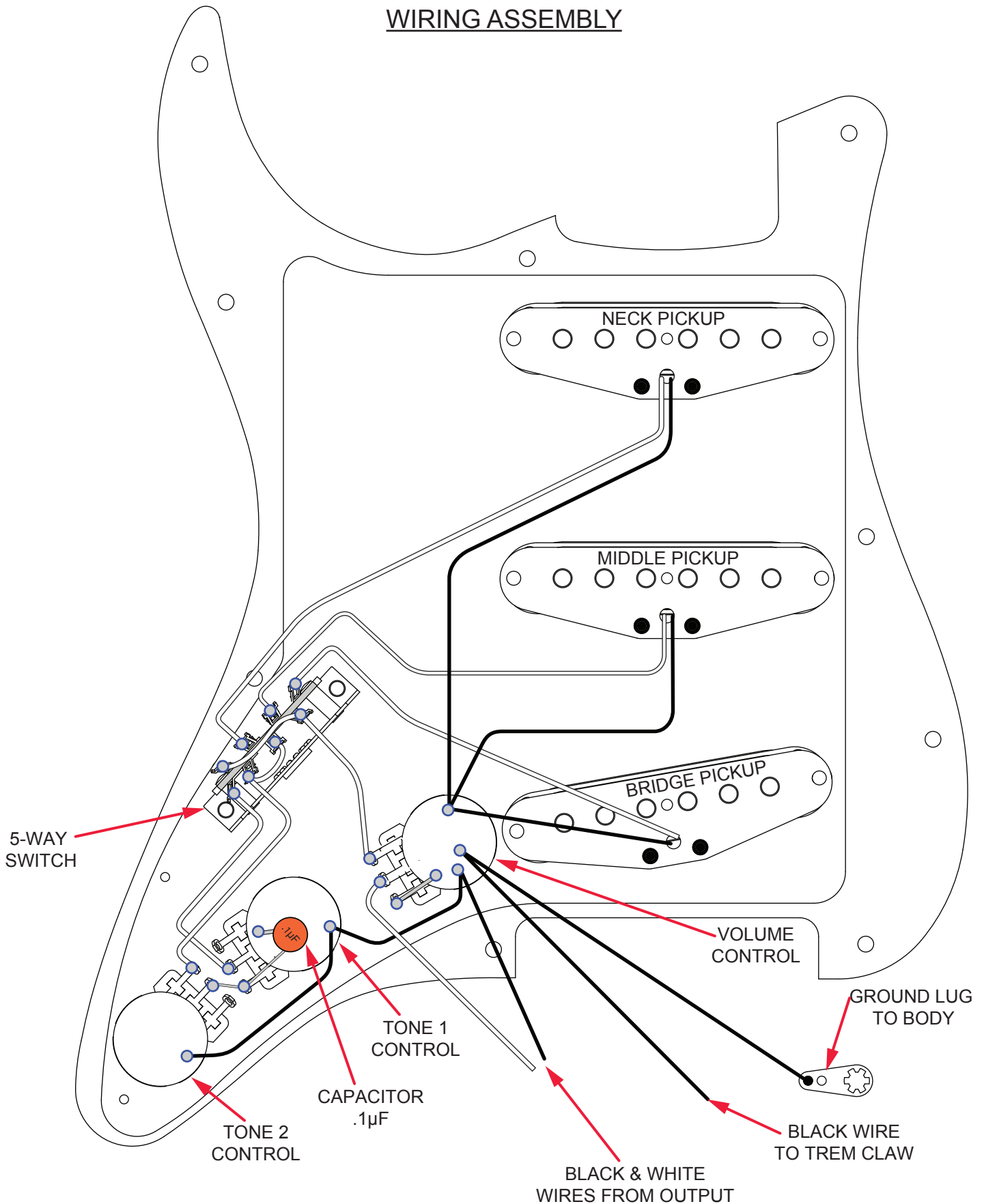
REF#	DESCRIPTION	PART NUMBER
25	PICKUP ASSY 69 STRAT AGED WHT	0073056000
26	PICKUP COVERS STRAT VINTAGE AGED WHITE	0053824049
27	TUBING LATEX CUT .300 X 1/8 ID X 1/4 OD	0994916000
28	BACK COVER STRAT STD W/SLOT RH MG/BLK/MG	0054029000
29	SPRING TREMOLO TENSION BLX	0018671049
30	TREM CLAW SPRING TENSION ZINC	0010272100
31	STRAP BUTTONS CHROME W/HARDWARE	0063267049
32	FELT WASHERS WHITE	0994930000
32	FELT WASHER BLACK	0994929000
33	WOOD SCREW 6 X 1 OHP NI	0016188049
*	CASE MOLDED AM ELITE GUITAR	7708545000
*	TRMOLO ARM AM PRO STRAT RH POLISHED SS	7709929000
*	TREMOLO ARM KNOB VINT AGED WHITE	0994933000
*	WRENCH HEX KEY 1/8 (TRUSS ROD ADJUSTMENT / TILT NECK ADJUSTMENT)	0023811049
*	WRENCH HEX KEY .050 (SADDLE HEIGHT ADJUSTMENT)	0018531049

*= NOT PICTURED IN DIAGRAM



LIMITED EDITION STRAT-TELE HYBRID (0176032XXX)

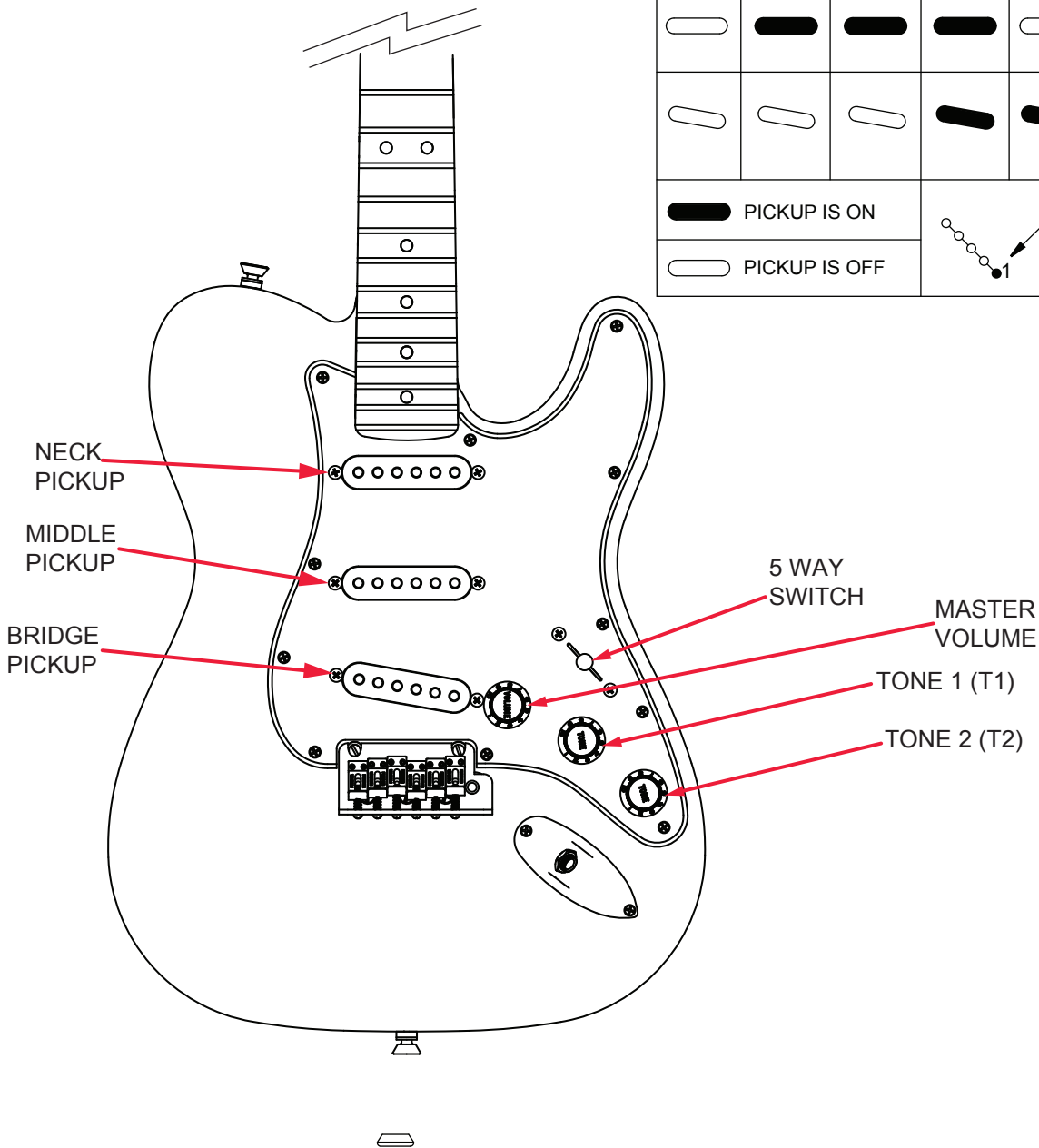
WIRING ASSEMBLY



LIMITED EDITION STRAT-TELE HYBRID (0176032XXX)

SWITCH AND CONTROL FUNCTION

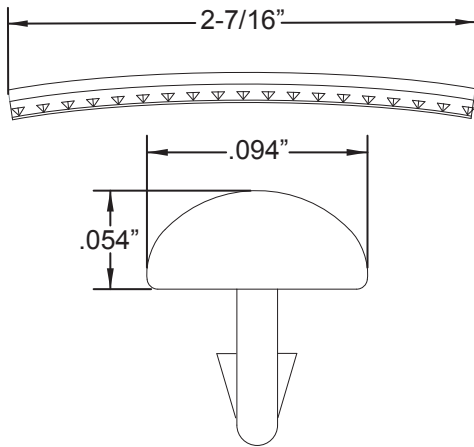
5 WAY SWITCH POSITION					
T1	T1 & T2	T2	T2	T2	← CONTROL
					← NECK PICKUP
					← MIDDLE PICKUP
					← BRIDGE PICKUP
PICKUP IS ON	PICKUP IS OFF INDICATES POSITION OF 5 WAY SWITCH				
PICKUP IS OFF					



LIMITED EDITION STRAT-TELE HYBRID (0176032XXX)

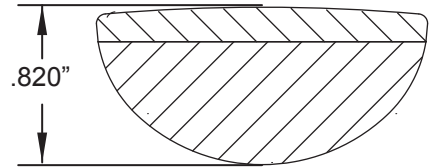
ADDITIONAL SPECIFICATION DETAIL

FRET SIZE: JUMBO NARROW
(FRET DIMENSIONS ARE BEFORE INSTALLATION)

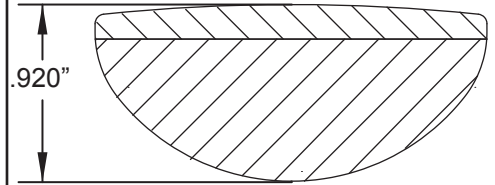


PLEASE NOTE: AS EACH NECK IS SANDED & FINISHED BY HAND, THICKNESS DIMENSIONS MAY VARY SLIGHTLY FROM THOSE SHOWN.

NECK PROFILE: MODERN DEEP "C"

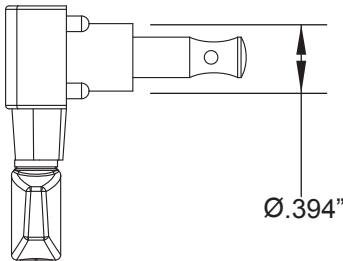


1ST FRET PROFILE

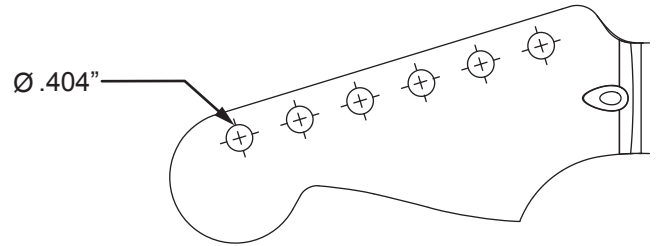


12TH FRET PROFILE

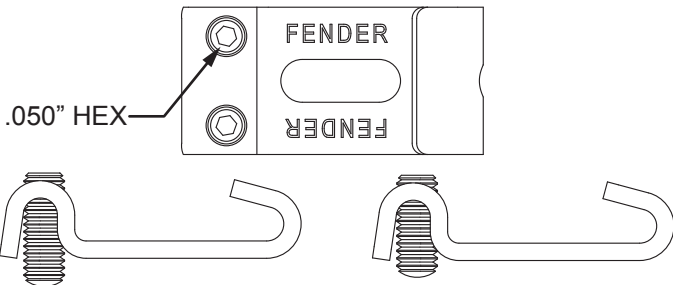
STAGGERED TUNING MACHINE SET W/HDWR P/N 0990820100
OUTER SHAFT DIAMETER .394"



TUNING MACHINE THRU-HOLE
INNER DIAMETER .404"

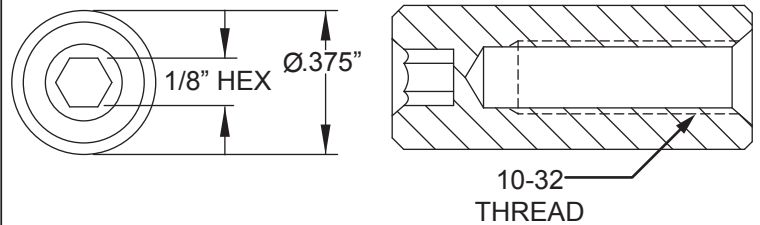


SADDLE HEIGHT ADJUSTMENT WRENCH:
.050" HEX KEY P/N 0018531049



SADDLE HEIGHT ADJUSTMENT SCREWS:
TALL: P/N 0075384000 SHORT: P/N 0075536000

TRUSS ROD NUT P/N 0994943000
TRUSS ROD ADJUSTMENT WRENCH:
1/8" HEX KEY P/N 0023811049



LOGO: STRAT-TELE HYBRID
APPLIED UNDER THE FINISH



PICKUP SPECIFICATIONS

POSITION	MAGNETS	DC RESISTANCE	POLARITY
NECK	ALNICO 5 UNBEVELED	5.2 - 5.6KΩ	SOUTH
MIDDLE	ALNICO 5 UNBEVELED	5.2 - 5.6KΩ	SOUTH
BRIDGE	ALNICO 5 UNBEVELED	5.2 - 5.6KΩ	SOUTH