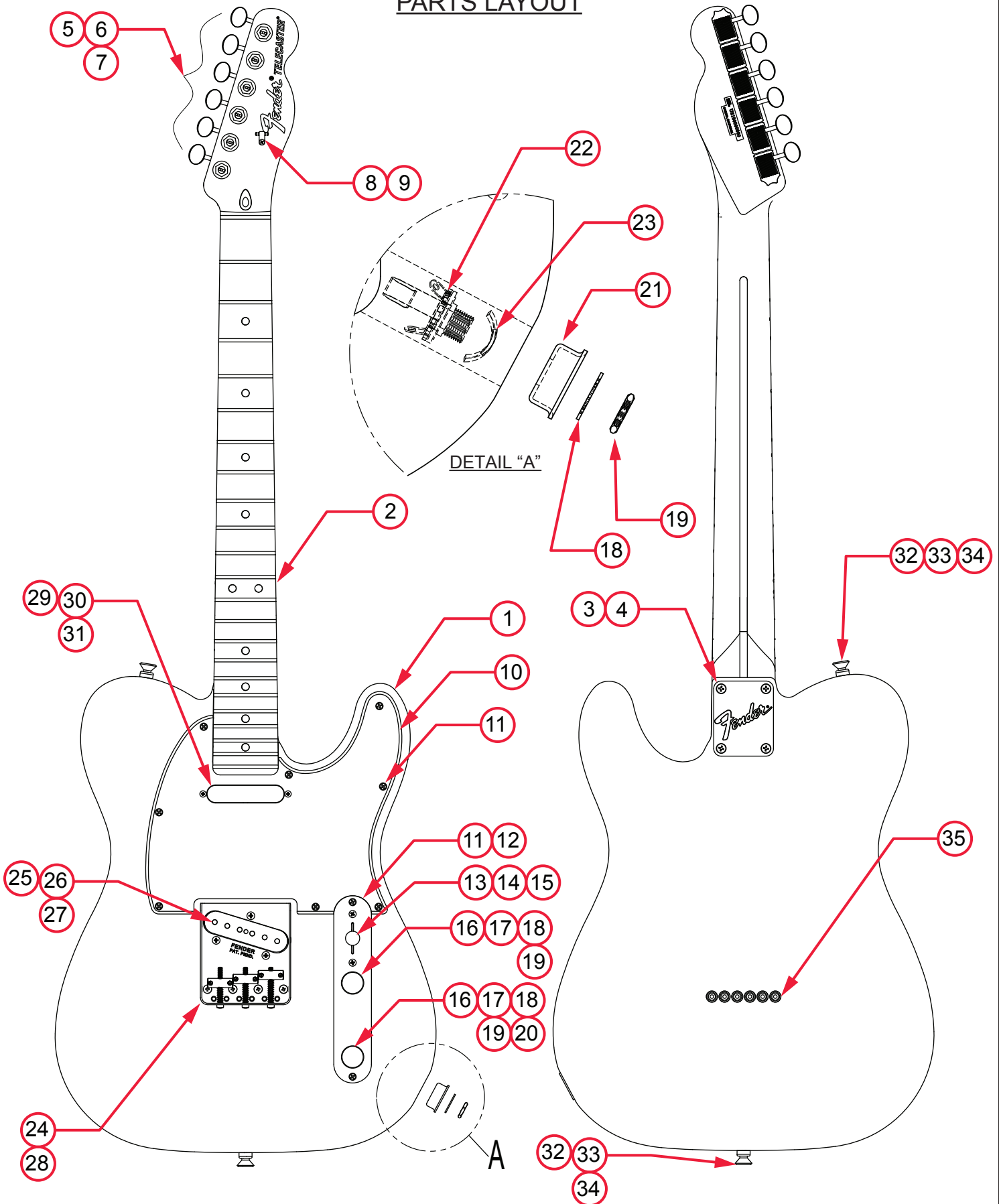


AMERICAN PERFORMER TELECASTER® (011511XXXX)

PARTS LAYOUT



AMERICAN PERFORMER TELECASTER® (011511XXXX)

PARTS LIST

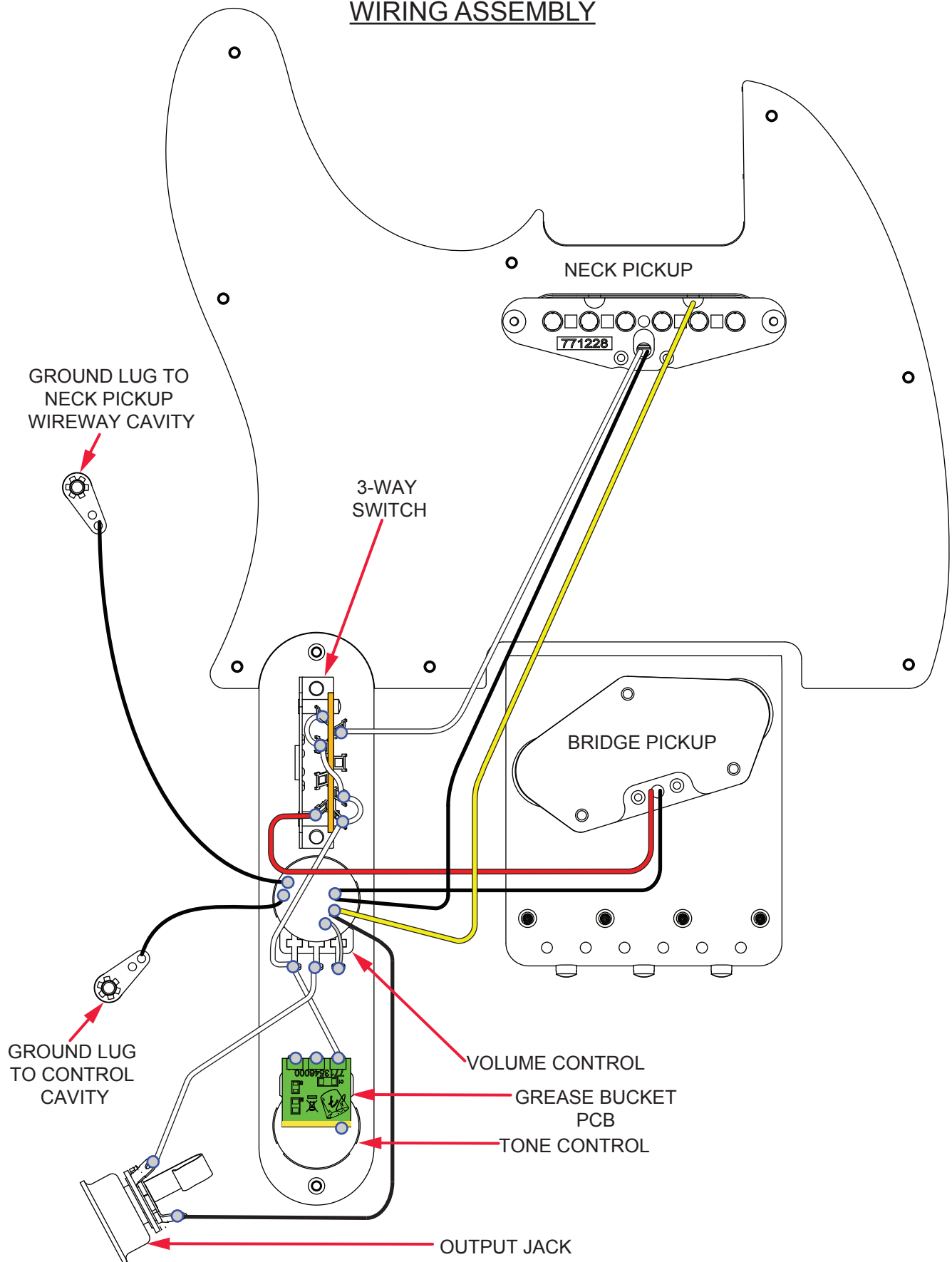
REF#	DESCRIPTION	PART NUMBER
1	BODY AM PERFORMER TELE GLOSS VWT	7713958541
1	BODY AM PERFORMER TELE GLOSS PENNY	7713958584
1	BODY AM PERFORMER TELE GLOSS HBST	7713958542
1	BODY AM PERFORMER TELE SATIN SNB	7714118572
2	NECK ASSY AM PERFORMER TELE MPL	7713151000
2	NECK ASSY AM PERFORMER TELE RW	7713150000
3	PLATE NECK STD SERIES LOGO NO TILT	0048691000
4	SCREW SMA8 X 1-3/4 OHP NI	0015636049
5	TUNNING KEYS MODERN VINTAGE SET	7713088000
6	WASHERS KEY	0053106049
7	BUSHINGS KEY	0058820049
8	STRING GUIDE TREE AM STD W/HDWR	0994911000
9	SCREW SMAB 3 X 3/8 RHP STL NI	0011357049
10	PICKGUARD AM STD TELE BLK	0053191000
10	PICKGUARD AM STD TELE WHT	0061385000
11	SCREW SMAB 4 X 1/2 OHP NI	0015578049
12	TELE CONTROL PLATE ALUM CHR	0093823000
13	SWITCH 3-WAY LEVER	0992041000
14	SCREW MACH 6-32 X 5/8 RH NI	0994925000
15	KNOB SWITCH VINT TELE	0994936000
16	KNOBS CONTROL ALUM CHR	0095799049
17	CONTROLS 250K 10% AUDIO METAL	0990831000
18	WASHER LOCK INTL 3/8 X .687	0016436049
19	NUT HEX 3/8-32 X 3/32 TK NI	0016352049
20	PCB ASSY GREASE BUCKET TONE CIRCUIT	7713549000
21	FERRULE JACK STD TELE CHROME	0021452000
22	JACK PHONE OPEN CIRCUIT 11	0021956049
23	RETAINER JACK NI PLT TELE	0010355069
24	BRIDGE ASSY AM PERFORMER TELE	7713385000
24A	BRIDGE PLATE VINT TELE	0054162049
24B	SCREWS MACH 6-32 X 1-1/4 FLHS NI	0018377049
24C	BRIDGE SECTIONS VINT TELE	0990843000
24D	SPRING COMPRESSION 1-1/16 #14	0018689049
24E	SET SCREWS 6-32 X 7/16 OVPT SL NI	0016105049
24F	SET SCREW 6-32 X 3/8 OVPT SL NI	0094038049
25	PICKUP ASSY AM PERFORMER TELE BRIDGE	7713384000

*= NOT PICTURED IN DIAGRAM



AMERICAN PERFORMER TELECASTER® (011511XXXX)

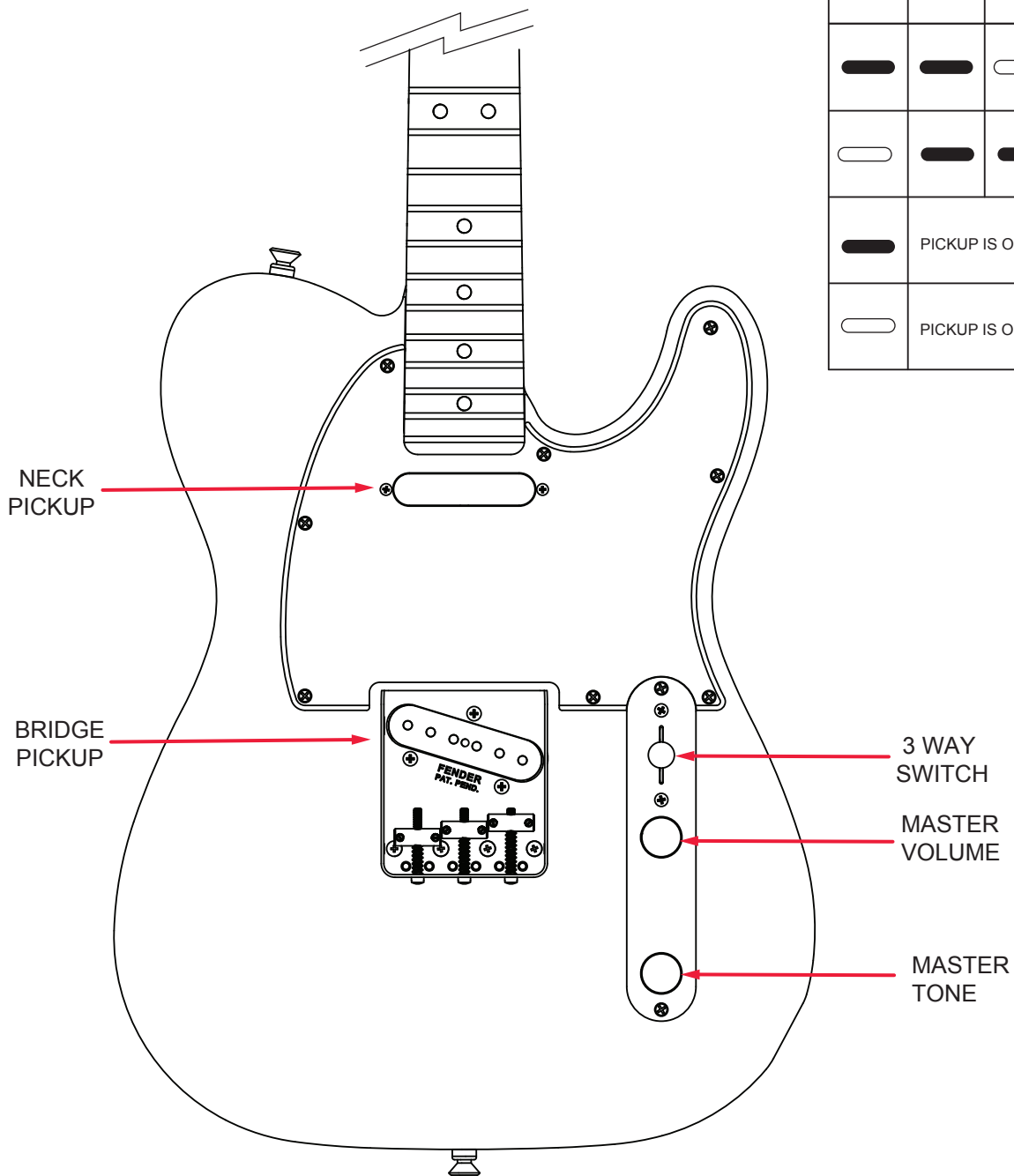
WIRING ASSEMBLY



AMERICAN PERFORMER TELECASTER® (011511XXXX)

SWITCH AND CONTROL FUNCTION

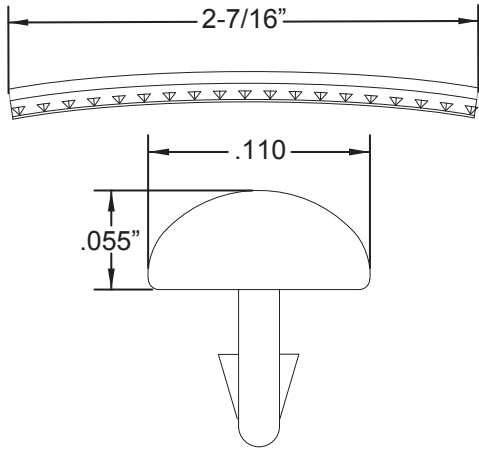
3 WAY SWITCH POSITION			
			← 3 WAY SWITCH POSITION
			← NECK PICKUP
			← BRIDGE PICKUP
	PICKUP IS ON	INDICATES POSITION OF 3 WAY SWITCH 	
	PICKUP IS OFF		



AMERICAN PERFORMER TELECASTER® (011511XXXX)

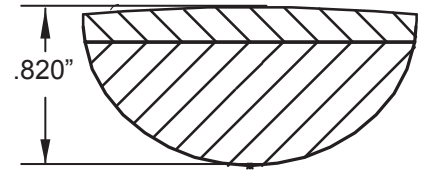
ADDITIONAL SPECIFICATION DETAIL

FRET SIZE: JUMBO
(FRET DIMENSIONS ARE BEFORE INSTALLATION)

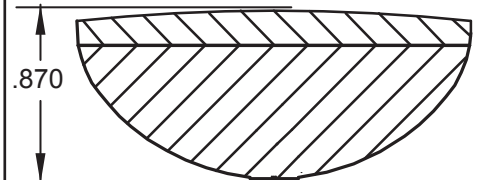


PLEASE NOTE: AS EACH NECK IS SANDED & FINISHED BY HAND, THICKNESS DIMENSIONS MAY VARY SLIGHTLY FROM THOSE SHOWN.

NECK PROFILE: MODERN "C"

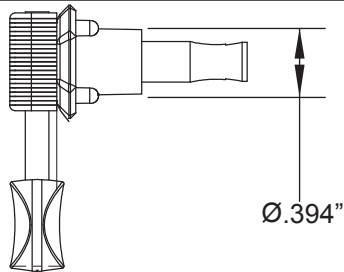


1ST FRET PROFILE

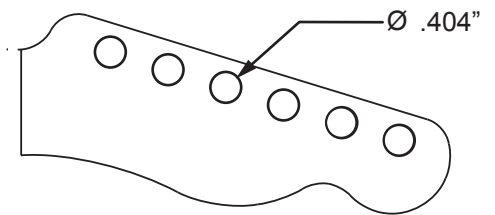


12TH FRET PROFILE

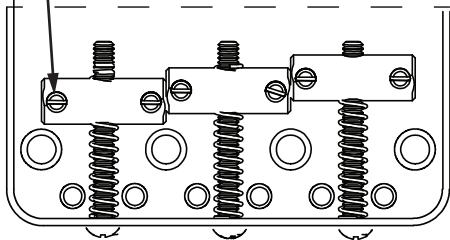
STAGGERED TUNING MACHINE SET P/N 7713088000
OUTER SHAFT DIAMETER .394"



TUNING MACHINE THRU-HOLE
INNER DIAMETER .404"

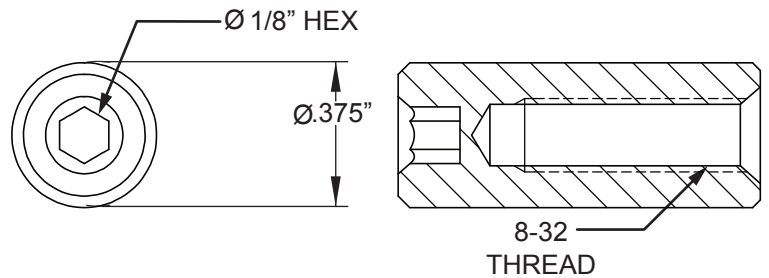


SLOTTED SET SCREW

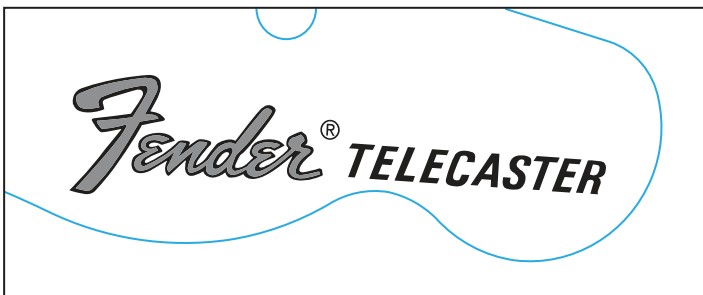


SADDLE HEIGHT SET SCREWS SLOTTED
TALL: P/N 0016105049 SHORT: P/N 0094038000

TRUSS ROD NUT: P/N 0994943000



LOGO: AM PERFORMER TELE
APPLIED UNDER THE FINISH



PICKUP SPECIFICATIONS

POSITION	MAGNETS	DC RESISTANCE	POLARITY
NECK	ALNICO 5 UNBEVELED	7.0 - 7.6KΩ	SOUTH
BRIDGE	ALNICO 4 BEVELED	7.6 - 8.2KΩ	NORTH