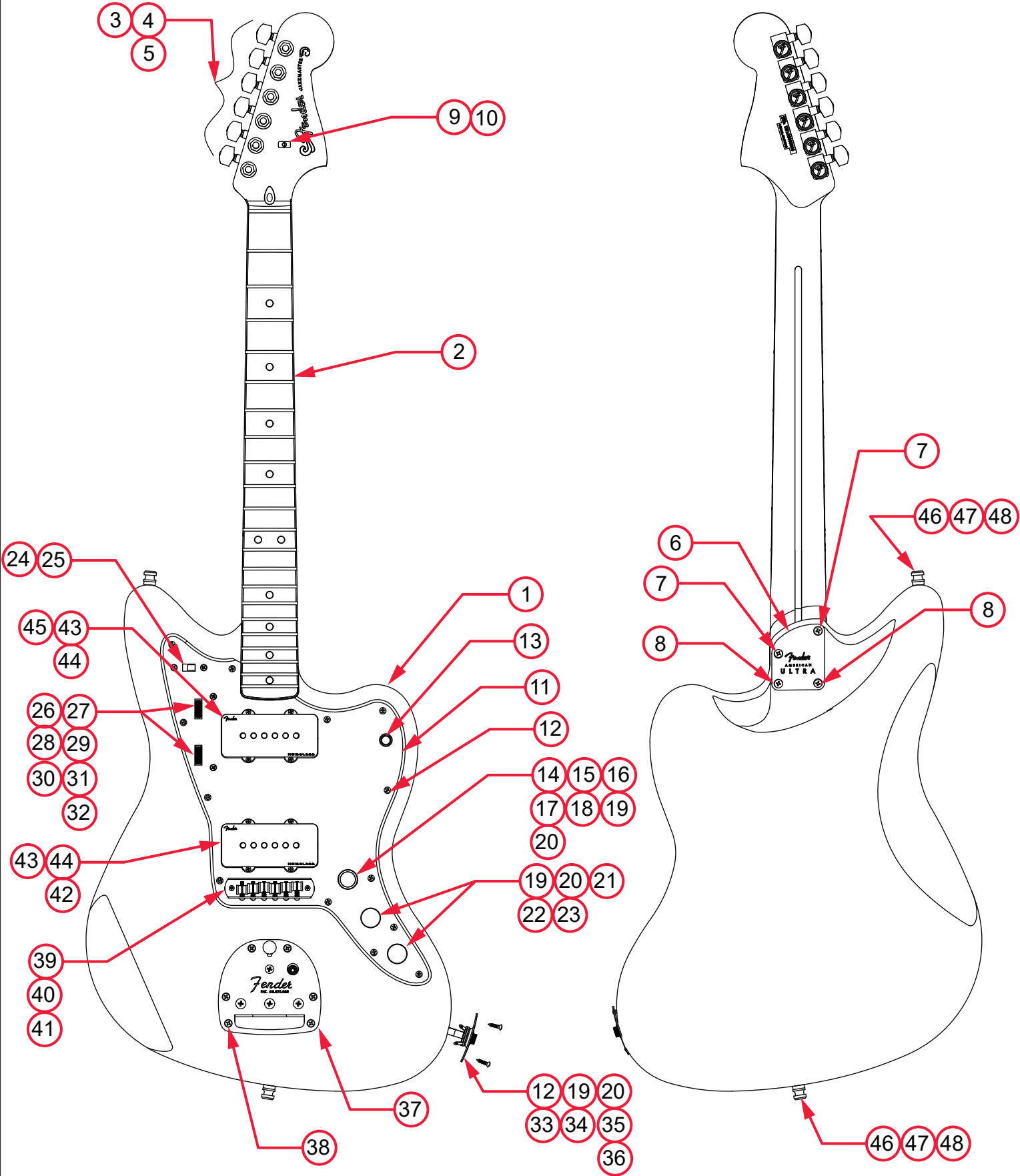


AMERICAN ULTRA JAZZMASTER (011805XXXX)

PARTS LAYOUT



AMERICAN ULTRA JAZZMASTER (011805XXXX)

PARTS LIST

REF#	DESCRIPTION	PART NUMBER
1	BODY AM ULTRA JAZZMASTER ULTRBST	7715517512
1	BODY AM ULTRA JAZZMASTER MBST	7715517532
1	BODY AM ULTRA JAZZMASTER PRB	7715638573
1	BODY AM ULTRA JAZZMASTER COB	7716378595
2	NECK ASSY AM ULTRA JAZZMASTER RW	7716144000
2	NECK ASSY AM ULTRA JAZZMASTER MPL	7715523000
3	KEY LOCKING SHORT 1,2,3 POLISH CHROME	0073114049
4	WASHERS KEY (6)	0053106049
5	BUSHINGS KEY (6)	0058820049
6	NECK PLATE GUITAR AM ULTRA CHROME RH	7715469000
7	SCREW SMA 8 X 1-1/4 OHP NI	0072900000
8	SCREW SMA 8 X 1-1/2 OHP NI	7716272000
9	STRING TREE AM ELITE GTR CHR	7708381000
10	SCREW SMA 2 X 9/16 FHP NI	0051621000
11	PICKGUARD AM ULTRA JAZZMASTER MG/BLK/MG	7716240000
11	PICKGUARD AM ULTRA JAZZMASTER BROWN SHELL	7716239000
11	PICKGUARD AM ULTRA JAZZMASTER AGED WHT PEARL/W/B/W	7716241000
11	PICKGUARD AM ULTRA JAZZMASTER B/W/B	7716237000
11	PICKGUARD AM ULTRA JAZZMASTER P/B/P	7716020000
11	PICKGUARD AM ULTRA JAZZMASTER WHITE PEARL/W/B/W	7716238000
12	SCREW 4 X 1/2 OHP NI	0015578049
13	SWITCH 3-POS TOGGLE AGED WHT KNOB W/HDWR	0053694049
14	SW/POT ASSY S-1 S50K .25B SOSH	0078979049
15	KNOB TELE/P BASS S-1 CHR W/CAP & SLEEVE	0059272049
16	COUPLING SLEEVE SOSH NYL	0059278049
17	2-PIN MALE LOCKING QUICK CONNECT B/W 4"	7717591000
18	PCB ASSY TREBLE BLEED AM PRO STRAT/TELE	7711092000
19	WASHER LOCK INTL 3/8 X .687	0016436049
20	NUT HEX 3/8-32 X 3/32 TK NI	0016352049
21	KNOB CONTROL ALUM CHR	0095799049
22	CONTROL 250K 10% TAPER NO LOAD SOSH	0078782000
23	CAP MPF RDL .022µF 250V 10%	0024832049
24	SWITCH SLIDE 4PDT PANEL MOUNT	7716744000
25	SCREW MACH 4-40 X 1/4 OHP NI	0015719049

*= NOT PICTURED IN DIAGRAM



AMERICAN ULTRA JAZZMASTER (011805XXXX)

REF#	DESCRIPTION	PART NUMBER
26	BRACKET CONTROL MTG JAZZMASTER	0054454049
27	CONTROL MINIPOT 1-MEG LIN W/NUT	0054457049
28	KNOB SIC PRESET CONTROL 1" X .25	0054455049
29	LOCK WASHER SPLIT #5 ZINC	7707983000
30	NUT HEX 4-40 X .188 X .063 STEEL ZINC	7716808000
31	WASHER LOCK INTERNAL TOOTH 1/4	0016451000
32	RESISTOR CF 1/4W 2.2M 5%	0025075001
33	FERRULE JACK RECESS FOOTBALL CHR	0050100049
34	WASHER FLAT 3/8 X .614 NI	0031153049
35	JACK PHONE OPEN CIRCUIT 11	0021956049
36	2-PI FEMALE LOCKING QUICK CONNECT B/W 6"	7717592000
37	TREMOLO ASSY AM PRO JAGUAR / JAZZMASTER	7710479000
37A	BASE PLATE TREMOLO JAGUAR / JAZZMASTER	0054467000
37B	GUIDE PLATE TREMOLO JAGUAR / JAZZMASTER	0054470000
37C	SCREW M 8-32 X 1/4 UHFP NI	0015891049
37D	FLOATING TREMOLO PLATE TAIL PIECE	0054468000
37E	TAILPIECE STIFFENER PLATE TREMOLO JAGUAR / JAZZMASTER	0054469000
37F	CHROME LOCK BUTTON TREMOLO	0054474000
37G	WAVE WASHER #6 .170 ID X .385 OD	0054476000
37H	SCREW M 8-32 X 1-1/4 PHP NI	0015966000
37I	TREMOLO ACTION SPRING .080 X 6 CO	0019307000
37J	SPRING PERCH TREMOLO	0024992000
37K	SCREW M 8-32 X 1/4 THP NI	0015891049
37L	SLEEVE TREMOLO LEVER AM PRO JAG/JAZZ NI	7710465000
37M	SPRING COMPRESSION .210X.575 BLK OXIDE	7710661000
37N	SCREW ST 1/4-28x1/8 FP BLX HEX	7710469000
38	SCREW SMAB 5 X 1 OHP NI	0015610049
39	BRIDGE ASSY AM PRO JAGUAR / JAZZMASTER	7709942000
39A	CHANNEL AND POST BRIDGE PLATE JAGUAR / JAZZMASTER	0054519000
39B	SCREW ST 4-40 X 1/2 OC CN PT	0056157049
39C	SCREW M 4-40 X 5/8 RHP NI	0015693049
39D	SPRING INTONATION ADJ 7 COIL	0056139000
39E	SADDLE E-E AM PRO JAG/JAZZ BRASS NI	7709941010
39F	SADDLE D-G DYNAMIC VIBRATO BRIDGE BRASS NI	0091085010
39G	SADDLE A-B DYNAMIC VIBRATO BRIDGE BRASS NI	0091086010
40	THIMBLE BRIDGE POST JAG/JAZZ	0054447049
41	SLEVE THIMBLE AM PRO JAG/JAZZ	7710508000

*= NOT PICTURED IN DIAGRAM



AMERICAN ULTRA JAZZMASTER (011805XXXX)

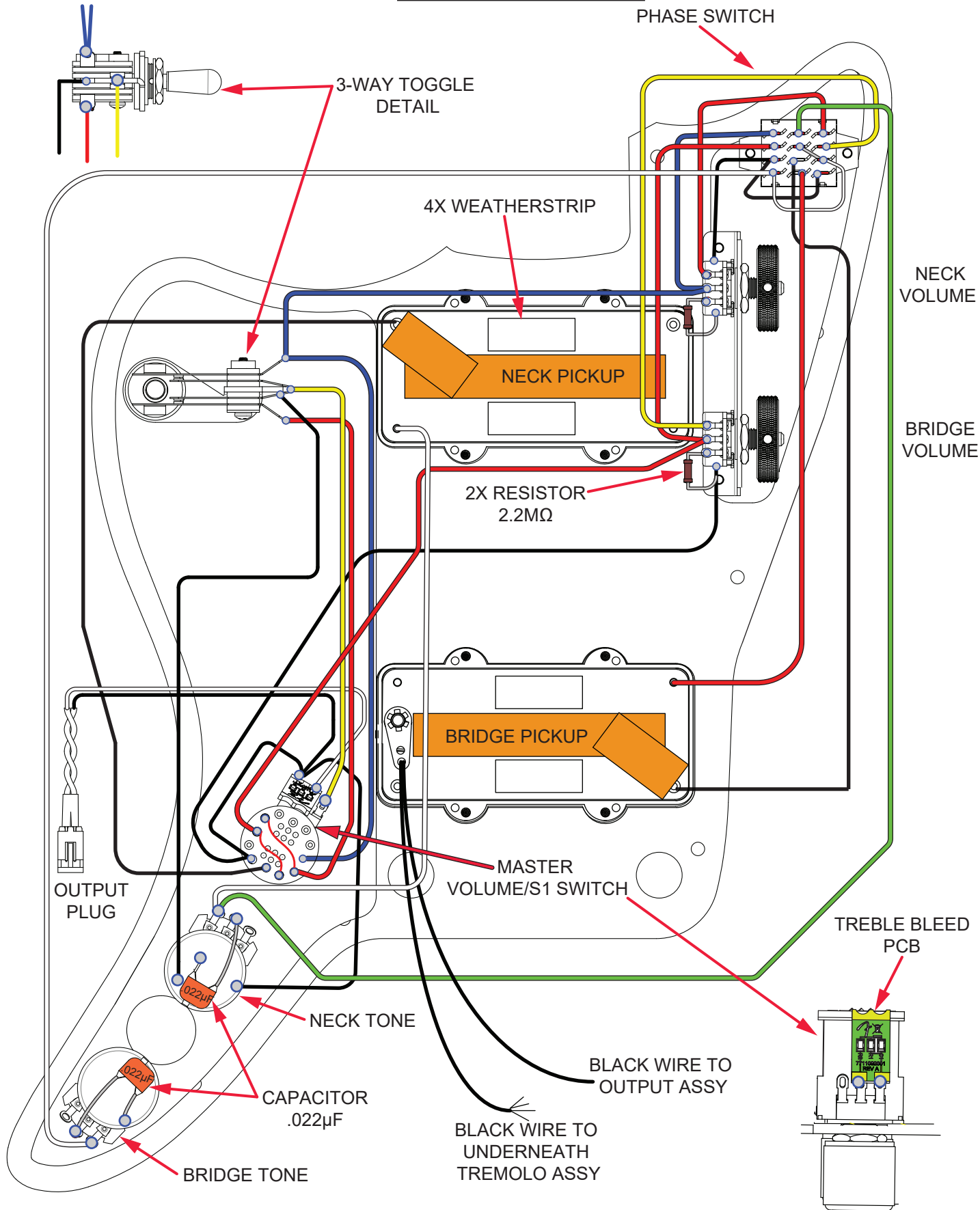
REF#	DESCRIPTION	PART NUMBER
42	PICKUP ASSY AM ULTRA JAZZMASTER BRIDGE	7715485000
43	WEATHERSTRIP 3/8 X 3/8 OPN CL RUBBER	0017333049
44	SCREW WOOD RND HD 3 X 1-1/4 NI	7711573000
45	PICKUP ASSY AM ULTRA JAZZMASTER NECK	7715484000
46	STRAP BUTTON CHROME	0063267049
47	FELT WASHERS WHITE	0994930000
47	FELT WASHERS BLACK	0994929000
48	SCREW WOOD 6 X 1 OHP NI	0016188049
*	CASE MOLDED AM PRO GTR JAG/JAZZ	7710544000
*	TREMOLO ARM AM PRO JAG/JAZZ POLISHED SS	7710405000
*	KNOB TREMOLO ARM VINTAGE WHT	0094281049v
*	WRENCH 1/8 HEX KEY (TRUSS ROD ADJUSTMENT / TILT NECK ADJUSTMENT)	0023811049
*	WRENCH .050 HEX KEY (BRIDGE HEIGHT ADJUSTMENT)	0018531049

*= NOT PICTURED IN DIAGRAM



AMERICAN ULTRA JAZZMASTER (011805XXXX)

WIRING ASSEMBLY

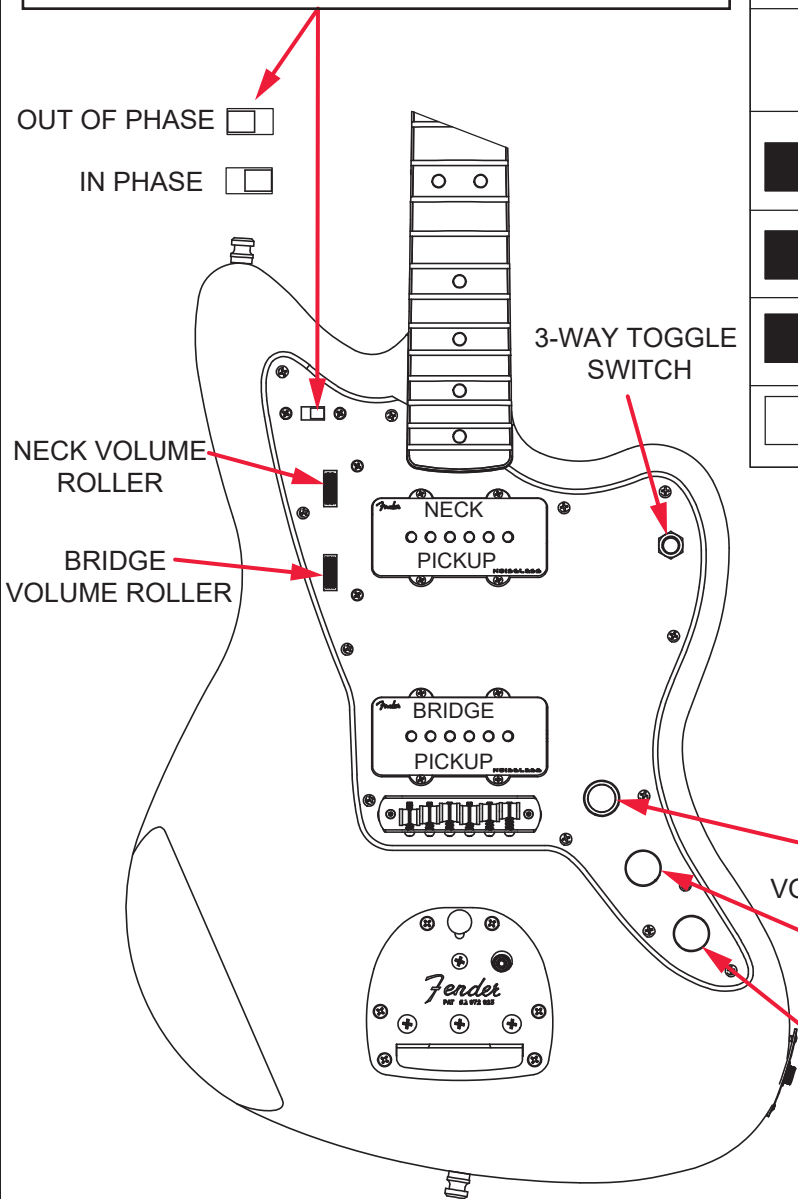


AMERICAN ULTRA JAZZMASTER (011805XXXX)

SWITCH AND CONTROL FUNCTION

PHASE SWITCH:
 IN "OUT OF PHASE" MODE THE NECK AND BRIDGE VOLUME ROLLERS ARE ENABLED.
 IN "IN PHASE" MODE THE ROLLERS ARE DISABLED.

OUT OF PHASE SOUND
 CAN ONLY BE HEARD WITH TOGGLE IN
 MIDDLE POSITION.



S-1 SWITCH IN UP POSITION				
			3-WAY SWITCH	PARALLEL
			NECK PICKUP	
			BRIDGE PICKUP	
S-1 SWITCH IN DOWN POSITION				
			3-WAY SWITCH	SERIES
			NECK PICKUP	
			BRIDGE PICKUP	
	PICKUP IS ON		INDICATES POSITION OF 3-WAY SWITCH	
	PICKUP IS OFF			

IF BOTH **SERIES** AND **OUT OF PHASE** MODES ARE ENGAGED, NECK AND BRIDGE VOLUME ROLLERS WILL BOTH WORK LIKE MASTER VOLUME CONTROLS

S-1 SWITCH DOWN:
 TOGGLE SWITCH SELECTS WHICH TONE CONTROL IS FUNCTIONAL. BOTH PICKUPS ALWAYS ON AND WIRED IN SERIES.

S-1 SWITCH UP:
 ALL CONTROLS FUNCTION AS LABELED. SWITCH POSITION 2 PLACES THE NECK AND BRIDGE PICKUPS IN PARALLEL. THIS CONTINUES TO BE TRUE IN "OUT OF PHASE" MODE.

MASTER VOLUME/S1 SWITCH

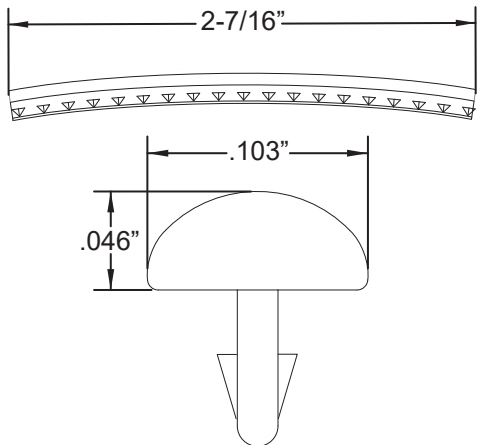
NECK TONE

BRIDGE TONE

AMERICAN ULTRA JAZZMASTER (011805XXXX)

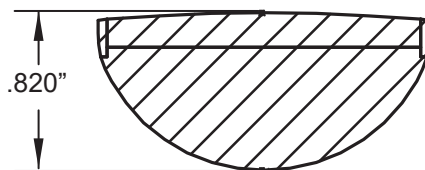
ADDITIONAL SPECIFICATION DETAIL

FRET SIZE: MEDIUM JUMBO
(FRET DIMENSIONS ARE BEFORE INSTALLATION)

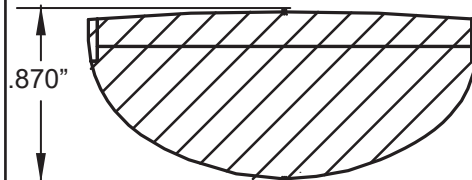


PLEASE NOTE: AS EACH NECK IS SANDED & FINISHED BY HAND, THICKNESS DIMENSIONS MAY VARY SLIGHTLY FROM THOSE SHOWN.

NECK PROFILE: ULTRA MODERN "D"

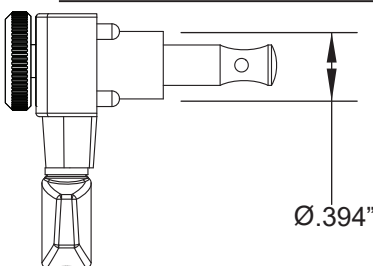


1ST FRET PROFILE

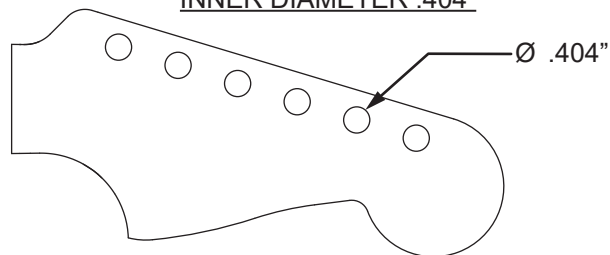


12TH FRET PROFILE

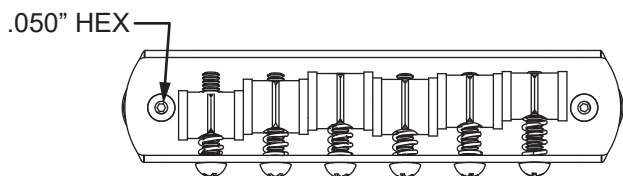
TUNING MACHINE P/N 0073114049
OUTER SHAFT DIAMETER .394"



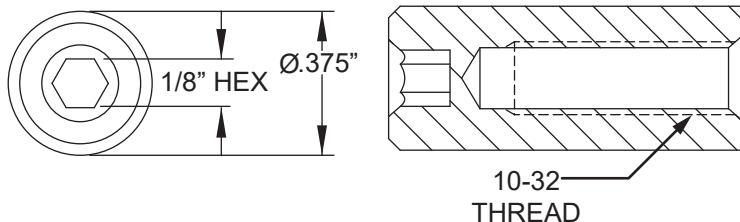
TUNING MACHINE THRU-HOLE
INNER DIAMETER .404"



BRIDGE HEIGHT ADJUSTMENT WRENCH:
.050" HEX KEY P/N 0018531049



TRUSS ROD NUT P/N 0994943000
TRUSS ROD ADJUSTMENT WRENCH:
1/8" HEX KEY P/N 0023811049



LOGO: AMERICAN ULTRA JAZZMASTER
APPLIED UNDER FINISH



PICKUP SPECIFICATIONS

POSITION	MAGNETS	DC RESISTANCE	POLARITY
NECK	ALNICO 5 BEVELED	13.7 - 14.3KΩ	NORTH
BRIDGE	ALNICO 5 BEVELED	20.4 - 21.0KΩ	NORTH