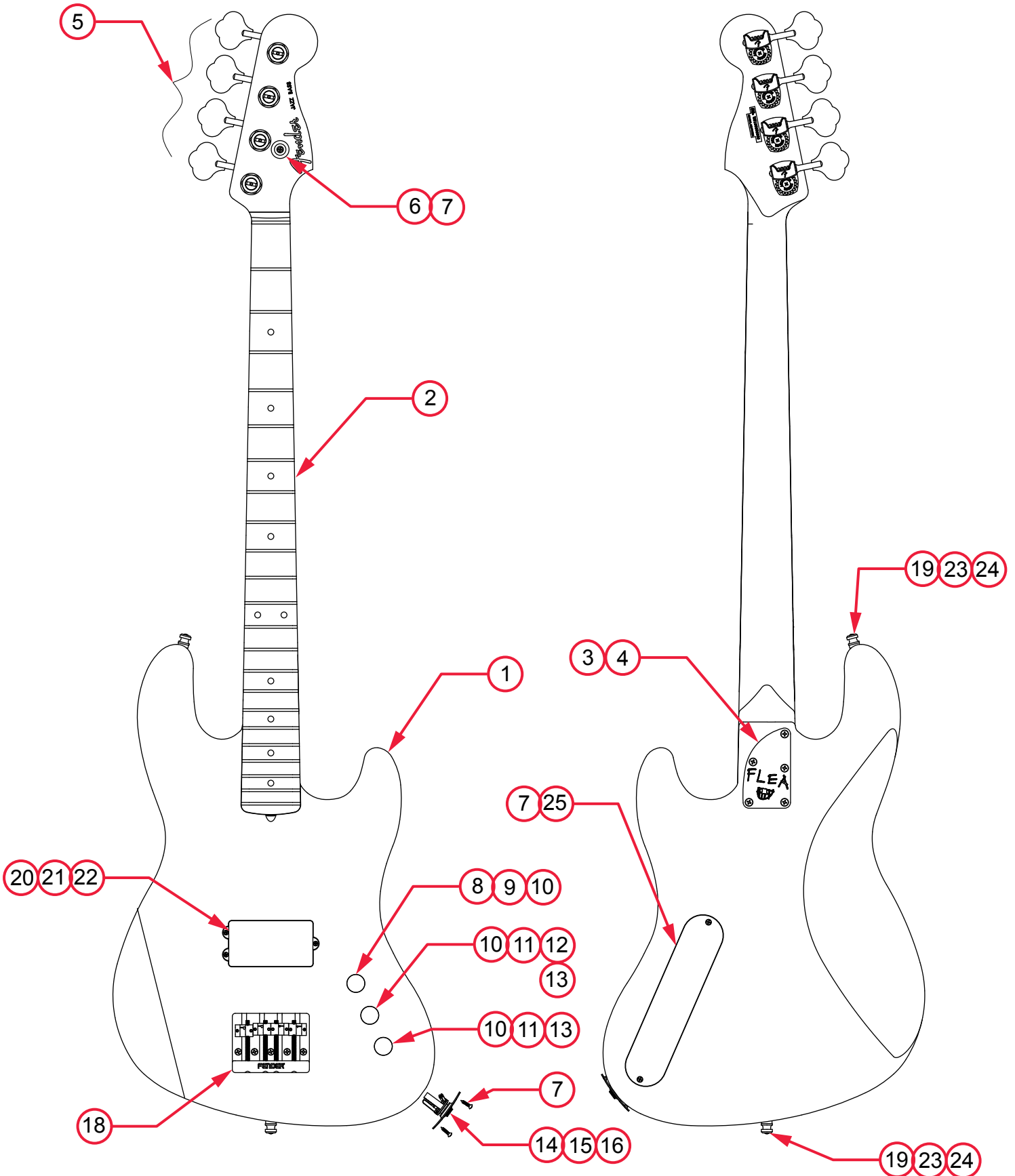


FLEA BASS II (0192602XXX)

PARTS LAYOUT



FLEA BASS II (0192602XXX)

PARTS LIST

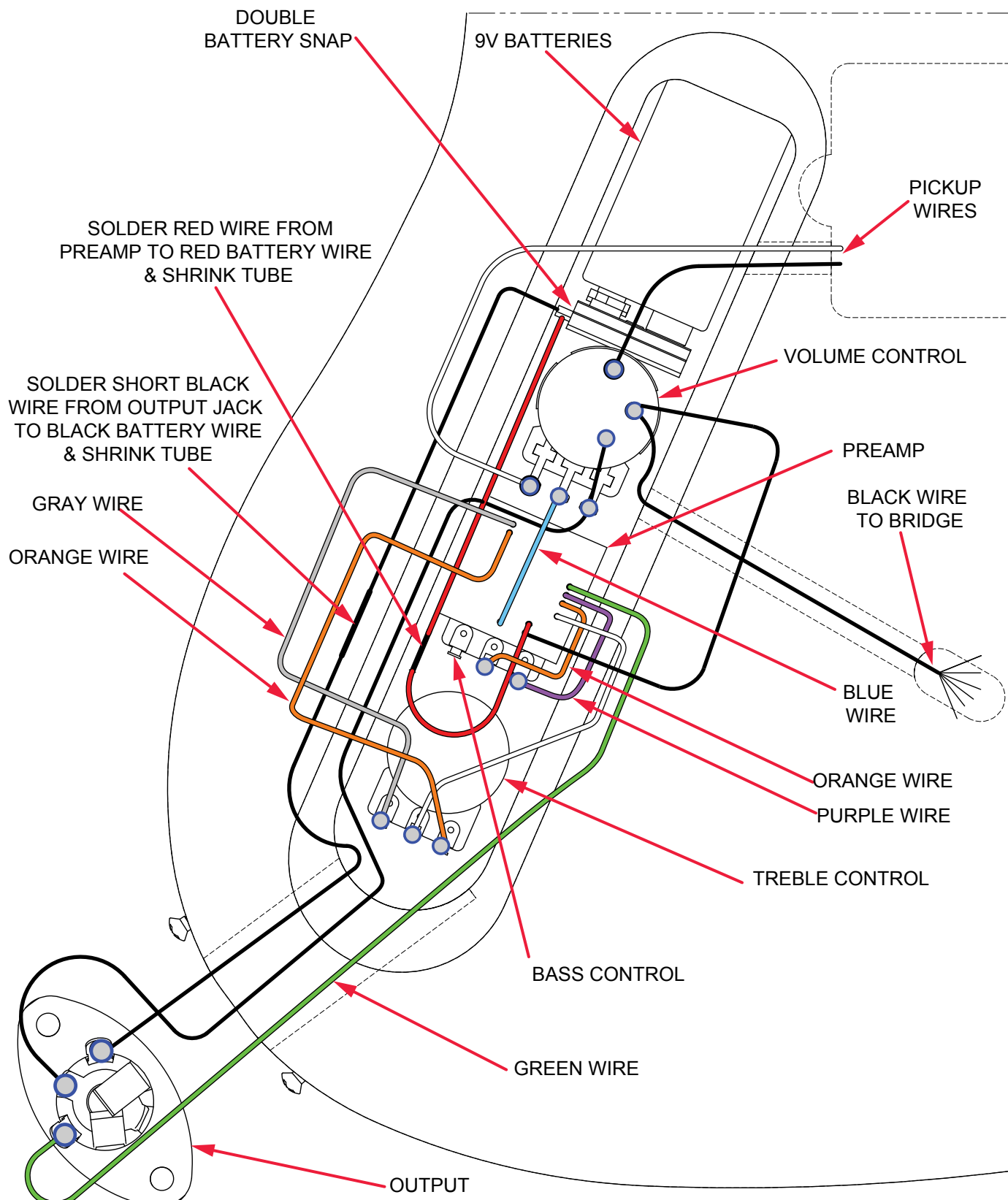
REF#	DESCRIPTION	PART NUMBER
1	BODY FLEA BASS II MATTE SHP	7713139528
1	BODY FLEA BASS II MATTE SILVER	7713139561
2	NECK ASSY FLEA BASS II MPL	7713138000
3	NECK PLATE FLEA BASS II	7714123000
4	SCREW SMA 8 X 1-3/4 OHP NI	0015636049
5	KEY BASS DLX NEW MOD TAPER LONG SET	0992006000
6	STRING GUIDE BASS BRASS CHROME	0079014000
7	SCREW SMAB 4 X 1/2 OHP NI	0015578049
8	CONTROL 250K SOLID SHAFT 3/8" W/HDWR	0053803000
9	WASHER LOCK INTERNAL 3/8 X .500 X .020	0022384049
10	KNOB CONTROL VINT TELE (2)	0992056000
11	POT SOLID SHAFT 25K AUDIO TAPER	7714157000
12	PREAMP BASS AGUILAR OBP-1	7713845000
13	WASHER INTL LOCK .035 X 3/8 NI	0056790000
14	FERRULE JACK RECESS FOOTBALL CHROME	0050100049
15	WASHER LOCKING INTL 3/8 X .687 X .035 NI	0016436049
16	JACK PHONE STEREO 12B W/HDWR	0013043049
17	ASSY DOUBLE BATTERY SNAP	0058775000
18	BRIDGE ASSY FENDER HIGH MASS BASS IV BRS SADDLES	0994408000
19	SCREW SMAB 5 X 1 OHP NI	0015610049
20	PICKUP ASSY FLEA BASS II	7713983000
21	WEATHERSTRIP 3/8 X 3/8 OP CL NEOPRENE	0017333049
22	SCREW WOOD #3 X 1-1/4 RHP STL NI	7711573000
23	STRAP BUTTONS ELITE/STD CHROME W/HDWR	0994914000
24	WASHER FELT WHITE	0994930000
25	BACK COVER FLEA SIG JAZZ BASS BLACK	7713140000
*	HEX KEY .050	0018531049
*	HEX KEY 3/16	7710885000
*	CASE G&G FLEA JAZZ BASS	7714209000

*= NOT PICTURED IN DIAGRAM

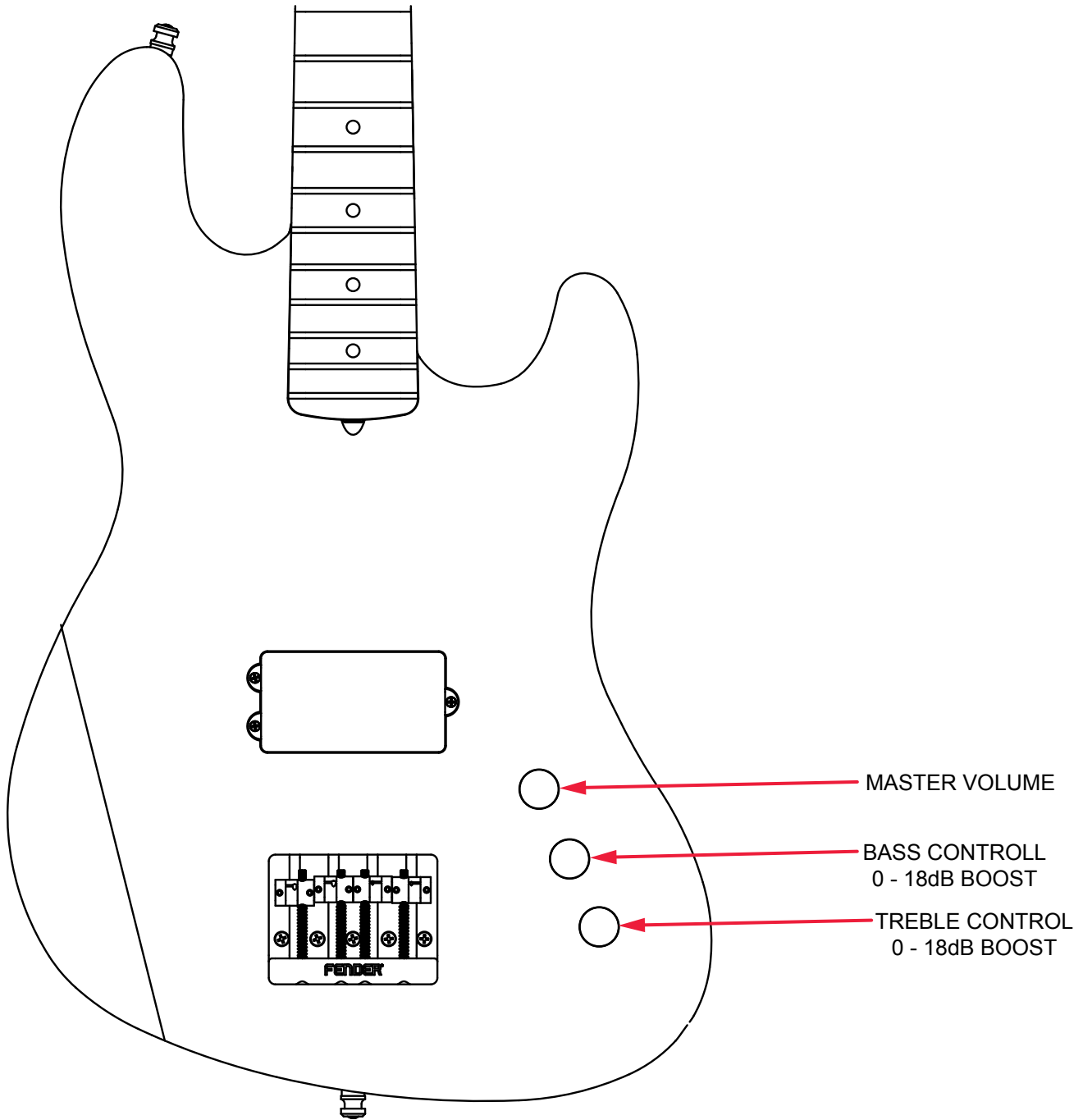


FLEA BASS II (0192602XXX)

WIRING ASSEMBLY



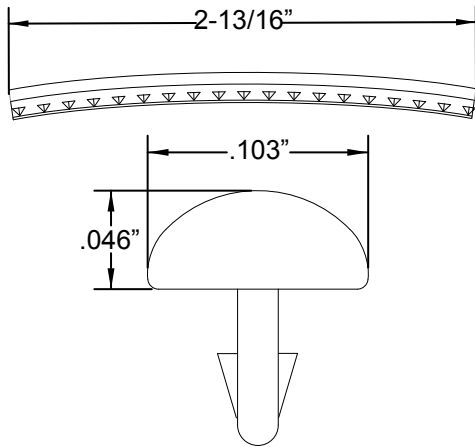
FLEA BASS II (0192602XXX)
SWITCH AND CONTROL FUNCTION



FLEA BASS II (0192602XXX)

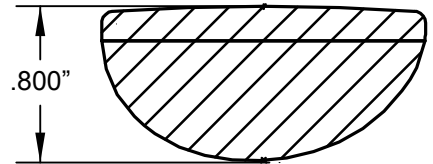
ADDITIONAL SPECIFICATION DETAIL

FRET SIZE: MEDIUM JUMBO
(FRET DIMENSIONS ARE BEFORE INSTALLATION)

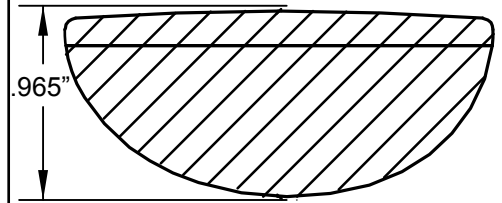


PLEASE NOTE: AS EACH NECK IS SANDED & FINISHED BY HAND, THICKNESS DIMENSIONS MAY VARY SLIGHTLY FROM THOSE SHOWN.

NECK PROFILE: FLEA SIG BASS

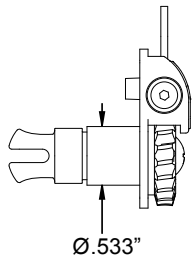


1ST FRET PROFILE

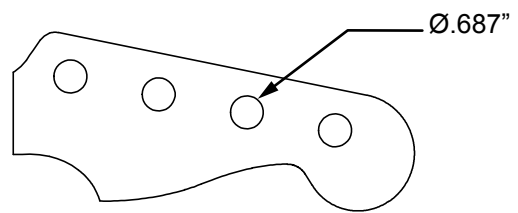


12TH FRET PROFILE

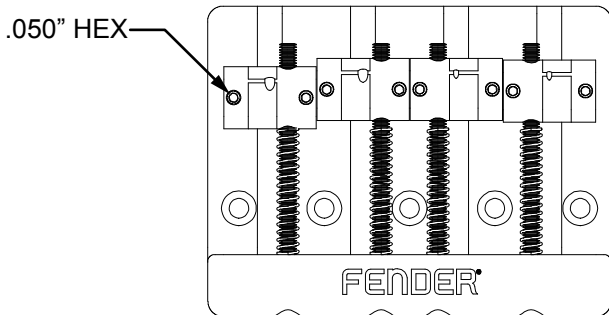
STAGGERED TUNING MACHINES SET: P/N 0992006000
OUTER SHAFT DIAMETER .533"



TUNING MACHINE THRU-HOLE
INNER DIAMETER .687"

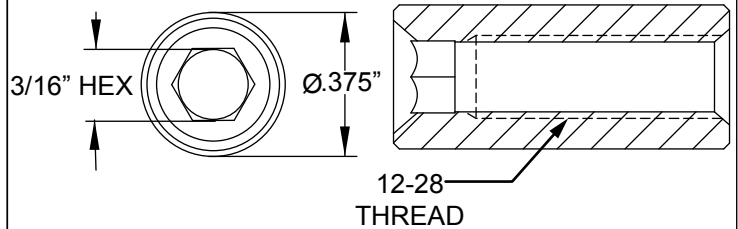


SADDLE HEIGHT ADJUSTMENT WRENCH:
.050" HEX KEY P/N 0018531049



TRUSS ROD ADJUSTMENT NUT:
P/N 0048688049

TRUSS ROD ADJUSTMENT WRENCH:
3/16" HEX KEY P/N 7710885000



LOGO: US DELUXE JAZZ BASS DECAL
APPLIED UNDER THE FINISH



PICKUP SPECIFICATIONS

POSITION	MAGNETS	DC RESISTANCE	POLARITY
NECK	BAR CERAMIC #8	5.2 - 5.8KΩ	NORTH SOUTH