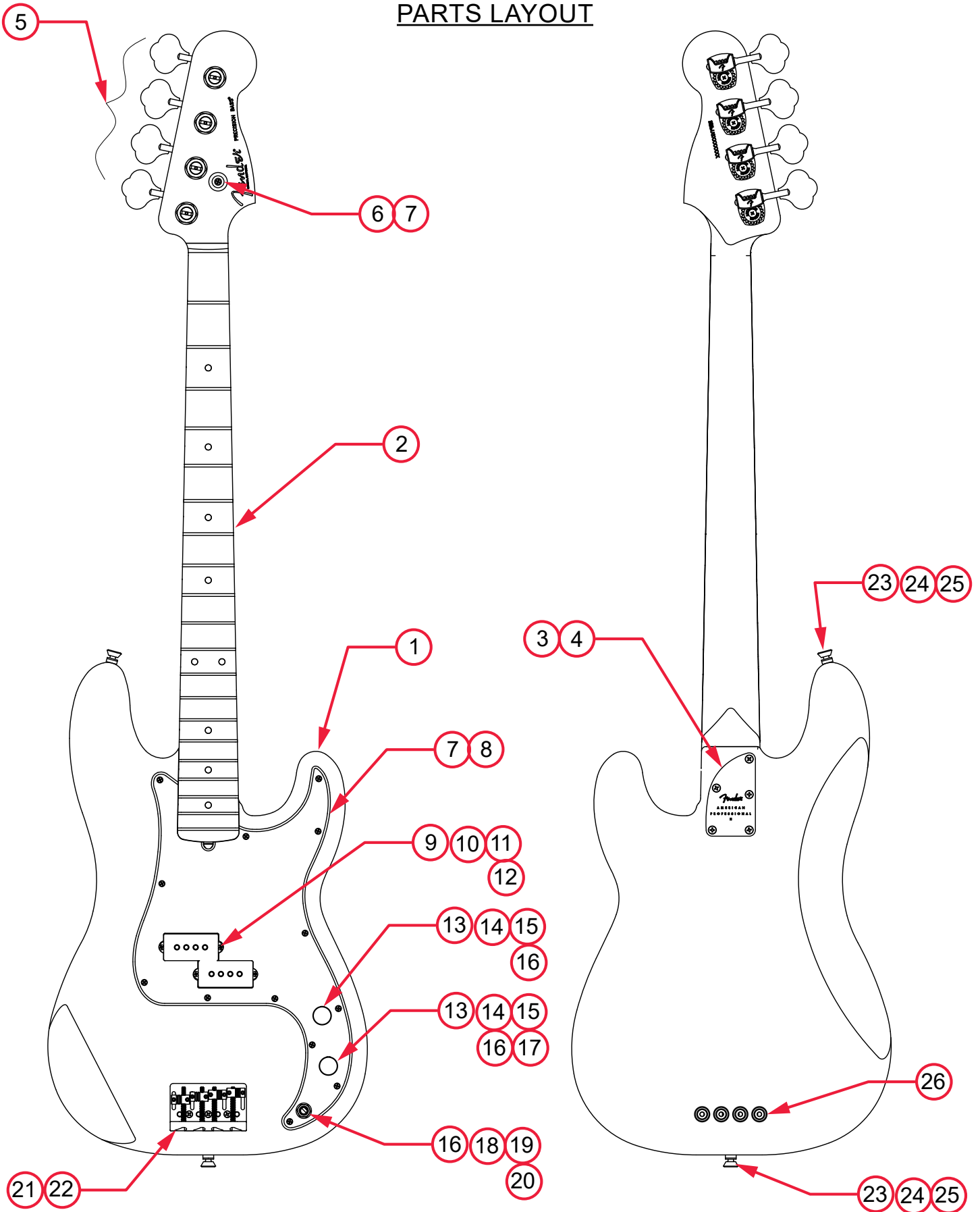


AMERICAN PROFESSIONAL II PRECISION BASS (0193930000)

PARTS LAYOUT



AMERICAN PROFESSIONAL II PRECISION BASS (0193930000)

PARTS LIST

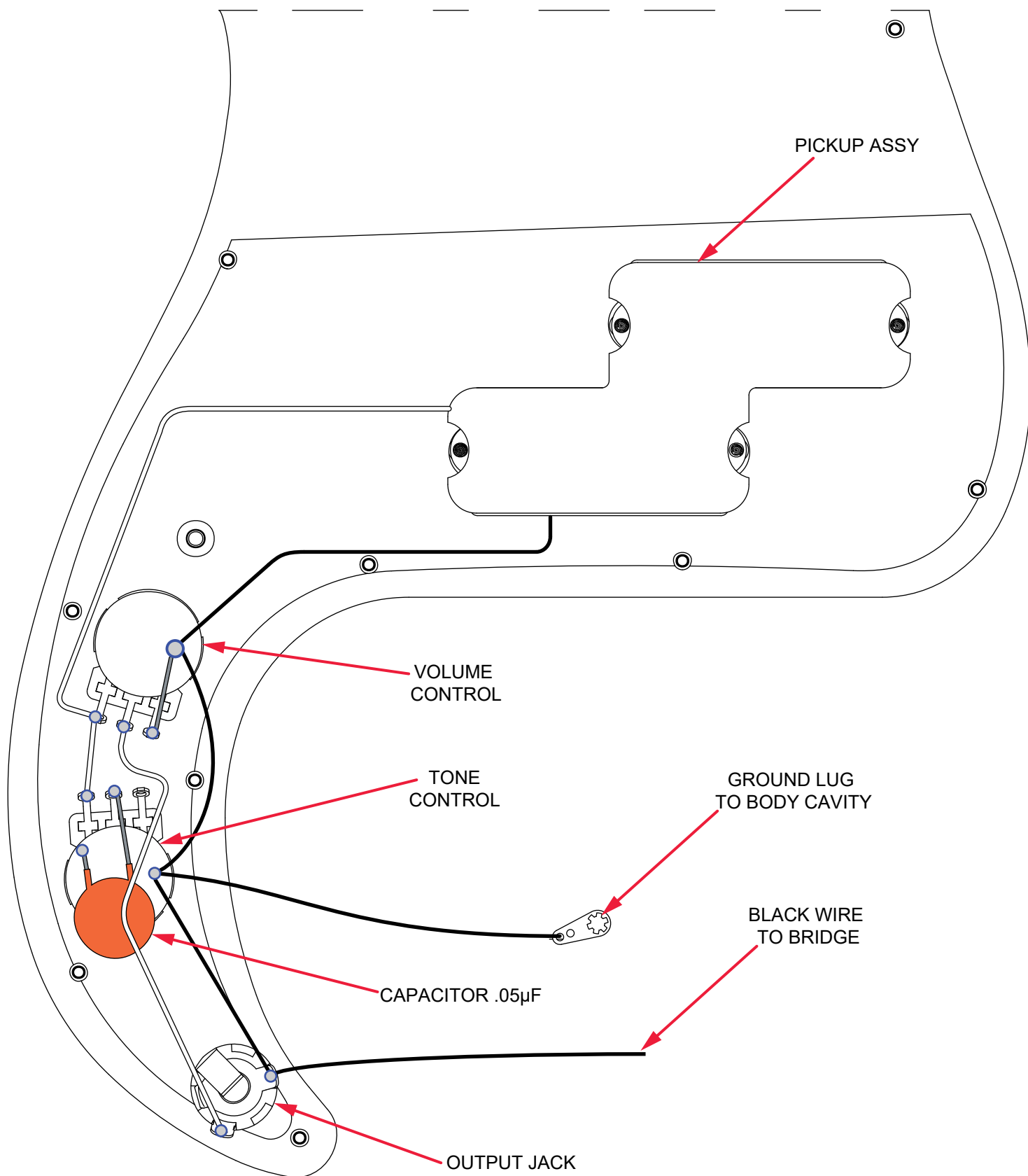
REF#	DESCRIPTION	PART NUMBER
1	BODY AM PRO II P-BASS 3TSB	7719154500
1	BODY AM PRO II P-BASS OWT	7719155505
1	BODY AM PRO II P-BASS DK NIT	7719155561
1	BODY AM PRO II P-BASS MYST SFG	7719155518
1	BODY AM PRO II P-BASS MERC	7719155555
1	BODY AM PRO II P-BASS BLK	7719155506
1	BODY AM PRO II P-BASS MBL	7719155519
2	NECK ASSY AM PRO II P-BASS RW	7718378000
2	NECK ASSY AM PRO II P-BASS MPL	7718379000
3	NECK PLATE AM PRO II BASS CHR	7718313000
4	SCREW SMA 8X 1-3/4 OHP NI	0015636049
5	KEY BASS DLX MOD TAPER LONG SET	0992006000
6	STRING GUIDE BASS CHROME	0994913000
7	SCREW SMAB 4 X 1/2 OHP NI	0015578049
8	PICKGUARD AM STD P-BASS BRN SHELL	0056018000
8	PICKGUARD AM STD P-BASS B/W/B	0063301000
8	PICKGUARD AM STD P-BASS MG/B/MG	0053196000
9	PICKUP ASSY AM PRO II P-BASS	7718384000
10	SCREW WOOD 4 X 1-1/2 RHP STL NI	0078420000
11	SHIELD BLANK PICKUP P-BASS	0014290020
12	WEATHERSTRIP 9/16 X 1/2 OP CL NEOPRENE	0018556049
13	KNOB DIAMOND KNURL ALUM CHR	0095799049
14	CONTROL 250K 10% AUDIO METAL	0990831000
15	WASHER LOCKING INTL 3/8 X .500 X .020 NI	0022384049
16	NUT HEX 3/8-32x3/32 TK NI	0016352049
17	CAP CD .05µF 100V 20%	0015552049
18	JACK PHONE OPEN CIRCUIT 11	0021956049
19	WASHER FLAT 3/8 X .614 NI	0031153000
20	WASHER LOCK INTL 3/8 X .687	0016436049
21	BRIDGE ASSY HIGH MASS VINT BASS W/MTG SCREWS	0075124049
21A	BASEPLATE BASS HIGH MASS VINT	0075125000
21B	BRIDGE BACKSTOP BASS HIGH MASS VINT	0075126000
21C	BRIDGE SADDLE BASS HMV 1-2 BARREL NI	0075127000
21D	BRIDGE SADDLE BASS HMV 3-4 BARREL NI	0075135000
21E	SCREW 6-32 x 5/16 FHP	0076154000

*= NOT PICTURED IN DIAGRAM



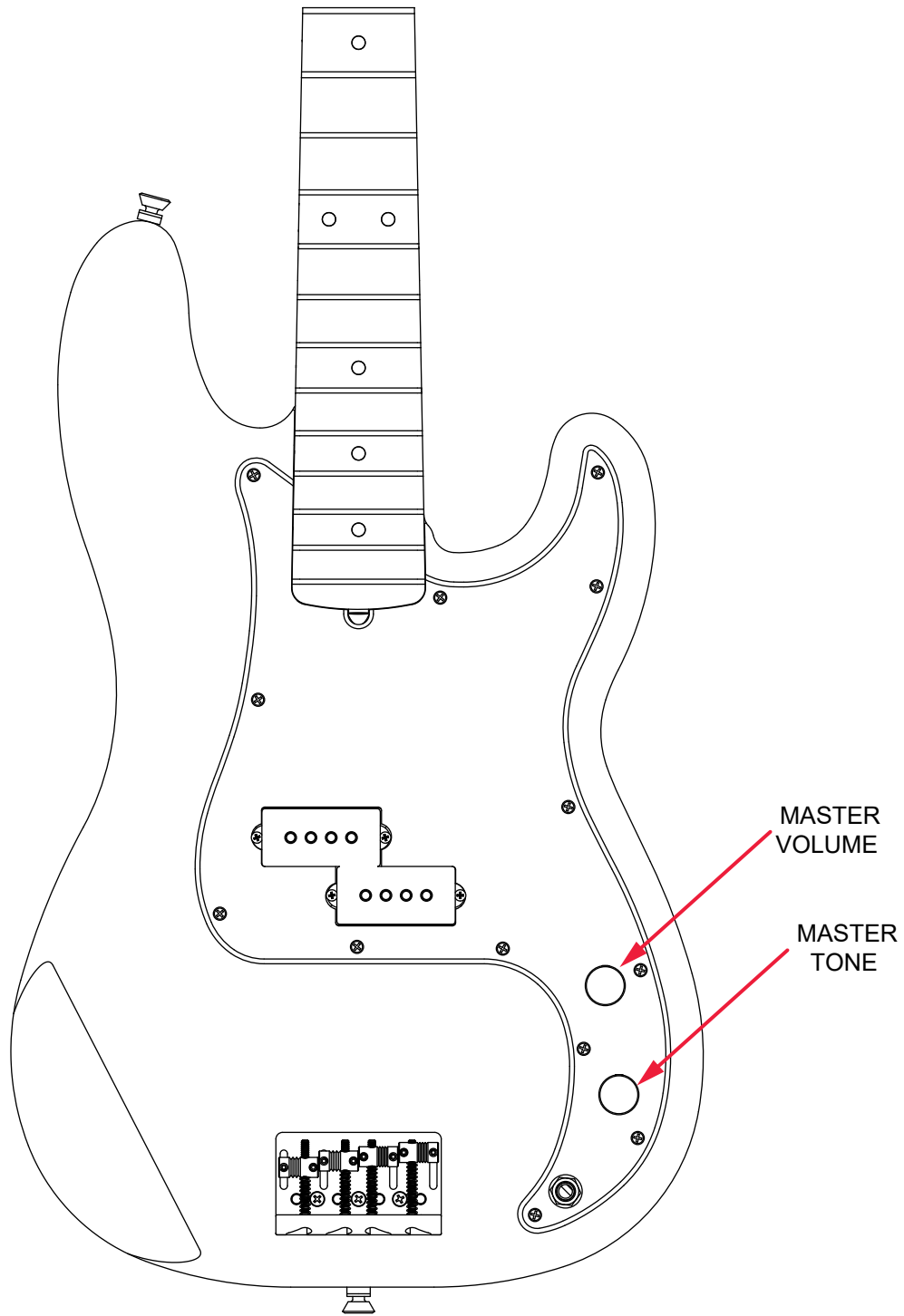
AMERICAN PROFESSIONAL II PRECISION BASS (0193930000)

WIRING ASSEMBLY



AMERICAN PROFESSIONAL II PRECISION BASS (0193930000)

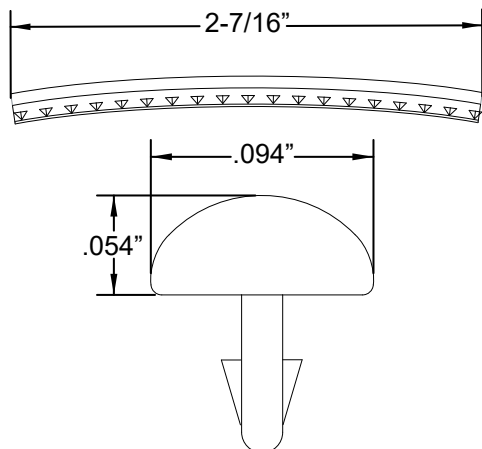
SWITCH AND CONTROL FUNCTION



AMERICAN PROFESSIONAL II PRECISION BASS (0193930000)

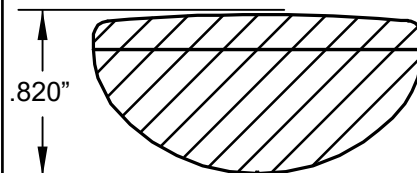
ADDITIONAL SPECIFICATION DETAIL

FRET SIZE: JUMBO NARROW
(FRET DIMENSIONS ARE BEFORE INSTALLATION)

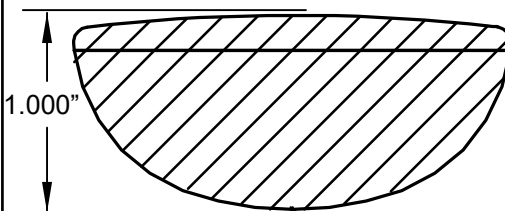


PLEASE NOTE: AS EACH NECK IS SANDED & FINISHED BY HAND, THICKNESS DIMENSIONS MAY VARY SLIGHTLY FROM THOSE SHOWN.

NECK PROFILE: VINTAGE "C"

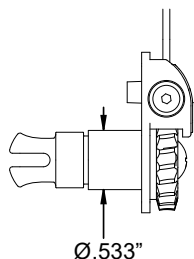


1ST FRET PROFILE

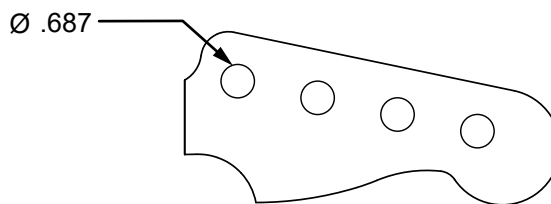


12TH FRET PROFILE

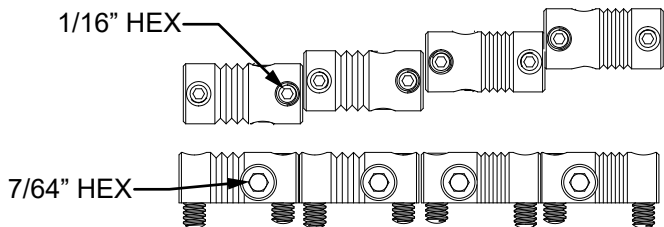
TUNING MACHINE SET : P/N 0992006000
OUTER SHAFT DIAMETER .533"



TUNING MACHINE THRU-HOLE
INNER DIAMETER .687"

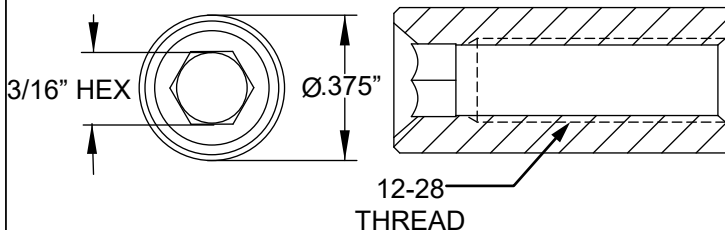


SADDLE HEIGHT ADJUSTMENT WRENCH:
1/16" HEX KEY P/N 0021109049
SADDLE HEIGHT ADJUSTMENT SCREWS: P/N 0075354000



INTONATION ADJUSTMENT WRENCH:
7/64 HEX KEY P/N 0076157000

TRUSS ROD ADJUSTMENT NUT:
P/N 0048688049
TRUSS ROD ADJUSTMENT WRENCH:
3/16" HEX KEY P/N 7710885000



LOGO: AM PRO P-BASS
APPLIED UNDER THE FINISH



PICKUP SPECIFICATIONS

POSITION	MAGNETS	DC RESISTANCE	POLARITY
NECK	ALNICO 4 BEVELED	5.0 - 5.6KΩ	NORTH
BRIDGE	ALNICO 2 BEVELED	5.3 - 5.9KΩ	SOUTH