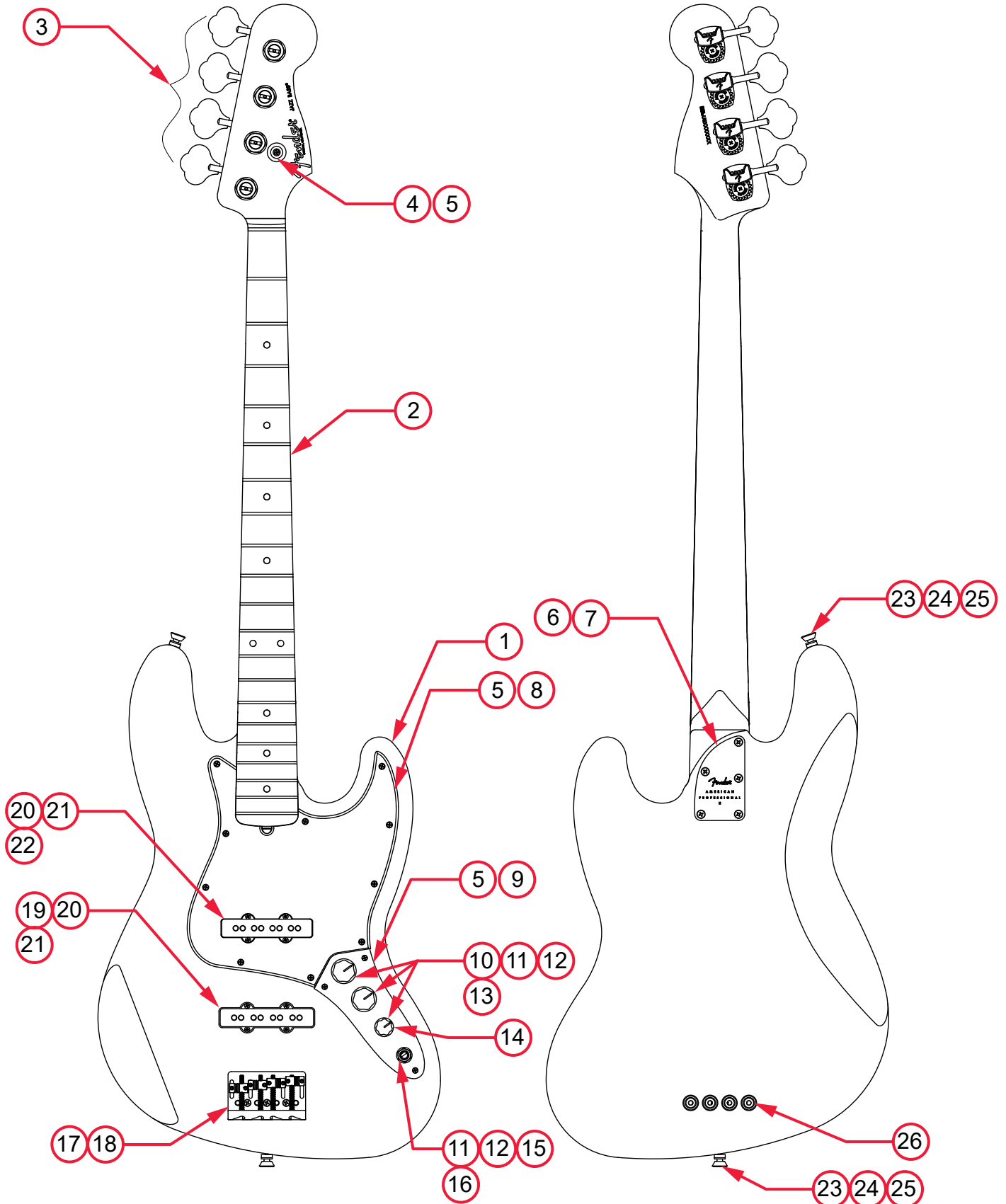


AMERICAN PROFESSIONAL II JAZZ BASS® (019397XXXX)

PARTS LAYOUT



AMERICAN PROFESSIONAL II JAZZ BASS® (019397XXXX)

PARTS LIST

REF#	DESCRIPTION	PART NUMBER
1	BODY AM PRO II JAZZ BASS 3TS	7719160500
1	BODY AM PRO II JAZZ BASS OWT	7719161505
1	BODY AM PRO II JAZZ BASS BLK	7719161506
1	BODY AM PRO II JAZZ BASS MBL	7719161519
1	BODY AM PRO II JAZZ BASS MERC	7719161555
1	BODY AM PRO II JAZZ BASS RST PINE	7719818563
1	BODY AM PRO II JAZZ BASS MYST SFG	7719161518
1	BODY AM PRO II JAZZ BASS DK NIT	7719161561
2	NECK ASSY AM PRO II J-BASS MPL	7718311000
2	NECK ASSY AM PRO II J-BASS RW	7718310000
3	KEY BASS DLX NEW MOD TAPER LONG	7710693000
4	STRING GUIDE BASS CHROME W/SCREW	0994913000
5	SCREW SMAB 4 X 1/2 OHP NI	0015578049
6	NECK PLATE AM PRO II BASS CHRM	7718313000
7	SCREW SMA 8 X 1-3/4 OHP NI	0015636049
8	PICKGUARD AM STD JAZZ BASS B/W/B	0063307000
8	PICKGUARD AM STD JAZZ BASS MG/BLK/MG	0080768000
8	PICKGUARD AM STD JAZZ BASS BRN SHELL	0074131000
9	PLATE CONTROL JAZZ BASS CHROME	0992057100
10	KNOB 2 LARGE 1 SMALL SKIRTED BLACK	0991370000
11	HEX NUT 3/8-32 X 3/32 TK NI	0016352049
12	WASHER LOCK INTL 3/8 X .687	0016436049
13	CONTROL 250K 10%	0990831000
14	CAPACITOR CD .05µF 100V 20%	0015552049
15	JACK PHONE OPEN CIRCUIT	0021956049
16	WASHER FLAT 3/8 X .614 NI	0031153049
17	BRIDGE ASSY HIGH MASS VINTAGE	0075124000
17A	BASE PLATE BASS HIGH MASS VINTAGE	0075125000
17B	BRIDGE BACKSTOP BASS HIGH MASS VINTAGE	0075126000
17C	BRIDGE SADDLE BASS HMV 1-2	0075127000
17D	BRIDGE SADDLE BASS HMV 3-4	0075135000
17E	SCREW 6-32 X 5/16 FHP ZI	0076154000
17F	SCREW CAP 6-32 X 1-1/2 HEX SKT BLX	0075394000
17G	SPRING TELE BRIDGE BLACK	0018872049
17H	SCREW SET 6-32 X 7/16 HEX SKT BLX NYLOK	0075354000
18	SCREW SMAB 5 X 1 OHP NI	0015610049

*= NOT PICTURED IN DIAGRAM



AMERICAN PROFESSIONAL II JAZZ BASS® (019397XXXX)

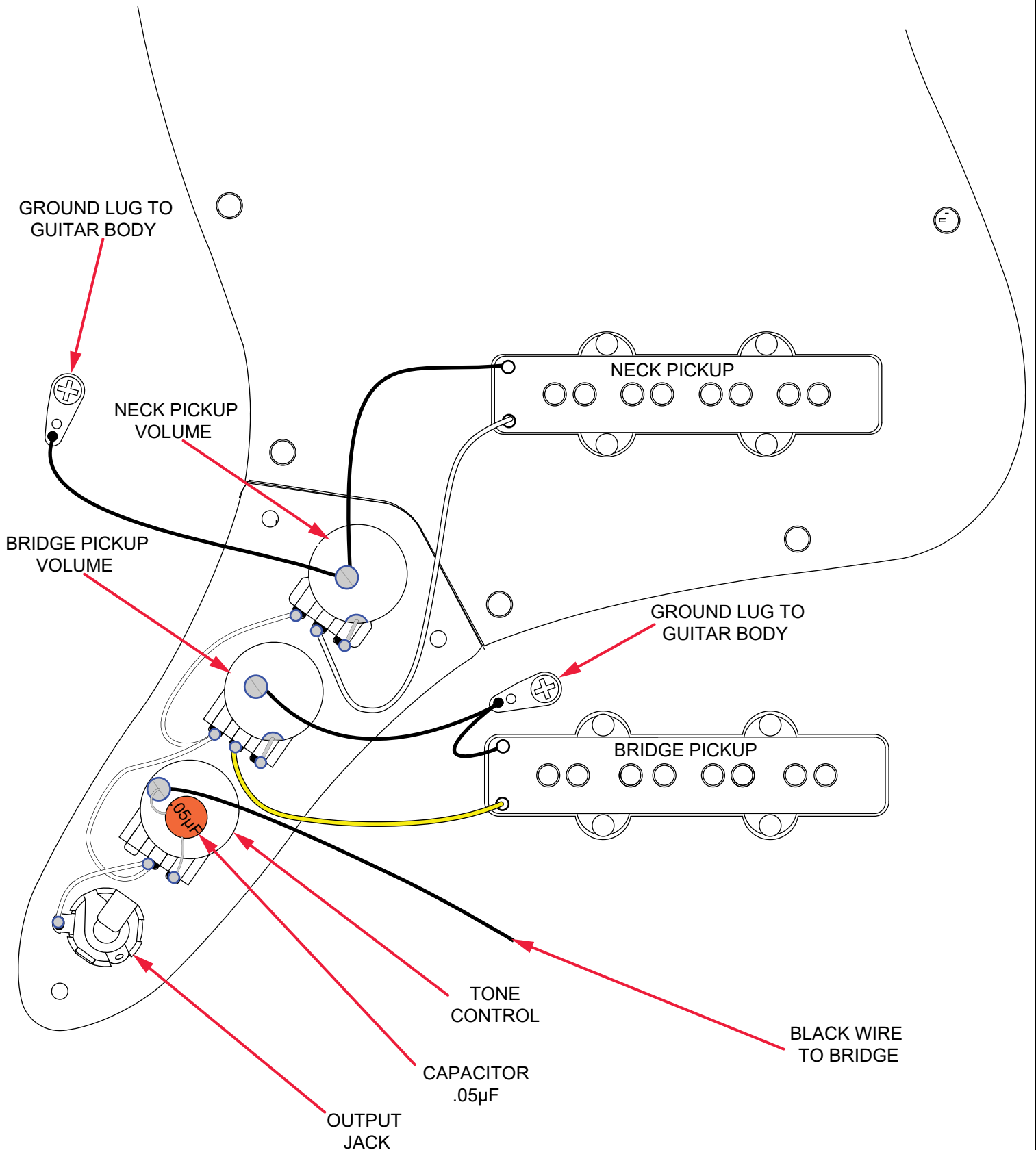
REF#	DESCRIPTION	PART NUMBER
19	PICKUP ASSY AM PRO II J-BASS BRIDGE	7718322000
20	SCREW WD 4 X 1-1/2 RHP NI	0078420000
21	WEATHERSTRIP 9/16 X 1/2 OP CL NEOPRENE	0018556049
22	PICKUP ASSY AM PRO II J-BASS NECK	7718320000
23	BUTTON STRAP CHROME	0063267049
24	WOOD SCREW 6 X 1 OHP NI	0016188049
25	FELT WASHER BLACK	0994929000
25	FELT WASHER WHITE	0994930000
26	FERRULE STRING AM SERIES BASS	0048604049
*	CASE MOLDED ELITE BASS	7708556000
*	WRENCH HEX KEY 1/16 SHORT ARM (SADDLE HEIGHT ADJUSTMENT)	0021109049
*	WRENCH ALLEN WRENCH 3/16 5.5" (TRUSS ROD ADJUSTMENT)	7710885000
*	HEX KEY 7/64 BALL END (INTONATION ADJUSTMENT)	0076157000

*= NOT PICTURED IN DIAGRAM



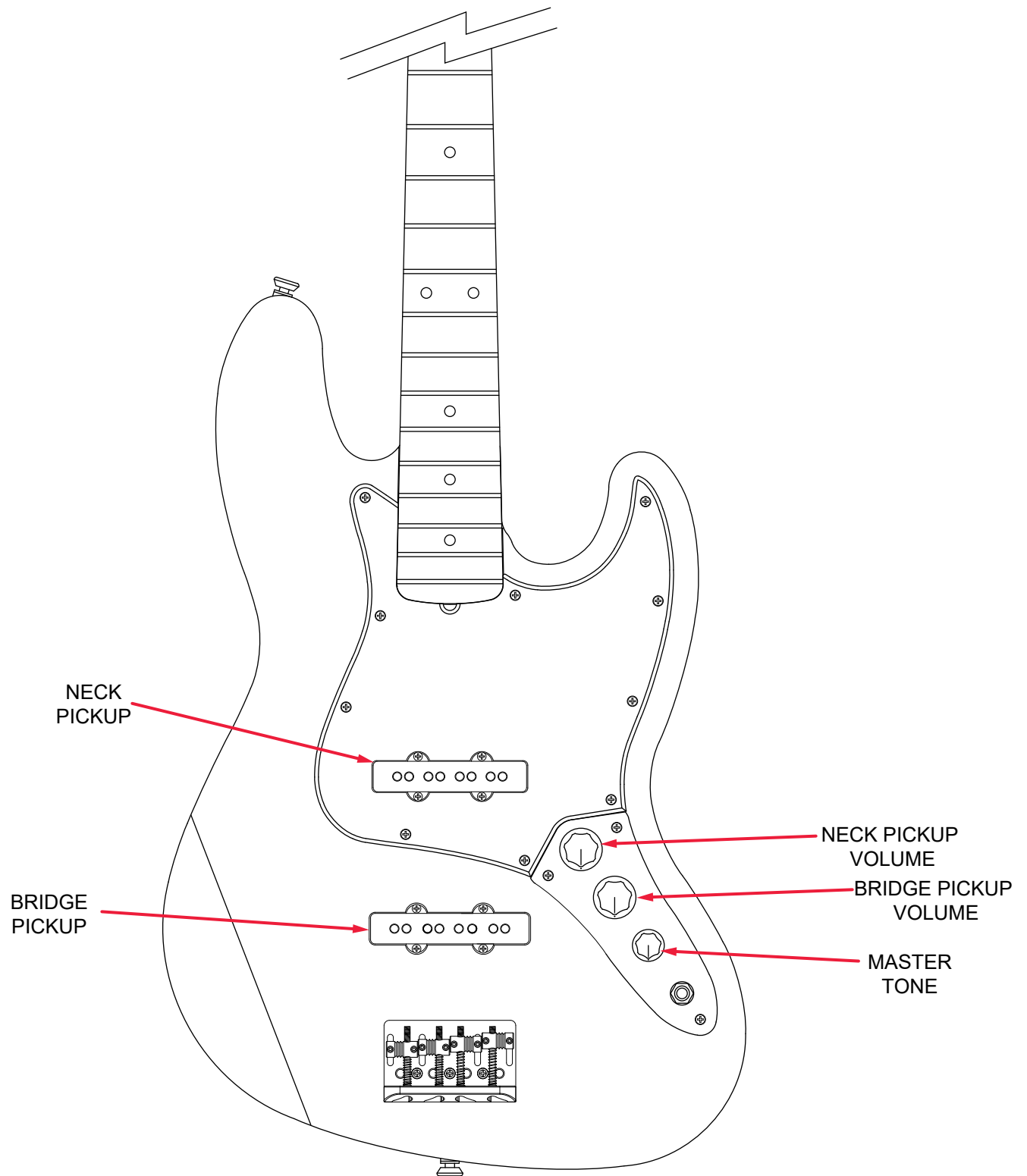
AMERICAN PROFESSIONAL II JAZZ BASS® (019397XXXX)

WIRING ASSEMBLY



AMERICAN PROFESSIONAL II JAZZ BASS® (019397XXXX)

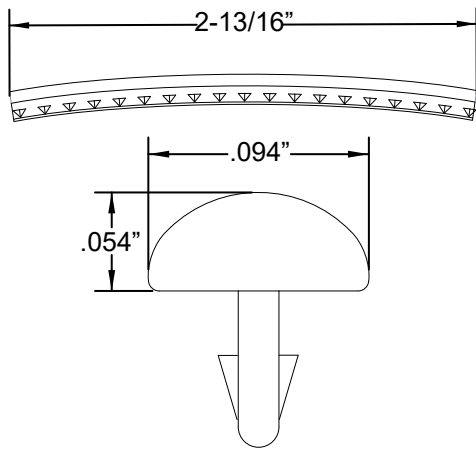
SWITCH AND CONTROL FUNCTION



AMERICAN PROFESSIONAL II JAZZ BASS® (019397XXXX)

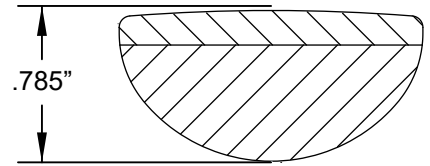
ADDITIONAL SPECIFICATION DETAIL

FRET SIZE: JUMBO NARROW
(FRET DIMENSIONS ARE BEFORE INSTALLATION)

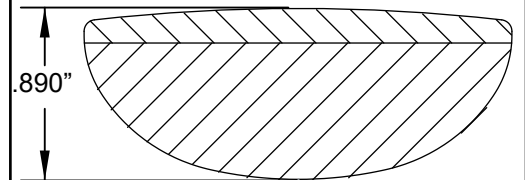


PLEASE NOTE: AS EACH NECK IS SANDED & FINISHED BY HAND, THICKNESS DIMENSIONS MAY VARY SLIGHTLY FROM THOSE SHOWN.

NECK PROFILE: MODERN "C"

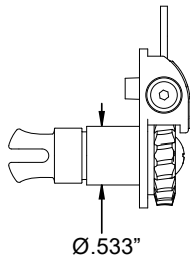


1ST FRET PROFILE

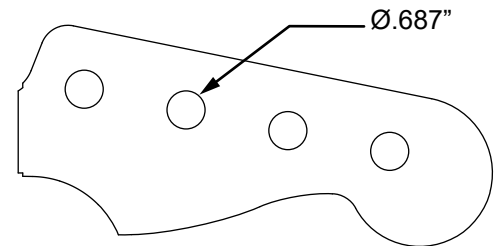


12TH FRET PROFILE

STAGGERED TUNING MACHINES SET: P/N 0097335049
OUTER SHAFT DIAMETER .533"

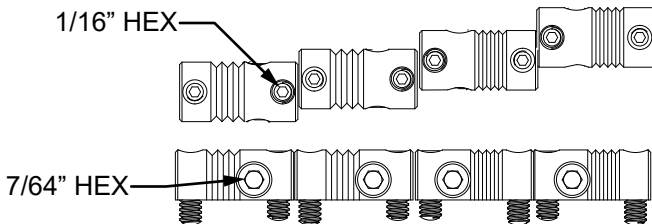


TUNING MACHINE THRU-HOLE
INNER DIAMETER .687"



SADDLE HEIGHT ADJUSTMENT WRENCH:
1/16" HEX KEY P/N 0021109049

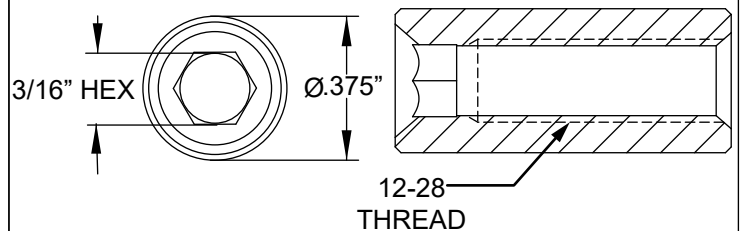
SADDLE HEIGHT ADJUSTMENT SCREWS: P/N 0075354000



INTONATION ADJUSTMENT WRENCH:
7/64 HEX KEY P/N 0995504002

TRUSS ROD ADJUSTMENT NUT:
P/N 0048688049

TRUSS ROD ADJUSTMENT WRENCH:
3/16" HEX KEY P/N 7710885000



LOGO: AM PRO J-BASS DECAL
APPLIED UNDER THE FINISH



PICKUP SPECIFICATIONS

POSITION	MAGNETS	DC RESISTANCE	POLARITY
NECK	ALNICO 2 & 4 BEVELED	7.2 - 7.6KΩ	SOUTH
BRIDGE	ALNICO 2 & 4 BEVELED	7.3 - 7.7KΩ	NORTH