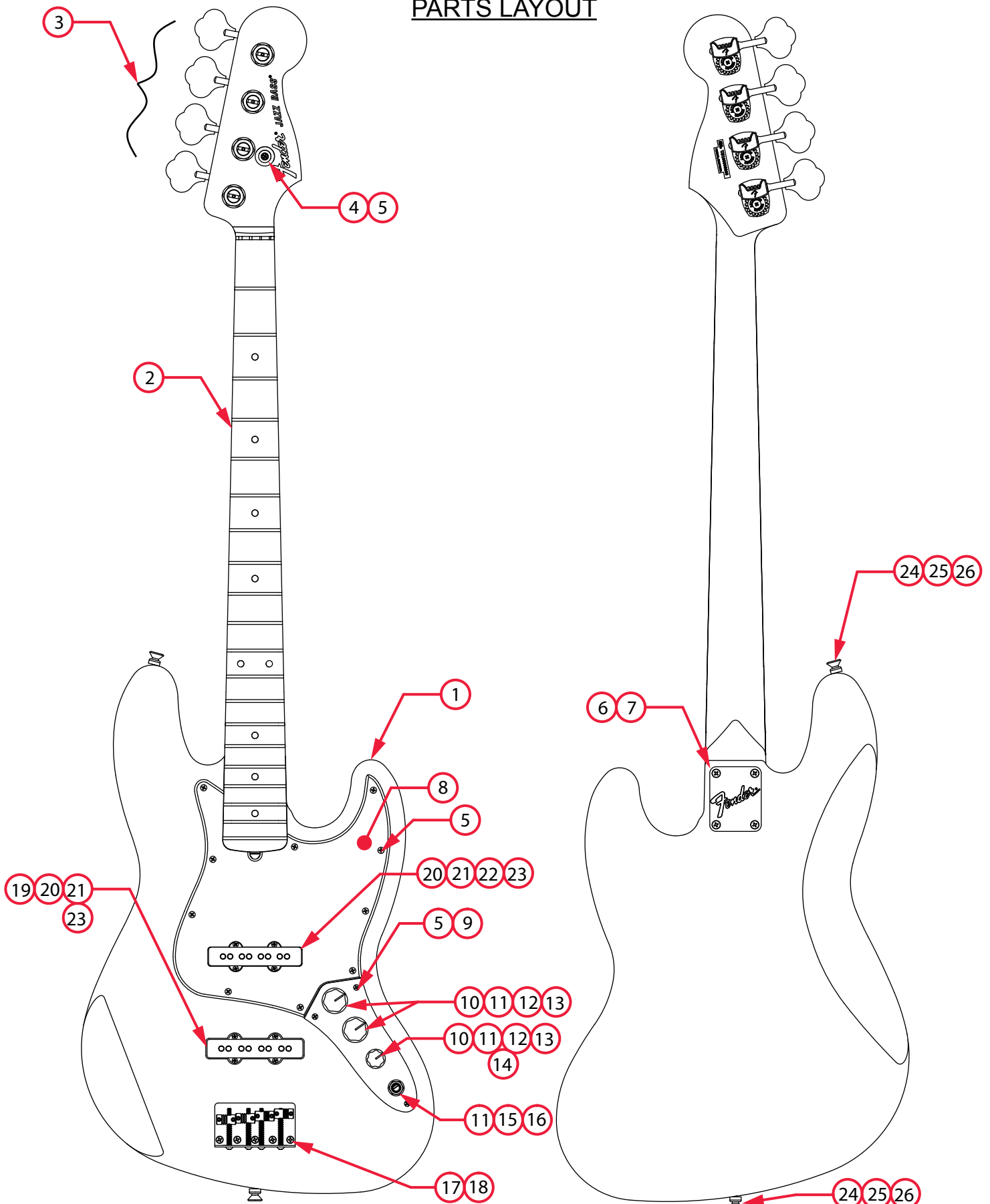


# AMERICAN PERFORMER JAZZ BASS® (019861XXXX)

## PARTS LAYOUT



# AMERICAN PERFORMER JAZZ BASS® (019861XXXX)

## PARTS LIST

REF#	DESCRIPTION	PART NUMBER
1	BODY AM SPECIAL JAZZ BASS GLOSS 3TS	7714140500
1	BODY AM SPECIAL JAZZ BASS GLOSS AWT	7714140580
1	BODY AM SPECIAL JAZZ BASS GLOSS PNY	7714140584
1	BODY AM SPECIAL JAZZ BASS SATIN SFG	7714141557
2	NECK ASSY AM PERFORMER J-BASS MPL	7713214000
2	NECK ASSY AM PERFORMER J-BASS RW	7713195000
3	KEY BASS DLX NEW MOD TAPER LONG SET	0992006000
4	STRING GUIDE BASS BARREL NI	0013235000
5	SCREW SMAB 4 X 1/2 OHP NI	0015578049
6	PLATE NECK STD SERIES LOGO NO TILT	0048691000
7	SCREW SMA 8 X 1-3/4 OHP NI	0015636049
8	PICKGUARD AM STD JAZZ BASS B/W/B	0063307000
9	PLATE CONTROL JAZZ BASS CHROME ALUM	0992057100
10	KNOB 2 LARGE 1 SMALL SKIRTED BLACK	0991370000
11	HEX NUT 3/8-32 X 3/32 TK NI	0016352049
12	WASHER LOCK INTL 3/8 X .687	0016436049
13	CONTROL 250K 10% AUDIO METAL	0990831000
14	PCB ASSY GREASE BUCKET TONE CIRCUIT	7713546000
15	JACK PHONE 1/4 OUTPUT	0047329049
16	WASHER FLAT 3/8 X .614 NI	0031153049
17	BRIDGE ASSY AM PERFORMER BASS	7713210000
17A	BRIDGE PLATE JAZZ BASS	0010538070
17B	BRIDGE SADDLE AM SRS BASS 1-2 BARREL NI	0075127000
17C	BRIDGE SADDLE AM SRS BASS 3-4 BARREL NI	0075135000
17D	SCREW M 6-32 X 1-1/2 RHP NI	0015842049
17E	SPRING COMPRESSION 1-1/16 #144	0018689049
17F	SPRING COMPRESSION 1-3/8 x 0.15 NI	0099135000
17G	SCREW SET 6-32 X 7/16 HEX SKT BLX NYLOK	0075354000
18	SCREW SMAB 5 X 1 OHP NI	0015610049
19	PICKUP ASSY AM PERFORMER J-BASS BRIDGE	7713562000
20	SCREW WD 4 X 1-1/4 RHP NI	0027035049
21	SHIELD PICKUP NECK JAZZ BASS 62 6-1/2 WIRE	0061289000
22	PICKUP ASSY AM PERFORMER J-BASS NECK	7713561000
23	PICKUP COVERS SET	0992038000

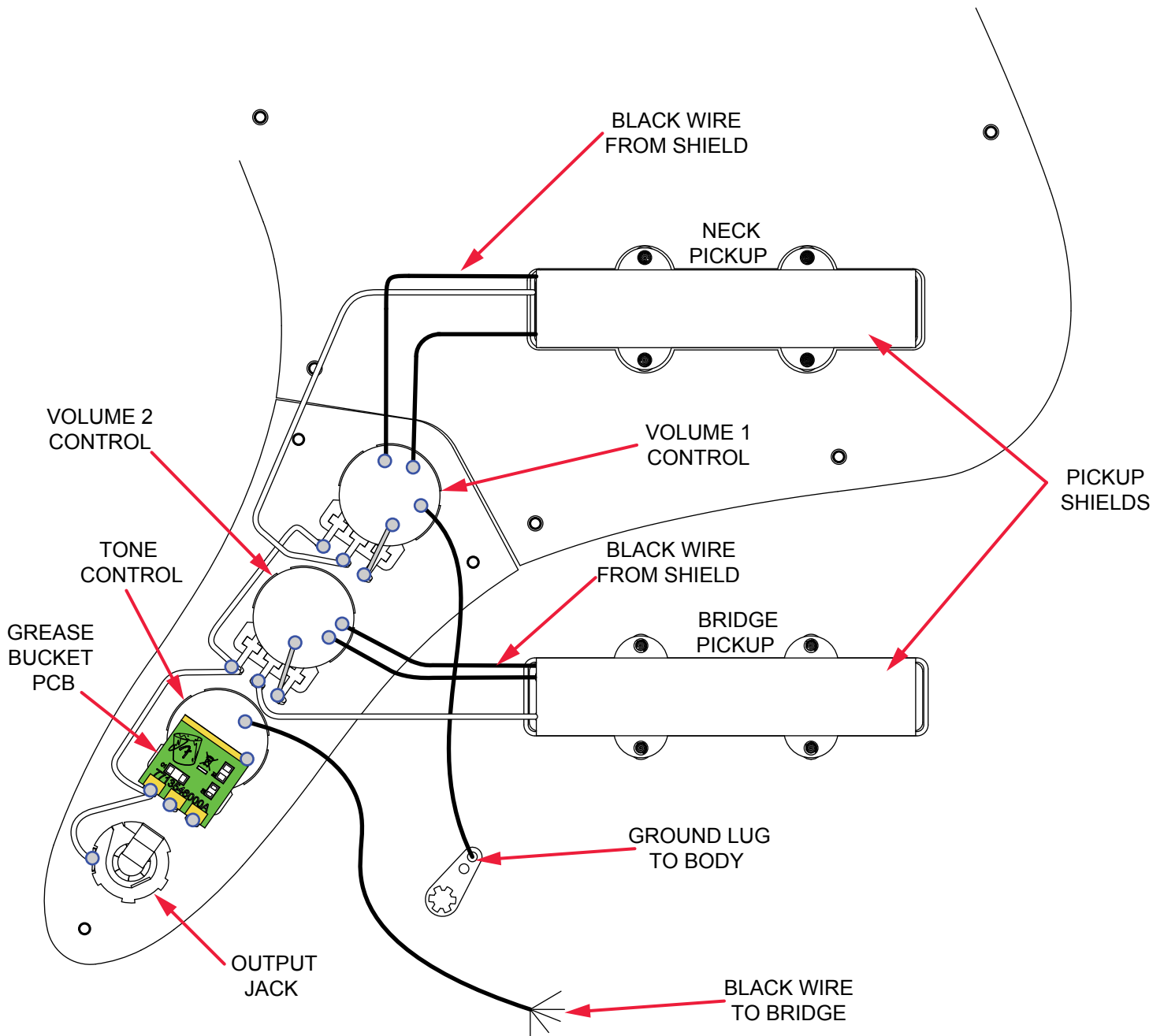
\*= NOT PICTURED IN DIAGRAM





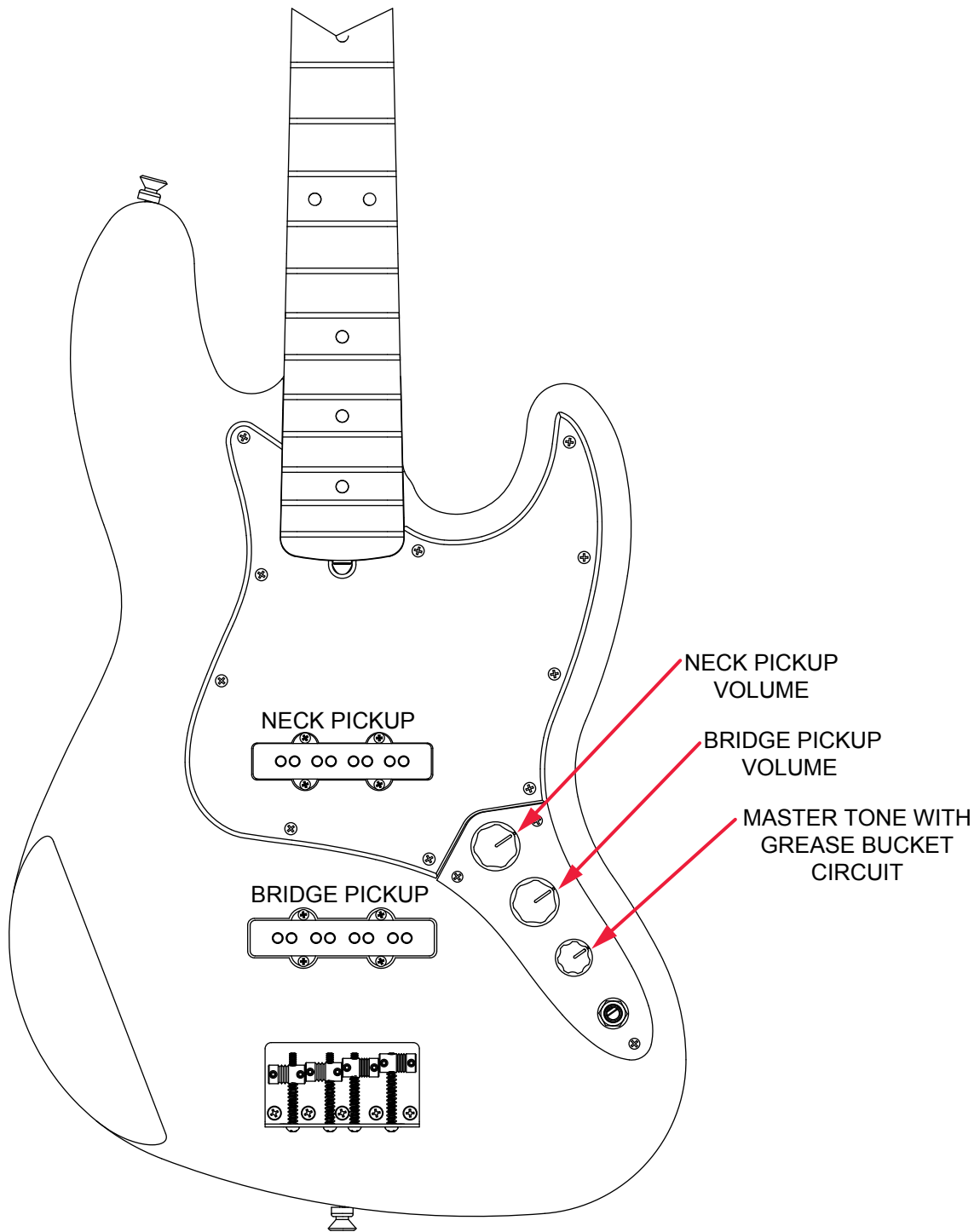
# AMERICAN PERFORMER JAZZ BASS® (019861XXXX)

## WIRING ASSEMBLY



# AMERICAN PERFORMER JAZZ BASS® (019861XXXX)

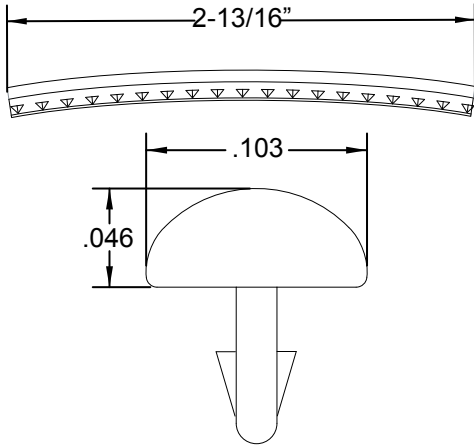
## SWITCH AND CONTROL FUNCTION



# AMERICAN PERFORMER JAZZ BASS® (019861XXXX)

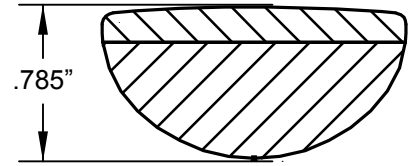
## ADDITIONAL SPECIFICATION DETAIL

**FRET SIZE: MEDIUM JUMBO**  
(FRET DIMENSIONS ARE BEFORE INSTALLATION)

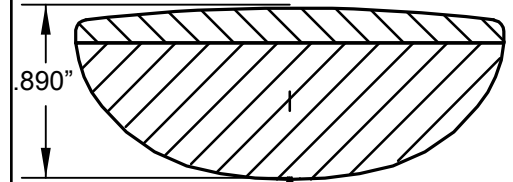


PLEASE NOTE: AS EACH NECK IS SANDED & FINISHED BY HAND, THICKNESS DIMENSIONS MAY VARY SLIGHTLY FROM THOSE SHOWN.

**NECK PROFILE: MODERN "C"**



1ST FRET PROFILE

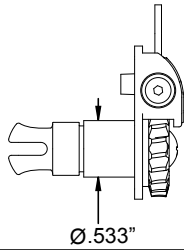


12TH FRET PROFILE

**KEYS BASS DLX NEW MOD TAPER LONG SET:**

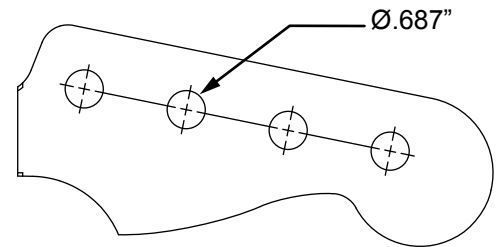
P/N 0992006000

**OUTER SHAFT DIAMETER .533"**



**TUNING MACHINE THRU-HOLE**

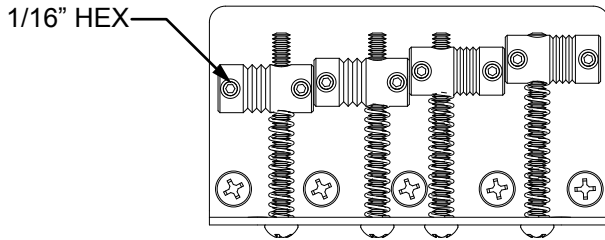
**INNER DIAMETER .687"**



**SADDLE HEIGHT ADJUSTMENT WRENCH:**

1/16" HEX KEY P/N 0021109049

**SADDLE HEIGHT ADJUSTMENT SCREWS: P/N 0075354000**

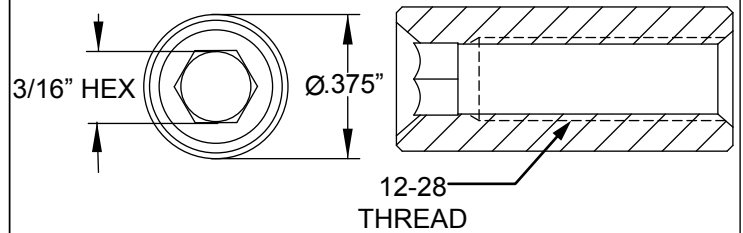


**TRUSS ROD ADJUSTMENT NUT:**

P/N 0048688049

**TRUSS ROD ADJUSTMENT WRENCH:**

3/16" HEX KEY P/N 7710885000



**LOGO: AM PERFORMER J-BASS DECAL**  
**APPLIED UNDER THE FINISH**



### PICKUP SPECIFICATIONS

POSITION	MAGNETS	DC RESISTANCE	POLARITY
NECK	ALNICO 5 UNBEVELED	6.7 - 7.3KΩ	NORTH
BRIDGE	ALNICO 5 UNBEVELED	7.2 - 7.8KΩ	SOUTH

