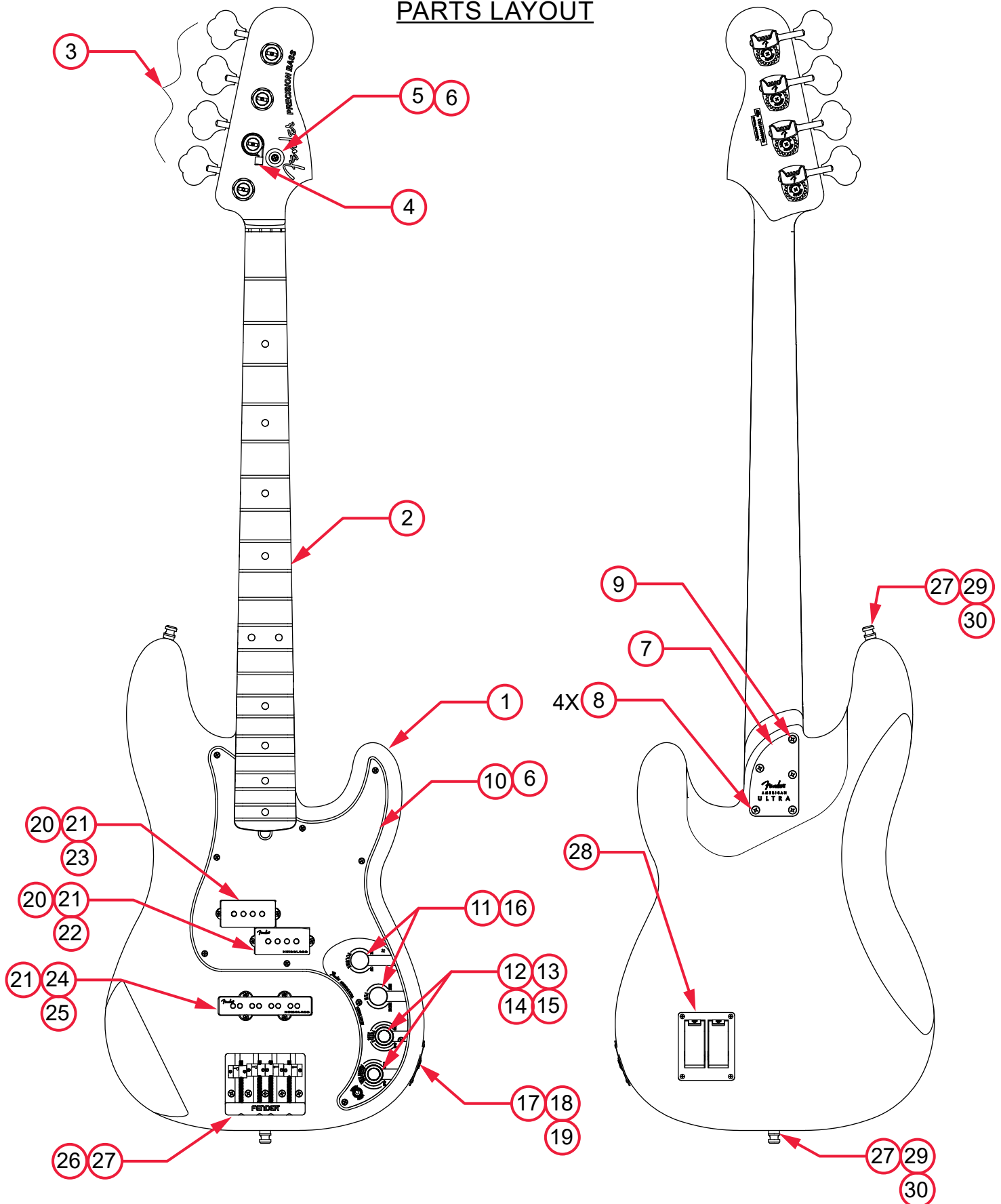


AMERICAN ULTRA PRECISION BASS® (019901XXXX)

PARTS LAYOUT



AMERICAN ULTRA PRECISION BASS® (019901XXXX)

PARTS LIST

REF#	DESCRIPTION	PART NUMBER
1	BODY AM ULTRA P-BASS ULTRA BURST	7715728512
1	BODY AM ULTRA P-BASS MOCHA BURST	7715728532
1	BODY AM ULTRA P-BASS AGED NATURAL	7715729534
1	BODY AM ULTRA P-BASS PLASMA RED	7715729573
1	BODY AM ULTRA P-BASS ARCTIC PEARL	7715727581
2	NECK ASSY AM ULTRA P-BASS RW	7715731000
2	NECK ASSY AM ULTRA P-BASS MPL	7715730000
3	KEYS BASS DLX NEW MOD TAPER LONG CHROME(4)	0992006000
4	STRING GUIDE AM DLX BASS "A" STRING CHROME	0080597000
5	STRING GUIDE P/J BASS CHRM	0079014000
6	SCREW SMAB 4 X 1/2 OHP NI	0015578049
7	NECK PLATE AM ULTRA BASS CHROME	7715478000
8	SCREW SMA 8 X 1-3/4 OHP NI	0015636049
9	SCREW SMA 8X 1-1/2 OHP NI	7716272000
10	PICKGUARD AM DLX P-BASS MG/BLK/MG	7716198000
10	PICKGUARD AM DLX P-BASS B/W/B	0077644000
10	PICKGUARD AM DLX P-BASS AGED WHITE PEARL	7716199000
10	PICKGUARD AM DLX P-BASS BROWN SHELL	0099877000
11	KNOB CONTROL ALUM CHROME W/SET SCREW	0095799049
12	KNOB KNURLED UPPER CHROME	0049458000
13	SET SCREW 8-32 X 1/8 SL CUP NI	0050101049
14	KNOB KNURLED LOWER CHROME	0049457000
15	SET SCREW 8-32 X 3/16 SL CUP	0994922000
16	PCB ASSY ULTRA P-BASS W/ MTG HDWR	7716594000
17	JACK 6.3 OUTPUT	0073618000
18	FERRULE JACK RECESS FOOTBALL CHROME	0050100000
19	WIRE HARNESS OUTPUT 4-PIN 24GA 9.5"	7708984000
20	WEATHERSTRIPPING 3/8 X 3/8 OP CL NEOP	0017333049
21	SCREW 4 X 1-1/2 WOOD RD PH NI	0078420000
22	PICKUP ASSY P-BASS AM ULTRA BRIDGE GLOSS BLK	7715734000
23	PICKUP ASSY P-BASS AM ULTRA NK GLOSS BLK	7715733000
24	PICKUP ASSY AM ULTRA J-BASS IV BRIDGE	7715474000
25	WEATHERSTRIPPING 9/16 X 1/2 OP CL NEOP	0018556049
26	BRIDGE ASSY FENDER DIM BASS HIGH MASS BASS IV	0099071000
27	SCREW SMAB 5 X 1 OHP NI	0015610049

*= NOT PICTURED IN DIAGRAM



AMERICAN ULTRA PRECISION BASS® (019901XXXX)

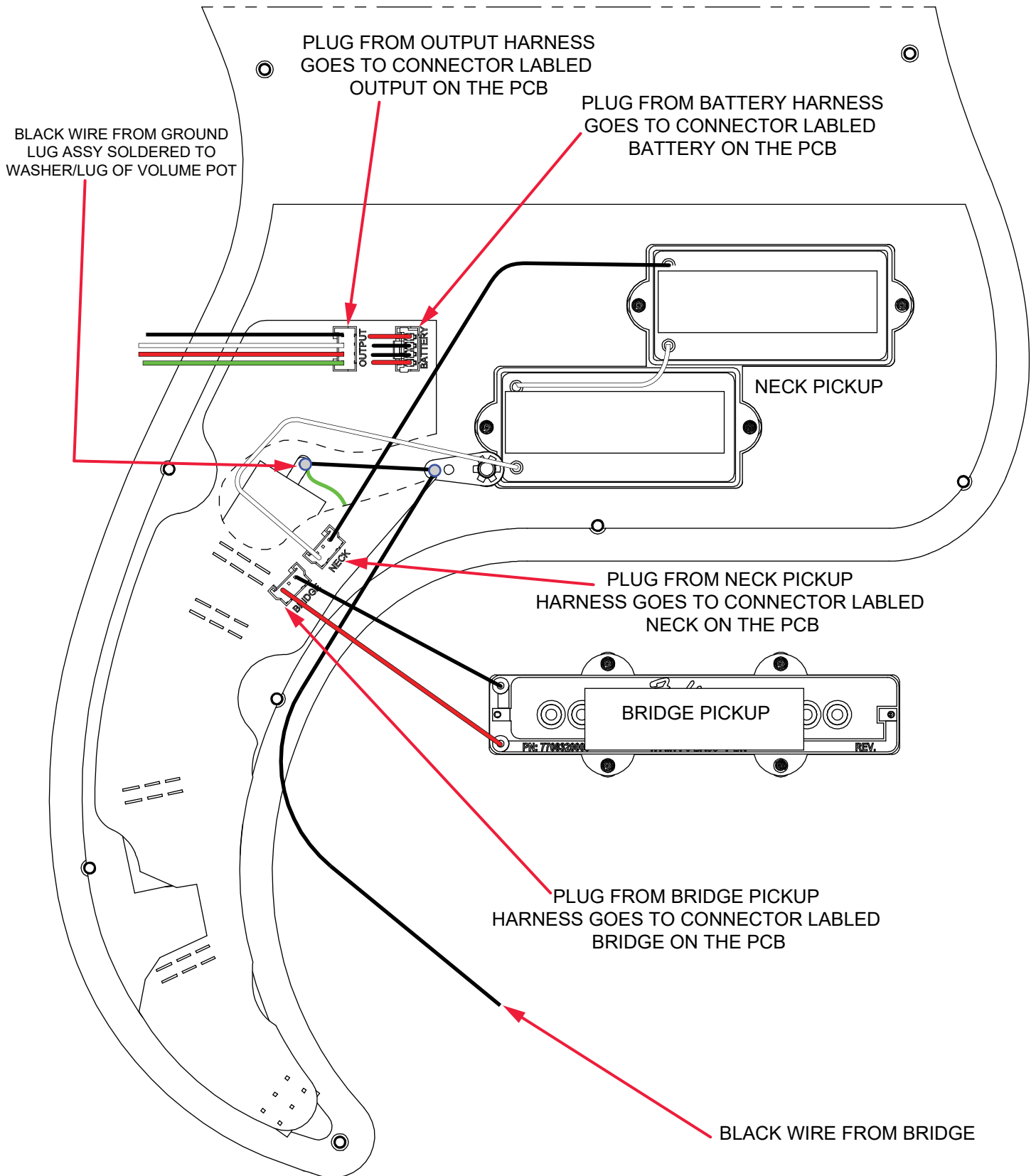
REF#	DESCRIPTION	PART NUMBER
28	BATTERY BOX w/ HARNESS DIM BASS	7700192010
29	STRAP BUTTON STD/ELITE CHROME	0994914000
30	FELT WASHERS BLACK	0994929000
30	FELT WASHERS WHITE	0994930000
*	CASE MOLDED AM ELITE BASS	7708556000
*	WRENCH HEX 3/16 (TRUSS ROD ADJUSTMENT)	7710885000
*	WRENCH HEX .050 (INTONATION SCREW ADJUSTMENT)	0018531049

*= NOT PICTURED IN DIAGRAM



AMERICAN ULTRA PRECISION BASS® (019901XXXX)

WIRING ASSEMBLY



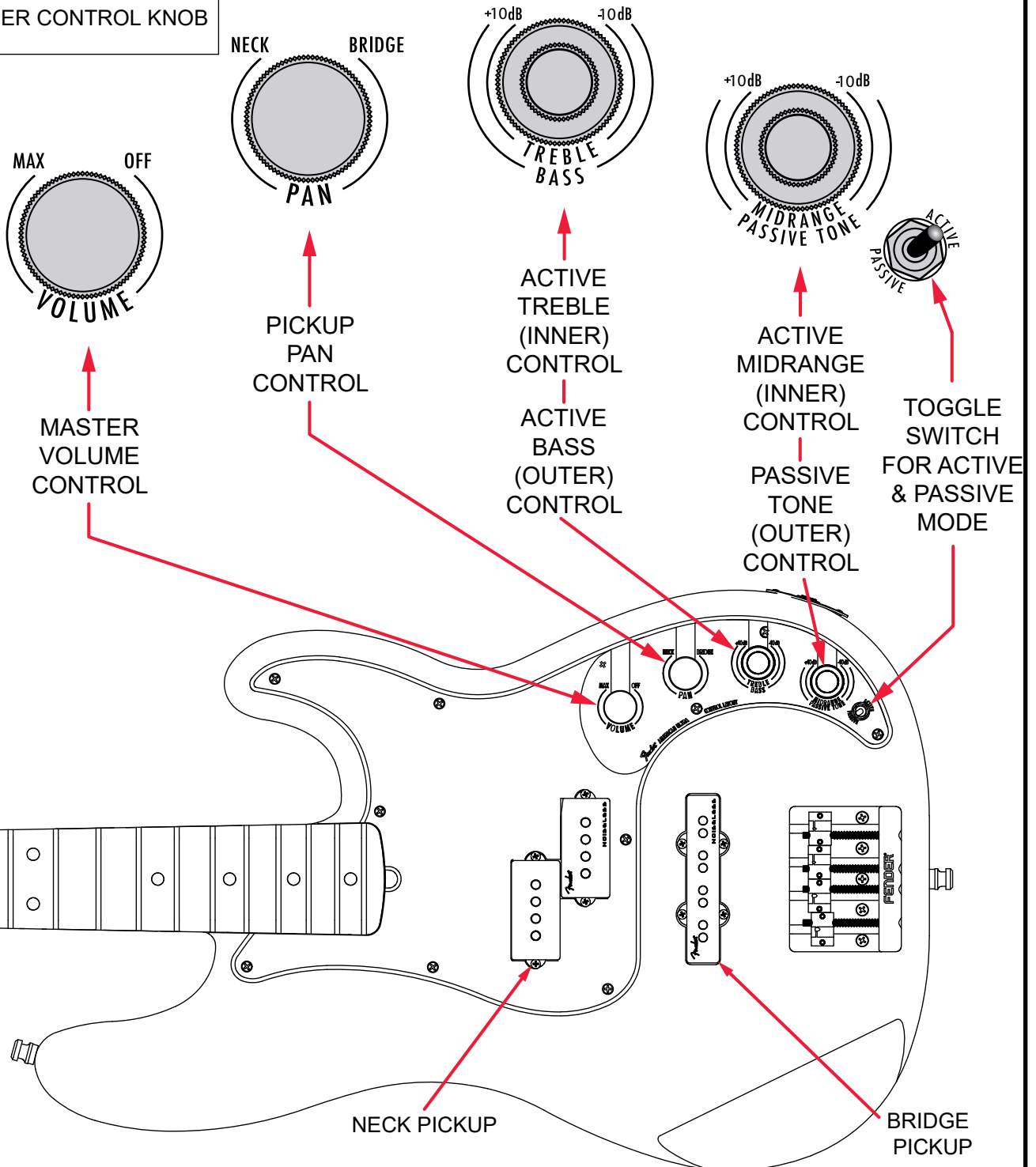
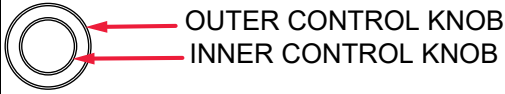
AMERICAN ULTRA PRECISION BASS® (019901XXXX)

SWITCH AND CONTROL FUNCTION

SWITCH FUNCTION

CONTROLS

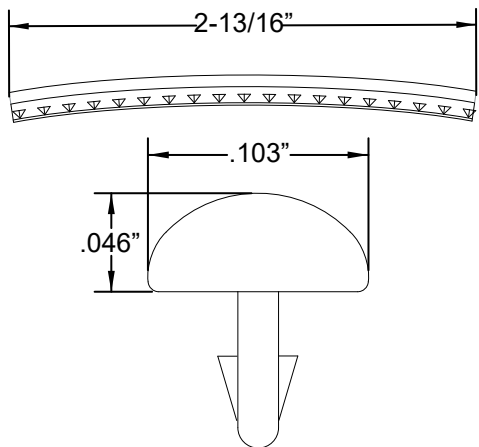
TREBLE INNER	BASS OUTER	MIDRANGE INNER	PASSIVE TONE OUTER	SWITCH POSITION
ON	ON	ON	OFF	ACTIVE
OFF	OFF	OFF	ON	PASSIVE



AMERICAN ULTRA PRECISION BASS® (019901XXXX)

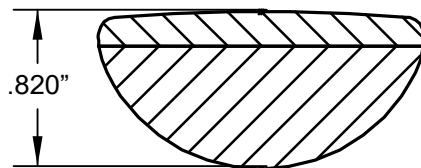
ADDITIONAL SPECIFICATION DETAIL

FRET SIZE: MEDIUM JUMBO
(FRET DIMENSIONS ARE BEFORE INSTALLATION)

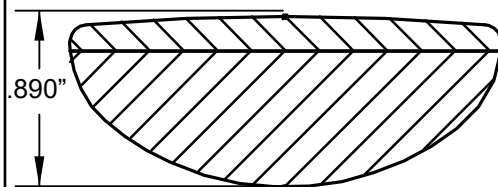


PLEASE NOTE: AS EACH NECK IS SANDED & FINISHED BY HAND, THICKNESS DIMENSIONS MAY VARY SLIGHTLY FROM THOSE SHOWN.

NECK PROFILE: ULTRA MODERN "D"

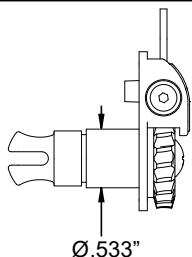


1ST FRET PROFILE

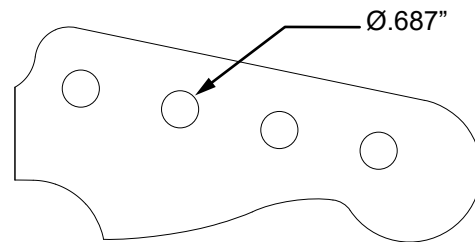


12TH FRET PROFILE

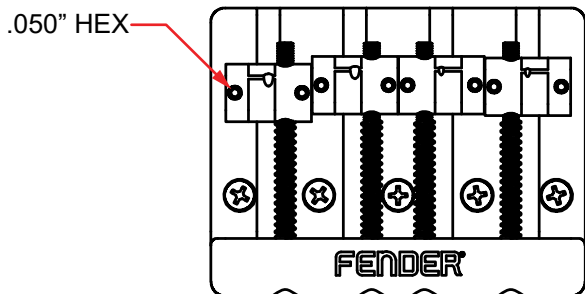
TUNING MACHINES SET: P/N 0992006000
OUTER SHAFT DIAMETER .533"



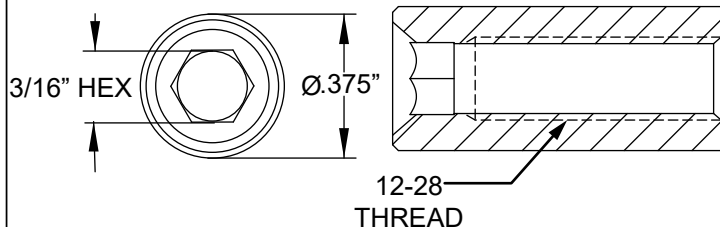
TUNING MACHINE THRU-HOLE
INNER DIAMETER .687"



SADDLE HEIGHT ADJUSTMENT WRENCH:
.050" HEX KEY P/N 0018531049



TRUSS ROD NUT: P/N 0048688049
TRUSS ROD ADJUSTMENT WRENCH:
3/16" HEX KEY P/N 7710885000



LOGO: AM ULTRA P-BASS DECAL
APPLIED UNDER THE FINISH



PICKUP SPECIFICATIONS

POSITION	MAGNETS	DC RESISTANCE	POLARITY
NECK	ALNICO 5 BEVELED	14.56 - 15.16KΩ	NORTH
		15.34 - 15.94KΩ	NORTH
BRIDGE	ALNICO 5 UNBEVELED	14.62 - 15.22KΩ	NORTH