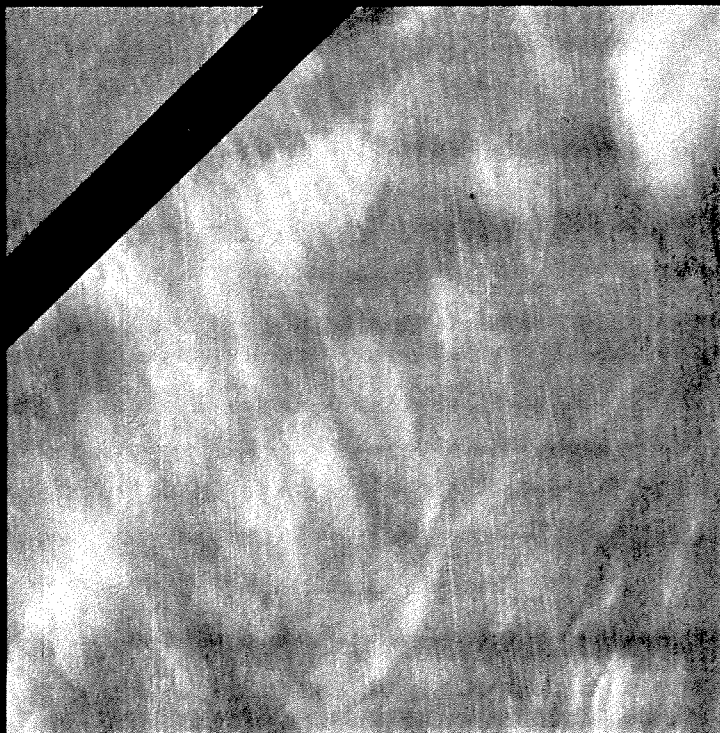


# *Master Series* *by* *Fender®*



Contents

FEATURES

D'Aquisto 2

Esprit 3

Flame 4

CONTROL OPERATIONS

Volume Control 5

Tone Control 5

Adjustable Pickups 5, 6

Adjustable Bridges 6

Adjustable Tailpiece 7

SECURITY LOCK-STRAP SYSTEM 8

Adjustment Procedure 8, 9, 10, 11

Care of Your Fender Guitar 12

## *Thank you . . .*

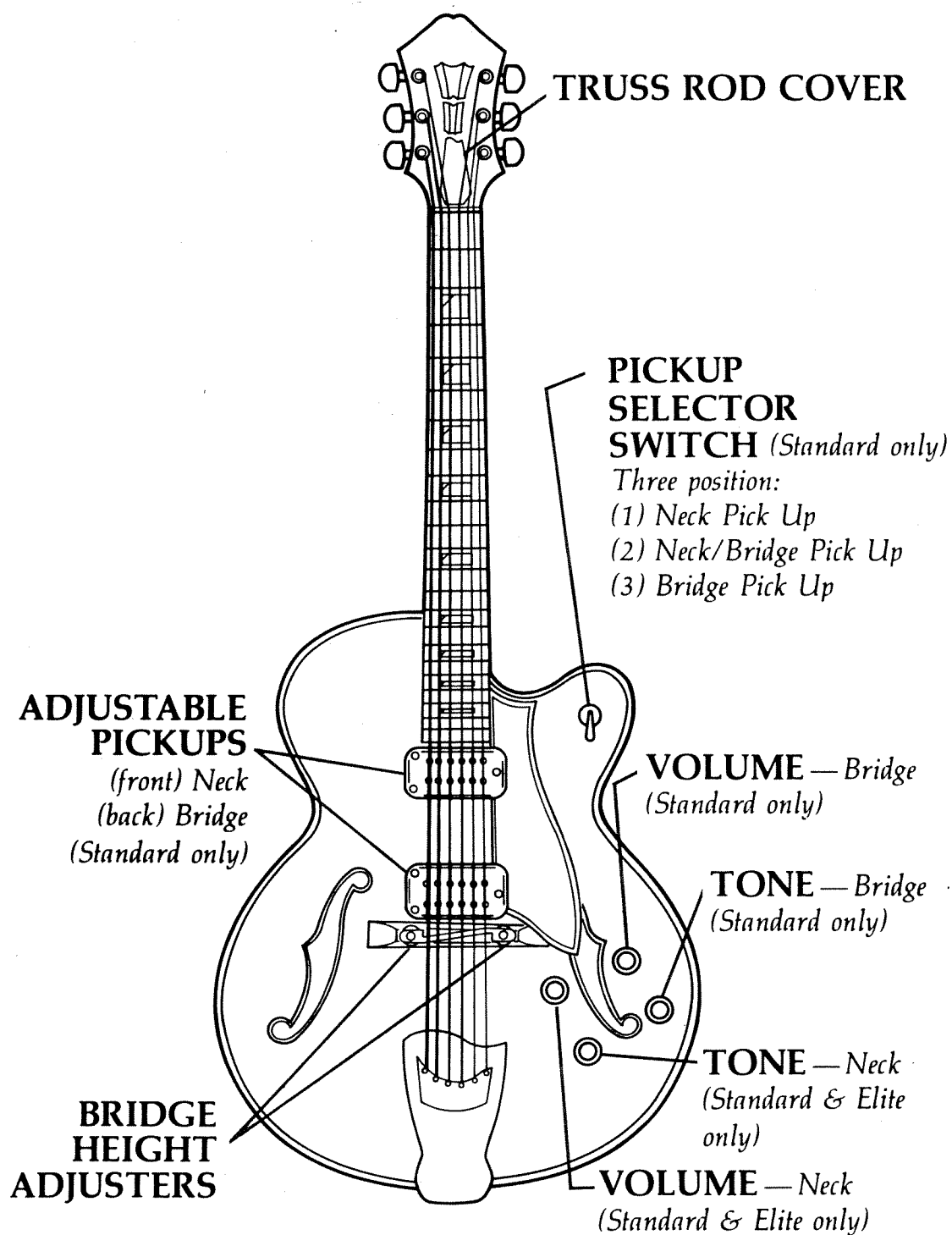
*We are pleased that you have selected one of our fine quality Master Series guitars. Whether it's an Esprit, Flame or D'Aquisto model, each instrument incorporates the highest quality components with the finest workmanship and is warranted to give you complete satisfaction.*

*From the elegantly crafted D'Aquisto Series—designed and built under the personal supervision of the master luthier himself—to the contemporarily-styled Esprit models—to the slimmed-down Flame line, each offers a combination of time-proven design and exciting new tonalities and features unavailable anywhere else. As a result, you are assured of receiving an instrument of superior quality, lasting beauty and exceptional playability.*

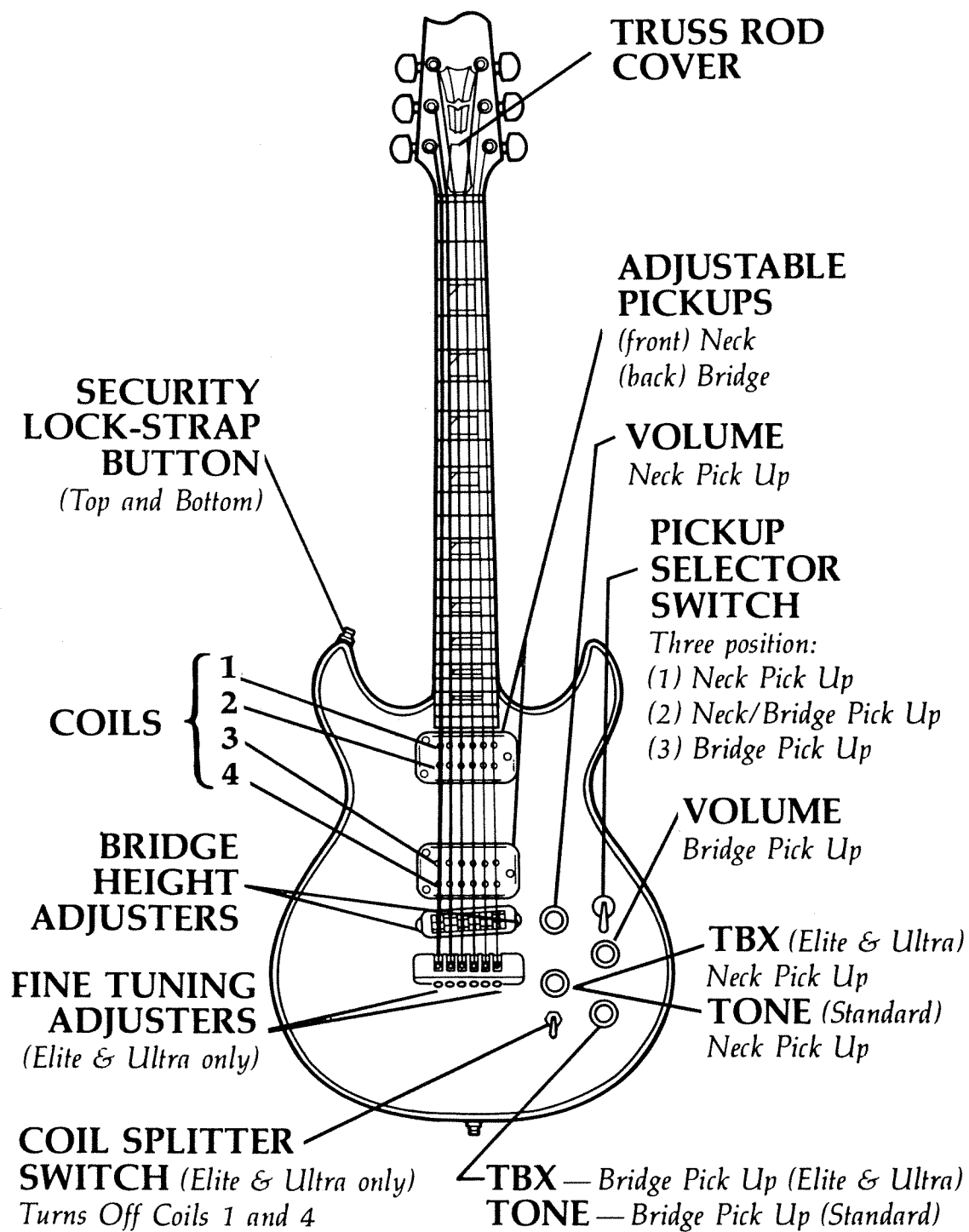
*Your playing pleasure will be enhanced if you become thoroughly acquainted with all the features of your instrument. We urge you to take the necessary time to familiarize yourself with the many new features and electronics described in this manual, and then begin to enjoy the ultimate in playing comfort and satisfaction.*

The Fender logo, featuring the word "Fender" in a stylized, handwritten script font. A registered trademark symbol (®) is located at the top right of the logo.

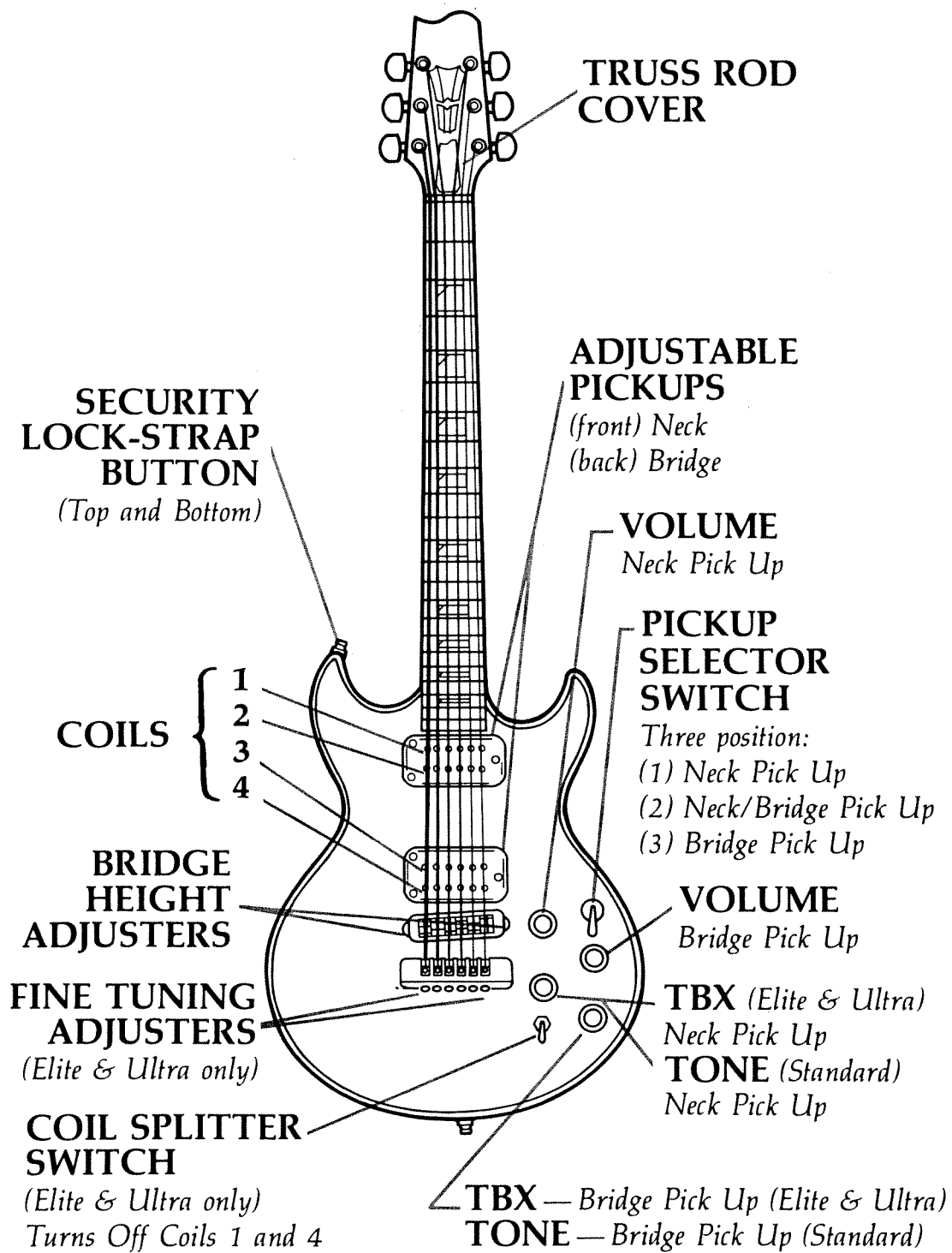
## D'Aquisto Features



# Esprit Features



## Flame Features



## VOLUME CONTROLS

The Volume Control allows you to regulate the overall output of the instrument. On dual pickup models, separate Volume Controls for each pickup allow you to mix the sound from the individual pickups when they are used together.

## TONE CONTROLS

The Tone Control allows you to modify the instruments tonal response. On the Esprit and Flame, Ultra and Elite models, a unique tone circuit features Fender's new TBX™ Tone Control (Pat. Pending).

The TBX™ Control has a center detent position that gives you the standard Fender sound. By rotating the knob clockwise, you will notice increased presence and brightness. Rotating the control from the detent position, counterclockwise, it works like a normal tone control.

By experimenting with this control you will find your new Fender Master Series guitar can cover a wide range of possibilities; from the mellowest jazz sounds to the brightest country licks—from the funkier R&B rhythms to the hottest rock leads.

## ADJUSTABLE PICKUPS

The Pickups on your Master Series guitar are fully adjustable for height and matched string volume. Tilt and height adjustments are made by turning the three Pickup Adjustment Screws located at either end of the pickup. To raise a pickup, turn the adjustment

screws counterclockwise; to lower, turn them clockwise. The tilt adjustment keeps the pickups parallel to the strings when adjusting for height or maximum tonality and output.

A separate coil-splitter switch permits the pickups (on the Flame and Esprit models) to be used as humbuckers or switched for brilliant, single-coil "Fender type" sound. *Note:* Does not apply to D'Aquisto Ultra. A special pickguard mounted pickup assembly is available for the D'Aquisto Ultra model.

## ADJUSTABLE BRIDGES

The Bridges on the D'Aquisto models are carved from solid rosewood or ebony, while the Esprit and Flame models feature a completely new, three-axis adjustable bridge developed by Fender for the Master Series guitars.

Each string on the three-axis bridge is individually adjustable for side-to-side spacing. Roller-type string saddles combine with adjustable tailpiece height and a unique angle-compensating string attachment to achieve superior playability at any desired tension setting.

The Bridges may be adjusted to the desired height by turning the two Height Adjustment Thumb Nuts on either end of the bridge. The Bridge also allows length adjustment of the strings to assure perfect intonation. For greater accuracy, this adjustment



should be made when strings are in new condition (see Adjustment Procedure for more detailed information.)

## ADJUSTABLE TAILPIECE

The Tailpiece on your Master Series guitar allows adjustment of the angle at which the strings cross the bridge. Lowering the tailpiece will result in a stiffer action, brighter tonality and increased volume while raising will create a more flexible feel to the strings, mellower tone and softer action. The tailpiece has been set to a median level at the factory.

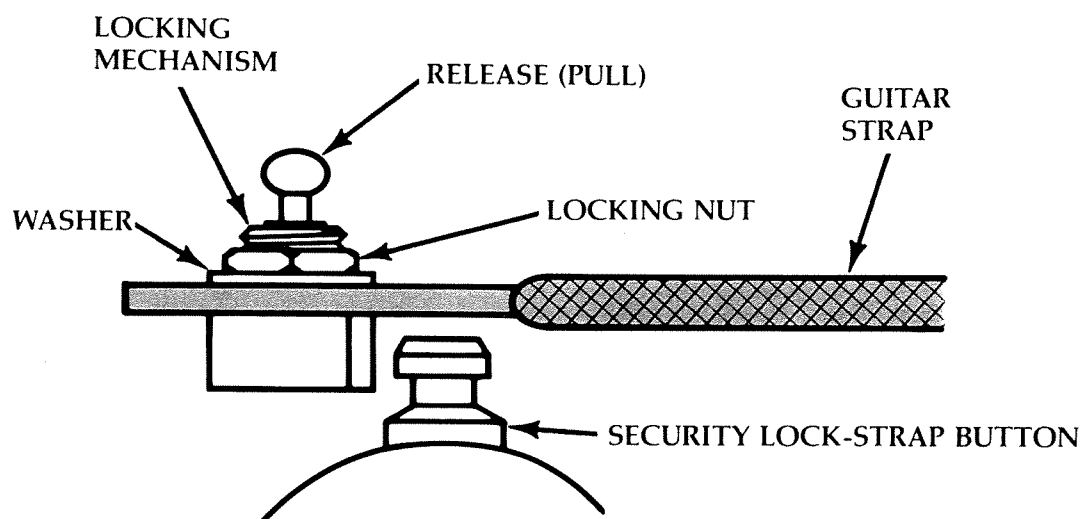
On the D'Aquisto models, to adjust the height of the ebony tailpiece, loosen the three screws and strap button screw on the bottom of the guitar and raise or lower to the desired height. This should be done without any tension on the strings.

The angle-compensating tailpiece on the Flame and Esprit models feature a top load stringing system. Height adjustment is achieved by first removing the strings and carefully sliding the tailpiece off the height adjusting studs. Turn the studs clockwise to lower and counterclockwise to raise to the desired height.

The Elite and Ultra models have a "micro" fine-tuning adjustment on the tailpiece. Before tuning the strings, set the fine tuners on the tailpiece at the midway point—this will provide the maximum range for more precise tuning.

## SECURITY LOCK-STRAP SYSTEM

Fender Master Series guitars are equipped with security lock-strap buttons. Attach the specially designed locks directly to your strap. Slip the locking mechanism over the strap button and pull it into position until it snap locks. Your strap is now secure on the instrument and cannot be removed unless you pull the lock release button.



## ADJUSTMENT PROCEDURE

Because of travel, climatic conditions and differences in playing styles, you might have need to adjust your Fender Master Series guitar. If it becomes necessary, the following procedure is the standard set at the factory.

To make these adjustments, you will need the following:

- 1— Truss Rod Adjustment  
    Socket Wrench (supplied)
- 1— #1 Phillips Head Screwdriver
- 1— Capo
- 1— Feeler gauge
- 1— 6" Mechanics ruler

### **1. Tuning**

Tune the instrument to standard pitch.

### **2. Adjust Neck Curvature**

Sight down the neck and check for irregularities. Install a capo at the first fret, depress the 6th string at the last fret with your left hand. Using a feeler gauge, check the gap between the bottom of the 6th string and the top of the 8th fret. The recommended string clearance should be no more than .018" nor less than .008". No other fret should show a gap greater than that measured at the 8th fret. No intermediate frets should be higher than the line running from the first to the last fret.

If an adjustment is necessary, remove the truss rod cover and insert the socket wrench (supplied) into the truss rod adjustment hole. Rotate it gently until you feel it engage the truss rod adjusting nut.

As you sight down the neck from the headstock, if it is too concave, turn the wrench clockwise. If it is too straight or convex, turn the wrench counterclockwise while regularly checking the gap with the feeler gauge.

If extreme resistance is felt while adjusting in either direction, **do not** continue adjusting. If the truss rod nut is loosened all the way and you still cannot get the proper gap take the instrument to the nearest authorized Fender dealer or service center for inspection.

### 3. Set Bridge Height

The recommended string clearance at the twelfth fret should be:

Strings 1-4  $5/64'' \pm 1/64''$

Strings 5-6  $3/32'' \pm 1/64''$

Repeat the same check using the first string.

**Periodically re-check tuning for standard pitch.**

### 4. Set Pickup Height

Depress all strings at the last fret. Check the distance from the bottom of the first and sixth strings to the top of the pole piece. The measurement should be as follows:

1st String —  $1/16''$

6th String —  $3/32''$

### 5. Set Nut Height

The string clearance at the first fret should be as follows:

Strings 1-3 .018"

Strings 4-6 .020"

Strings should appear to be spaced equally from center to center. The outside two strings should appear to be equally spaced from the edge of the neck approximately  $\frac{3}{32}$ " from the outer edge.

## **6. Check for fret rattle**

With the instrument plugged into your amplifier and the pickup selector switch in the neck position, pick in the area between the neck and bridge pickups. Play each fret position, holding the pick parallel to the plane of the body, to determine that the strings do not buzz or rattle against successively higher frets.

Bend the first and second strings at the 12th, 15th and 17th frets up one whole tone in pitch. The notes should ring true without choking off.

Due to differences in playing styles and picking techniques, action settings that produce no string rattle for one player may rattle when another player plays the instrument. If you have followed all the adjustment procedures listed and set the string action at the top end of the string height, but are still experiencing fret rattle take the instrument to an authorized Fender dealer or qualified service center.

## **7. Adjust Intonation (Recheck tuning)**

With an electronic tuner, the pickup selector switch in the neck pickup position and the tone

control rolled off to '0', check the intonation of each string by playing the 12th fret harmonic and comparing it to the actual fretted note. The pitch should be the same  $\pm 1$  cent.

## CARE OF YOUR FENDER GUITAR

Your new Fender Master Series guitar is precision made to give you many years of satisfaction. A few simple maintenance procedures will help you keep your instrument playing like new.

After you have finished playing, thoroughly wipe the entire guitar, including the strings, with a clean, soft cloth. A regular routine for cleaning your instrument with Fender Polish is recommended.

Avoid exposing the guitar to any chemical or substance that might mar the finish, as well as, to direct sunlight or other sources of excessive heat, humidity or shock.

You **must** use extreme caution when a thoroughly chilled instrument is to be played. It is important to avoid sudden changes in temperature since this may cause checking to the finish. While this condition does not affect the tone, it does mar the finish.

Let the instrument warm up safely in its own case. Then, open the case gradually allowing warm air to enter slowly. After the instrument is removed, leave the case open so it, too, can warm up thoroughly. If exposure to temperature extremes is unavoidable, as during shipping, string tension should be reduced to avoid possible damage.

Change your strings often. Dirty, corroded or worn strings cause loss of sustain, loss of treble frequencies and faulty intonation.

If your guitar needs repair, refer all such work to your Authorized Fender Dealer whose trained personnel and complete service facility assure your satisfaction.

Note pertinent facts below as a record in case of theft, loss or resale.

Model \_\_\_\_\_ Serial No. \_\_\_\_\_

Date Purchased \_\_\_\_\_ Price \_\_\_\_\_

Dealer \_\_\_\_\_

**Fender**  
Musical  
Instruments

Printed in U.S.A.

024660