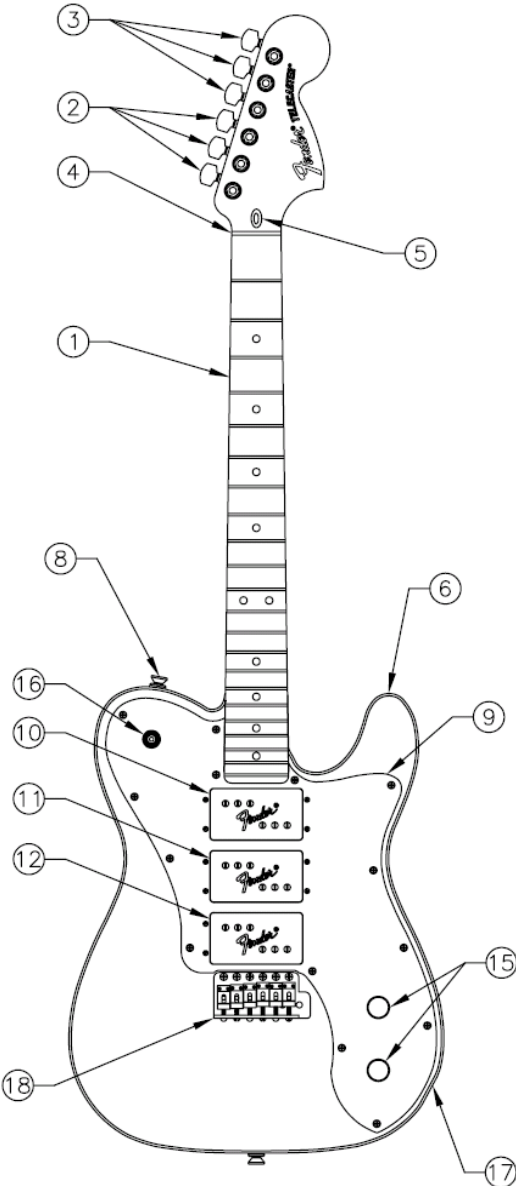


J5 Triple Tele Deluxe

Rosewood- m/n 0130050306



<u>Loc #</u>	<u>Description</u>	<u>Part Number</u>
1	Neck (rosewood)	007-3006-000
1a	Standard Fret Wire (24)	099-1998-000
2	Ping Locking Tuners (ea)	007-3114-000
2a*	Washers (6)	005-3106-049
2b*	Tuner Bushings (ea)	005-3107-000
3	Ping Locking Tuners (ea)	007-3115-000
3a*	Washers (6)	005-3106-049
3b*	Tuner Bushings (ea)	005-3107-000
4	Bone Nut (blank) (2)	099-4920-000
5	American Truss Rod Nut	099-4943-000
6	Body (Black)	007-3031-506
7	Neck Plate (w/ mtg. screws)	099-1447-100
7a	Neck Mtg. Screws (12)	001-5636-049
8	Strap Buttons (2)	099-4915-000
9	Pickguard	007-3032-000
9a	Pickguard Screws (24)	099-4923-000
10-11	“Enforcer” Wide Range Pickup	007-3041-000
12	“Enforcer” Bridge Pickup	007-3042-000
10-12a*	Pickup mtg. screws (12)	005-0166-049
10-12b*	Pickup mtg. springs (12)	005-0167-049
13*	500K Solid Shaft Pot	099-0835-000
14	.022uf Capacitors (12)	002-4832-049
15	Chrome Knobs (ea)	005-8386-000
16	3 Way Toggle Switch (w/ tip)	006-8469-000

* = Not pictured in diagram

Bold = Item is available for warranty replacement only

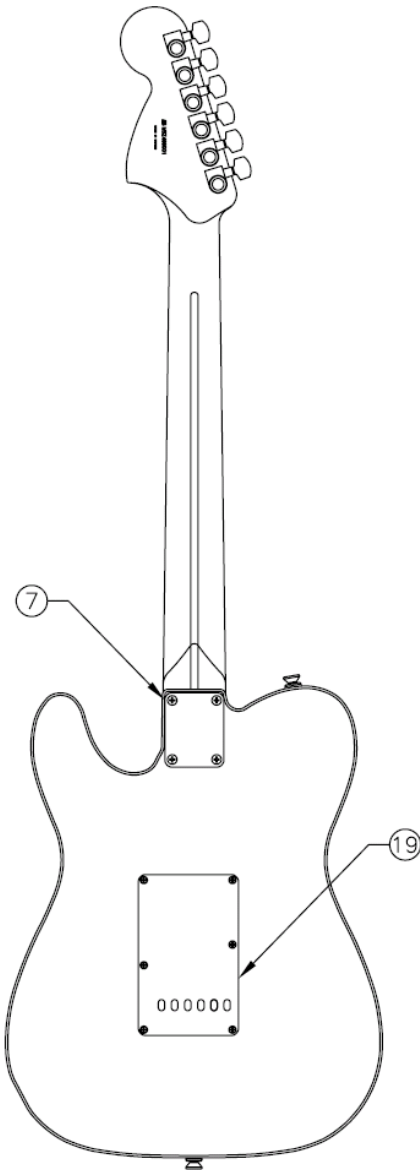
J5 Triple Tele Deluxe

Rosewood- m/n 0130050306

<u>Loc #</u>	<u>Description</u>	<u>Part Number</u>
17	Output Jack (2 pack)	004-7329-049
17a	Jack Nut (12)	001-6352-049
17b	Lock Washer (12)	001-6436-049
17c	Jack Plate (chrome)	099-1941-000
18	Bridge Assembly	005-4619-000
18a*	Bridge Mtg. Screws (ea)	001-6170-049
18b*	Tremolo Arm	005-4620-000
18c*	Tremolo claw	005-0918-000
18d*	Tremolo claw mtg. screws (12)	001-5636-049
18e*	Tremolo Springs (5)	003-1643-049
19	Backplate	099-1322-000
20*	Truss Rod Adjustment Wrench (12)	002-8311-049
21*	Saddle Height Adjust Wrench (12)	001-8531-049
22*	Deluxe Gig Bag	099-1512-006

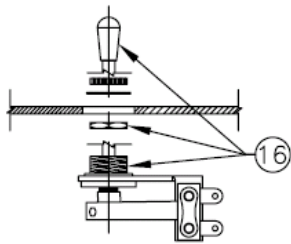
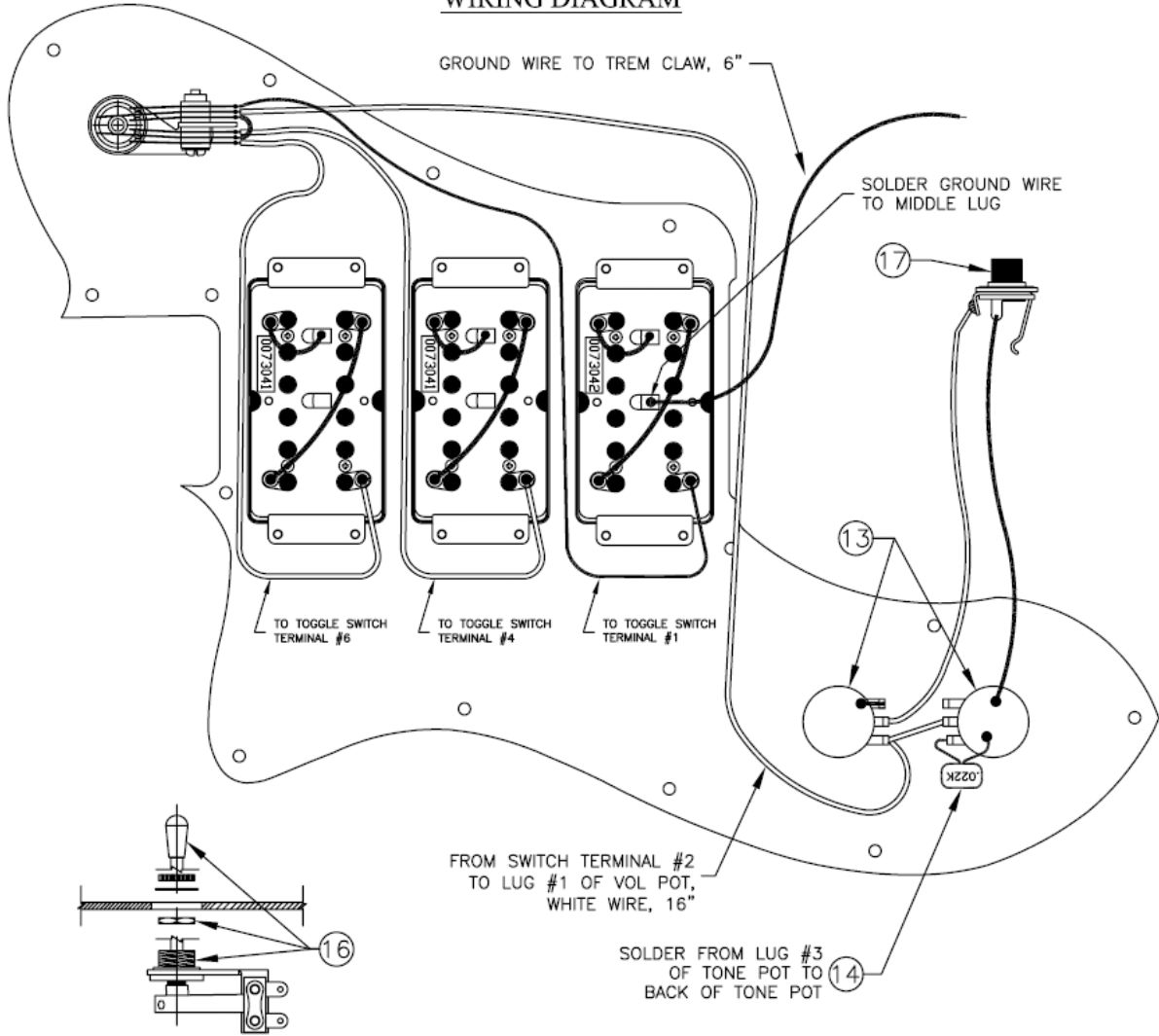
* = Not pictured in diagram

Bold = Item is available for warranty replacement only

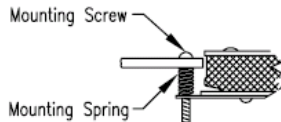


Wiring Diagram

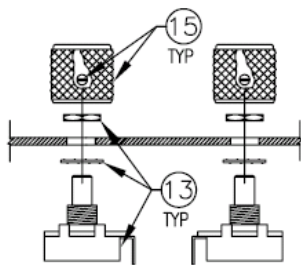
WIRING DIAGRAM



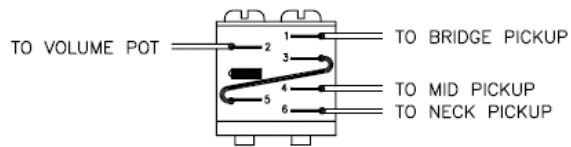
SWITCH ASSEMBLY DETAIL



PICKUP MOUNTING DETAIL



CONTROL DETAIL

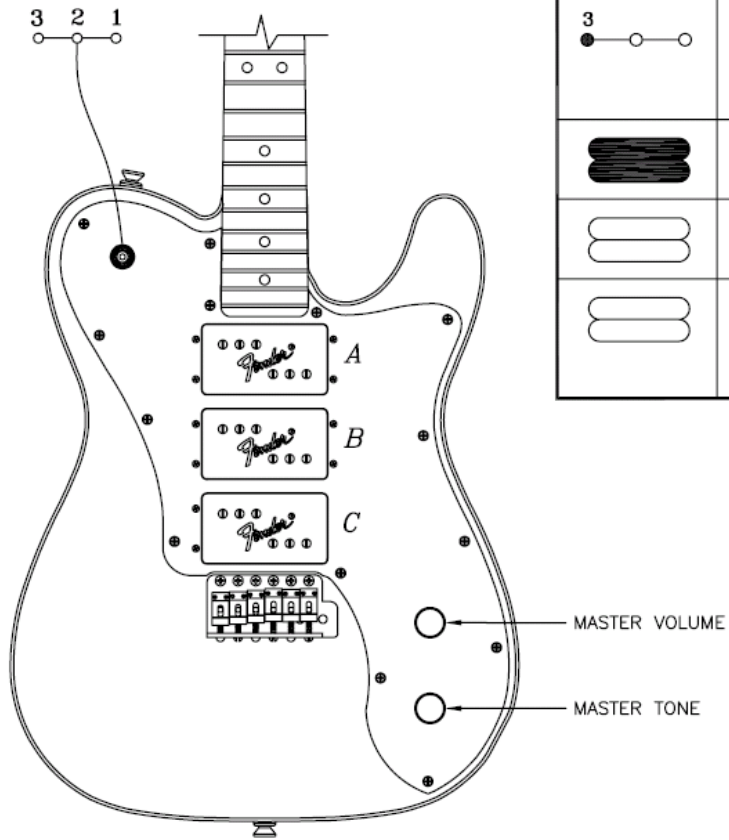


SWITCH WIRING DIAGRAM



Fig. 2 of 4

Control Function



3 WAY SW POSITIONS			
3	2	1	POSITION
			POSITION
			← NECK (A)
			← MID (B)
			← MID (B)

	PICKUP IS ON
	PICKUP IS OFF
<i>A</i>	PICKUP (NECK)
<i>B</i>	PICKUP (MID)
<i>C</i>	PICKUP (BRIDGE)